

queemija' lenguentsumi ruculachi quiica pallu

2

queemija' lenguentsumi ruculachi quiica pallu

2



C CENTRO DE SOLIDARIDAD
ANDINA

MINISTERIO DE EDUCACION Y CULTURA

PONTIFICIA UNIVERSIDAD CATOLICA DEL ECUADOR

ILL - CIEI

PRIMERA EDICION EXPERIMENTAL
QUITO - 1983

queemija' lenguentsumi ruculachi quiica pallu



C CENTRO DE SOLIDARIDAD
ANDINA

2

MINISTERIO DE EDUCACION Y CULTURA

PONTIFICIA UNIVERSIDAD CATOLICA DEL ECUADOR

ILL - CIEI

PRIMERA EDICION EXPERIMENTAL
QUITO - 1983

QUIICA QUE'FAAHUAAMULA:

Manuel Modesto Añapa Chapiro
José Chapiro Añapa

MANGUERA:

Avelino Joaquín Tapuyo Añapa
Adolfo Chapiro Añapa
Atanacio Añapa Añapa
Elias De la Cruz Pianchiche
Edilfo Diaz Cruz
Francisco Rosendo Añapa Añapa
Felix Añapa Quiñonez
Fernando López Melchor
Germán Añapa San Nicolás
Hernán Tapuyo Nazareno
José Domingo Acero Pichota
José Doctor Añapa Cimarrón
José Camacho Añapa Quiñonez
José Cristóbal Pianchiche Añapa
Jorge Domingo Añapa San Nicolás
Jacinto Añapa Pianchiche
Luciano Añapa De la Cruz
Lorenzo Añapa Tapuyo
Manuel De la Cruz San Nicolás
Mario San Nicolás Tapuyo
Nery Orlando Largo Cimarrón
Pedro Añapa Pianchiche
Pedro Herminio De la Cruz Tapuyo
Pedro Ortiz Larzon
Romilio Ortiz Pichota
Ricardo Torres De la Cruz
Santiago Añapa Pianchiche

TITALABA QUERE'QUEMU:

José Caicedo Añapa

QUIVE'MU:

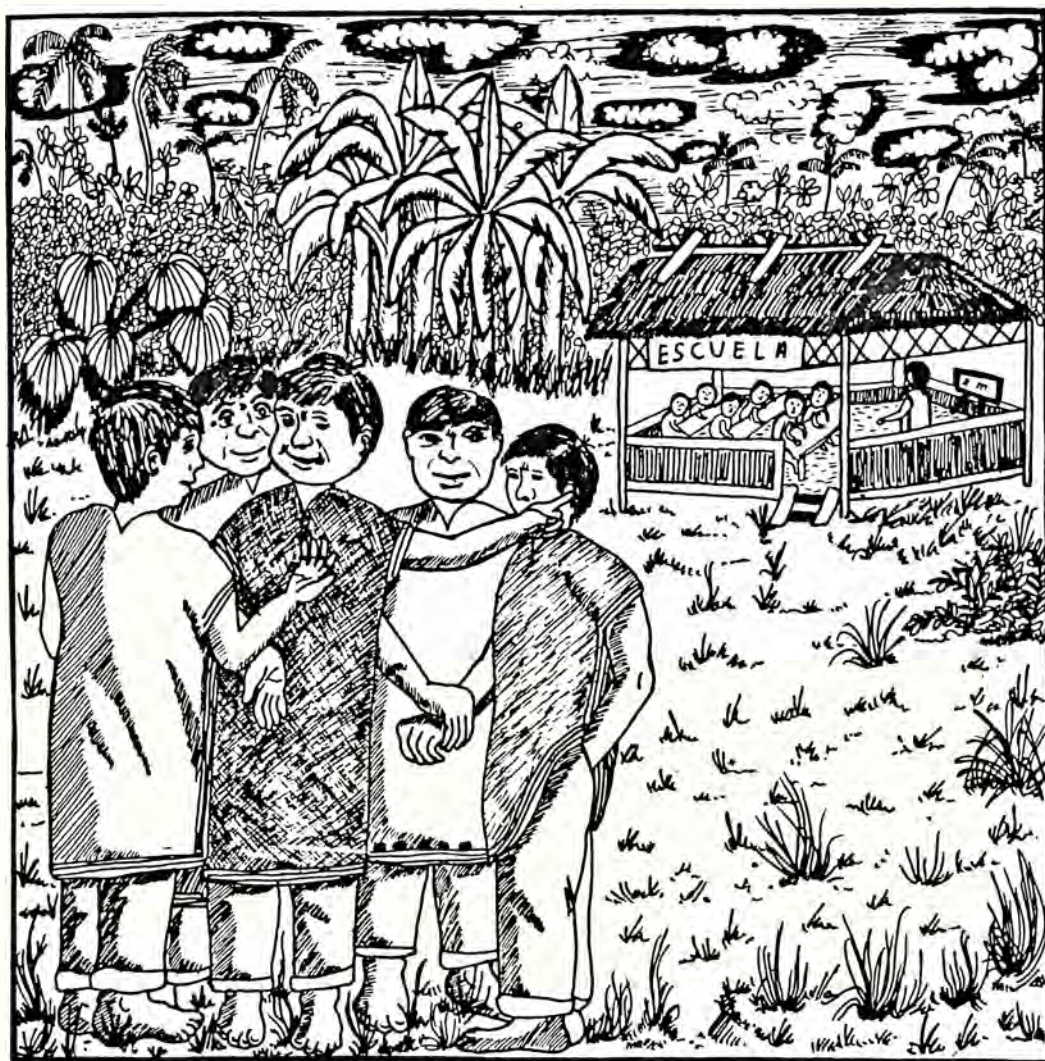
Luis Montaluisa

PIIQUE' FAAHUAAMU:

Ramón Astondoa

ma quiica

— 1 —



laaba quiica mijaña uranumeete.

1- laaba quiica mijaña uranuumeete.

laaba

laa ba

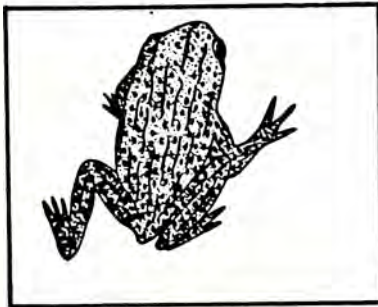
laa

l aa

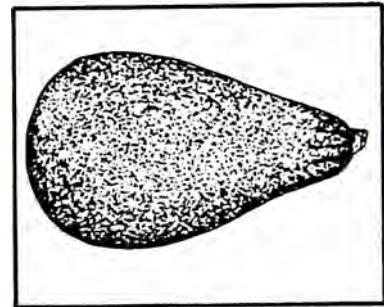
l

laaba quiica mijaña uranuumeete.

2 - cataadequeeshu pilla catamiya chi'cade.



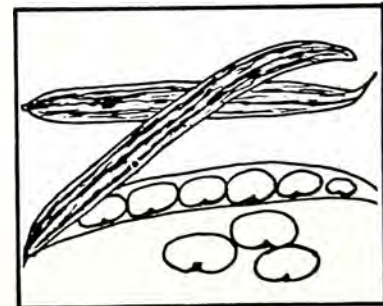
ale



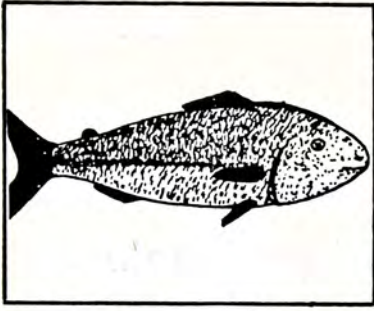
alu



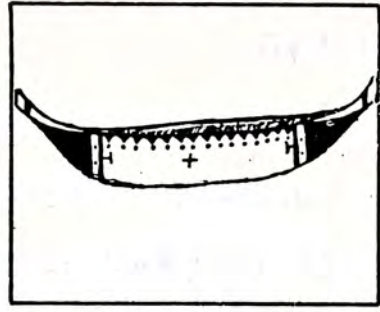
ela



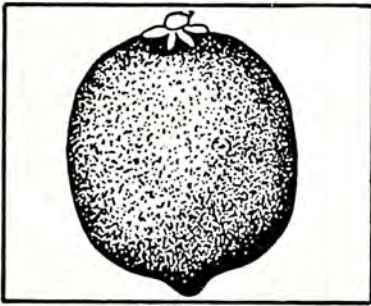
mulu



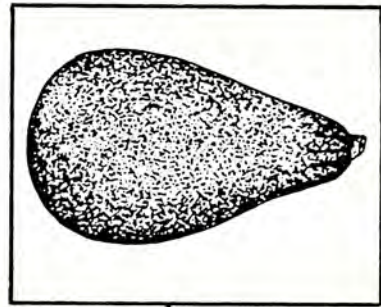
lubi



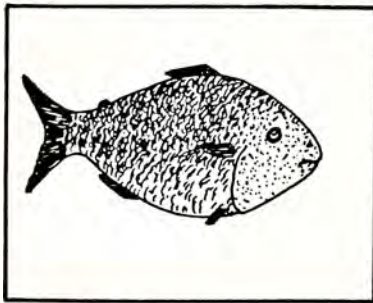
cule



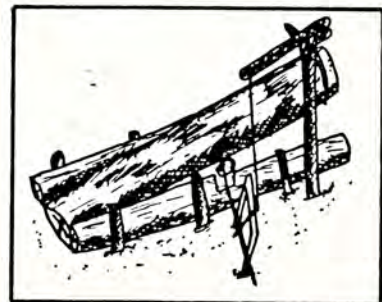
lemu



alu



tselu



ila

3 - entsa pillalanu chi'cade cataadequeeshu juntsa pilla
catamiya.

tsaave uhuain laaba quiica aamija' chuñaa urave, nejtaa
lala naa uranuba challa naa dejaa tsaane juushu juntsaa,
lala chachilla cayu bene yuj lastema' junu dejuyu.

naadejunga mantsa yumaa rucula quiica miidetushuca,
tsaamicaren naa ti atique'ba tara tara deive yumaa
chumu rucula, mantsa aseetan quinuuba majutyudeeyu
umaya laaba entsa ajquesha tiiñuba mija' jisai laachi
meneste iinuu junbalaa.

lala laatenen pudejtui'taa, veela dejataa, ñulla tsanguidei
tinbalaa tsanguinuj deehua, lala chachilla tiba tsangu
cuti'nutsumi nejtaa, lala' chachi jutyu lachee uuden inu
dejuhua, asu ñuiba pensanguidei.

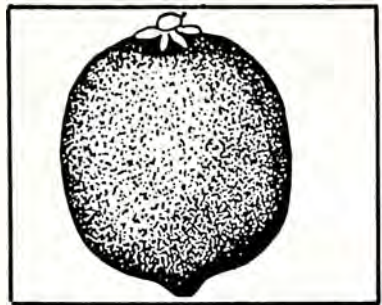
4-

l l l

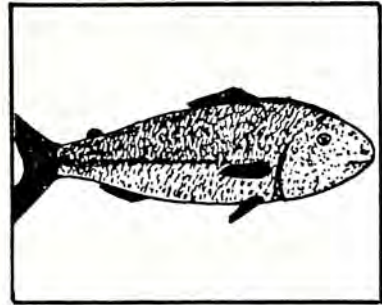
l l

l

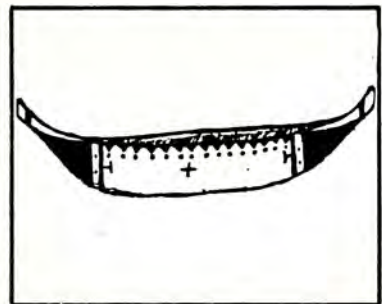
5 - nubatalaa cataadequeeshu pilla faatañuba
mangaapude.



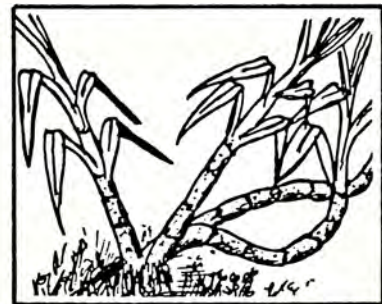
_emu



_ubi



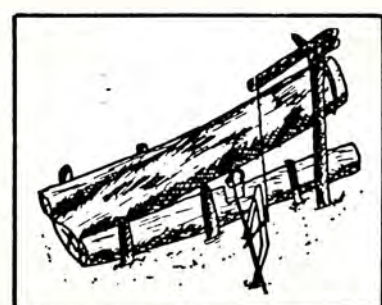
cu_e



e_a



a_e



i_a

6 - laaba quiica mijaña uranuumeete.

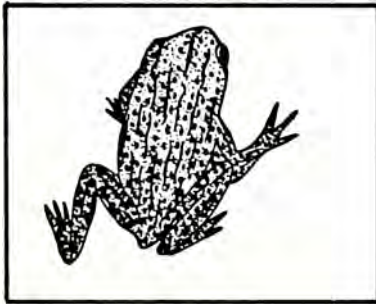
laaba

laa ba

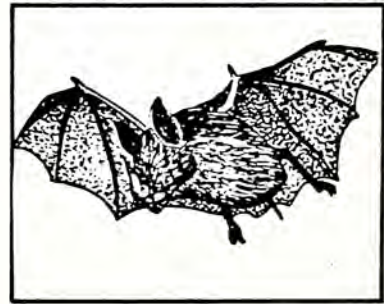
aa a

laaba quiica mijaña uranuumeete.

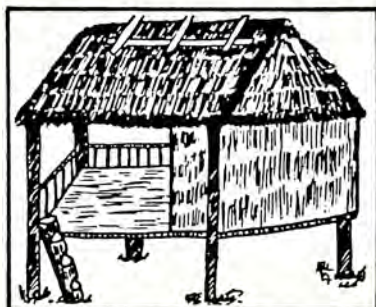
7 - cataadequeeshu pilla catamiya chi'cade.



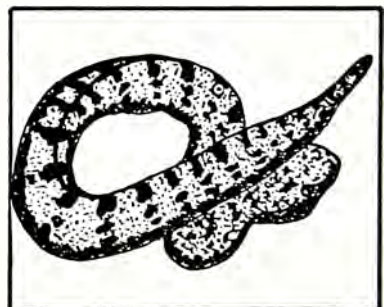
ale



aashupa



ya



maape

8 - entsa pillalanu chi'cade cataadequeeshu juntsa pilla
catamiya.

quiica paatenu patishu juntsaa yuj urave pensanguĩnu, urave
lala challa naa dejaa quiica aamijtulaya tiquinchadeehuashu,
uhuain tsaave matyu muba quiica aamija'chunaaba man-
baate jayu chi'ta chi'tadive lushi paate, naaquetaa naa
lala chunu , pudejtuba cayu aapebulushaa tsaa lushi
menestenguinshaba ca-cayu enguren chunu pudejtumiba lala
pudecayamunga.

matyu tsai'jitaa cha'ten dinujtaa tsaasha jiqueenujuve,
entsa lushi paate'mityaave lala chachilla jayu quiica
paatenu punbele'mitya queraa ma queraa juqueyaami,
tsaanu mijandendyuñu juqueyan tsaama juqueyaave, nenña
quiicanaa naa muba mijandendyaa timu deenga tsamantsa
uranuba.

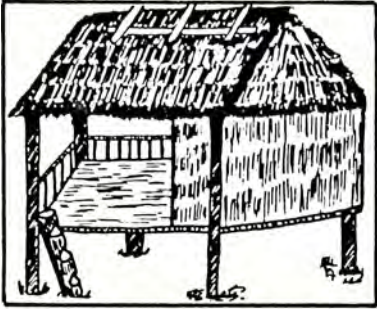
9 - entsa pillalanu lende.

lala lalaa lala lala lalaa lalaa lala lalaa
lalaa lala lala lalaa lala lalaa lalaa lalaa

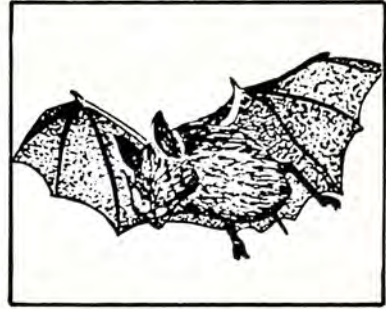
10 - tsangue manbiiquide entsa pillalanu.

lala lala
lalaa lalaa

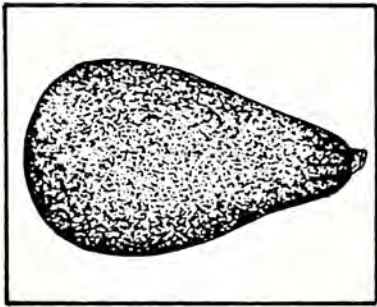
11 - nubatalaa cataadequeeshu pilla faatañuba
mangaapude.



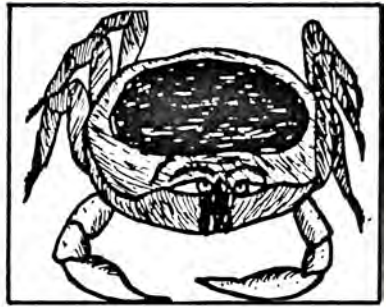
y_



_ _ shupa



_ lu



_ _ nelu

12 - mashturu panbala piiquide.

13 - laaba quiica mijaña uranuumeete.

uranuumeete

u ra nuu mee te

mee te

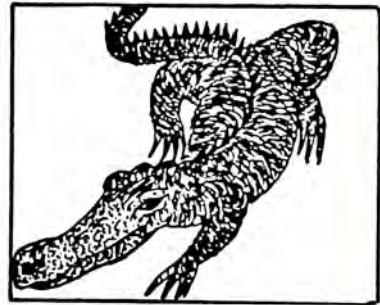
ee e

laaba quiica mijaña uranuumeete.

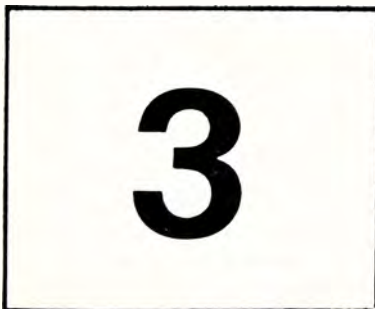
14 - cataadequeeshu pilla catamiya chi'cade.



ela



eenbu



pema



neetyushu

15 – entsa pillalanu chi'cade cataadequeeshu juntsa pilla
catamiya.

nejuqueyaaqueeve lala mantsa chachilla quiica paatetalaya
nantsa rucula tsandimudeeve, naa quena quiica vichaanga
i tsaren taahuasha quentsumiba ibain tsaren lushi
cantsumiba, ibain tsaren panda bain fintsumiba, tsaave naa
quiica mi'bain tsaren juuve timudee quiica paatenu mantsa
tsandimudeeve lala mantsa entsa paatetala aseeta jutyu'
mitya detiyu tsatsandila.

ruculai, nenñaa tsandinaanga tsamantsa quiicaya ñu'
cuepunu uuquera lahuaamunuba nejta tsaave tenguen,
asu lala naa dejaa mantsa ti ati que'ba taraqueemuu
saaca nejtaa tsaiqueyan quiica mijtu'mitya mantsa banvillai'
queraque, panu mijtu tsaquiren.

16 – entsa pillalanu lende.

lala ela ale leela ale lelee

lela lala leela leela lelee

17 – tsangue manbiiquide entsa pillalanu.

ale ale

ela ela

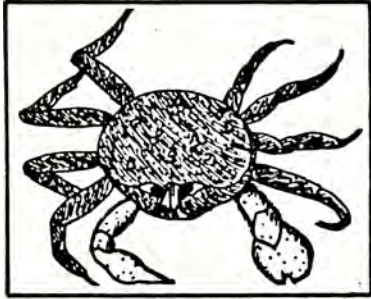
leela leela

lelee lelee

alee

lela

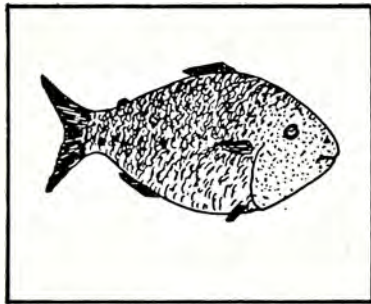
18 - nubatalaa cataadequeeshu pilla faatañuba
mangaapude.



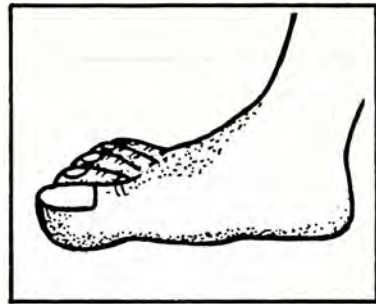
n_lu



__nbu



ts_lu



n__pa

19 - mashturu panbala piiquide.

20 - laaba quiica mijañaa uranuumeete

quiica mijañaa

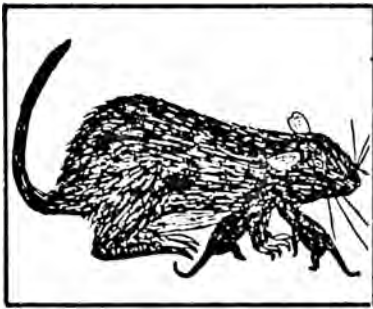
quii ca mi ja ñaa

quii mi

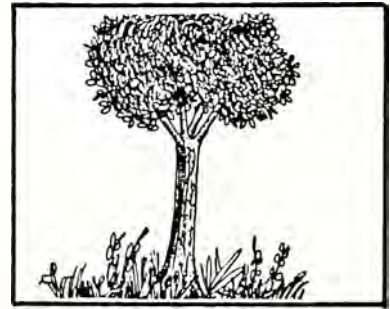
ii i

laaba quiica mijañaa uranuumeete.

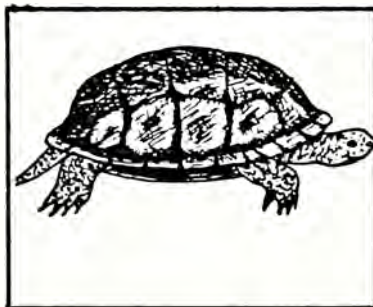
21 - cataadequeeshu pilla catamiya chi'cade.



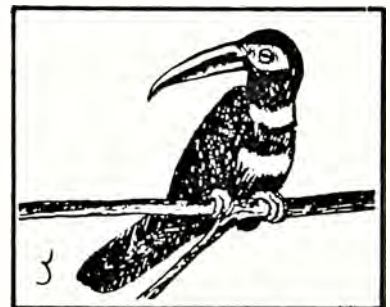
iyu



piisachi



pichilli



piichi

22 - entsa pillalanu chi'cade cataadequeeshu juntsa pilla
catamiya.

lala chachilla quiica aamijanunaba lushi paate' mityan
tsaaqueeve quiica paatenu balejtuñu nequeran tsaaqueemi,
tsaimin naa pebulu tala chudi' mijanu queñu bain nucaa
chuntsana paandela dechutyu tsenbala mantsa quiica
umaa viinduren supu ca'queraque, mantsa dilu' queraque.
tsamantsa quiicaya balengusasve naa uyalala bain quiica
aamijatu tsadeive chunbullanu chumujchin lushi cayaa
tiyaila, nejtaa laabain juntsainu tsumi pa'ban dimudeesu
pareju mishuchi.

23 - entsa pillalanu lende.

ila	iilaa	ila	iila	iila	ila
iila	ila	iilaa	ila	iila	

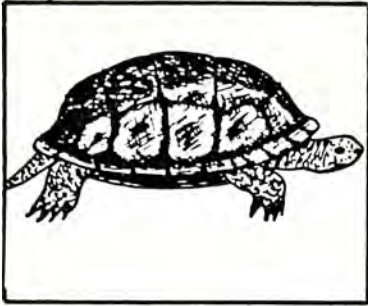
24 - tsangue manbiiquide entsa pillalanu

ila

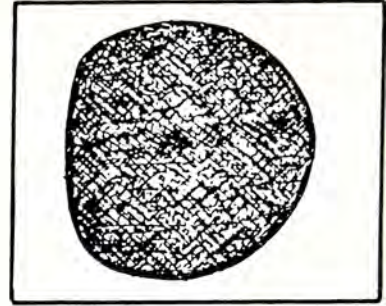
iila

iilaa

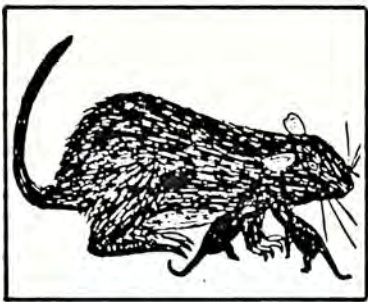
25 - nubatalaa cataadequeeshu pilla faatañuba
mangaapude.



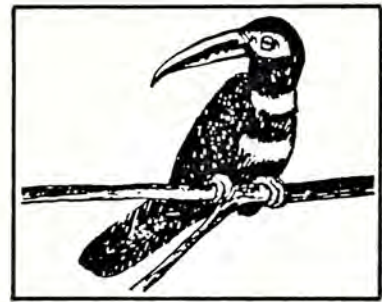
p_ch_ll_



m__qui



_yu



p__ch_

26 - mashturu panbala piiquide.

27 - laaba quiica mijaña uranuumeete.

uranuumeete

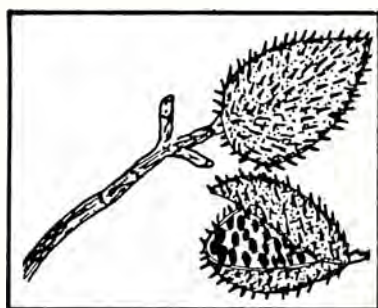
u ra nuu mee te

u nuu

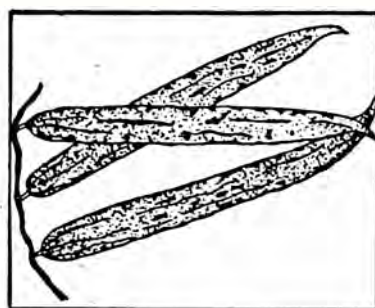
u uu

laaba quiica mijaña uranuumeete

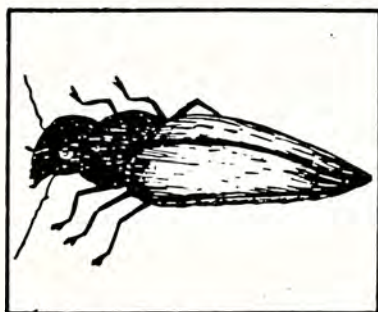
28 - cataadequeeshu pilla catamiya chi'cade.



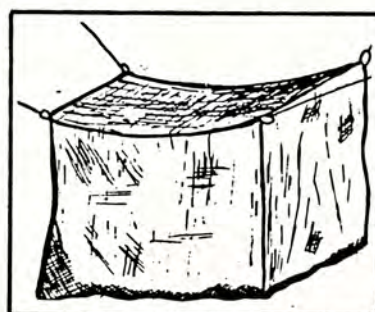
mu



muupapa



mulucu



tuutu

29 - entsa pillalanu chi'cade cataadequeeshu juntsa pilla
catamiya.

lala chachilla muuba quiica aamija' cha'tiya' pequeyan
jutyuve jayuuba muba tsaashaa tiba pensa tanatyulaate,
mallee tsainu tsumi rucuu paate quiica queemula bain, naa
ñuibain tsainu tsumi ñenña caillaa tsadeisa tenna
pensan guenaanga.

matyu tsaindun mijamiya chumujchi lushi caquenu tsumiba
tsaimee naa mutuu candenbalaa canutsumi, asu tsaatyuca
pensanguẽnu ñuichiba entsa ajqueshaa mutuu tandene
tinu quentsumi.

30 - entsa pillalanu lende.

ula uula uula ula uula ula
ula ula uula ula uula

31 - tsangue manbiiquide entsa pillalanu

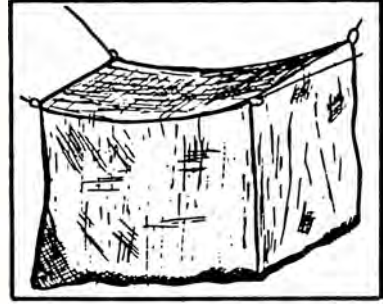
ula

uula

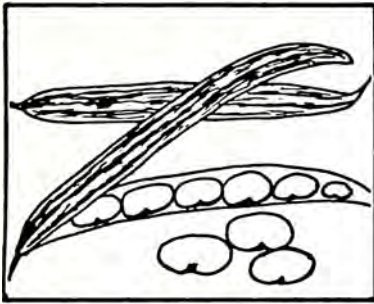
32 - nubatalaa cataadequeeshu pilla faatañuba
mangaapude.



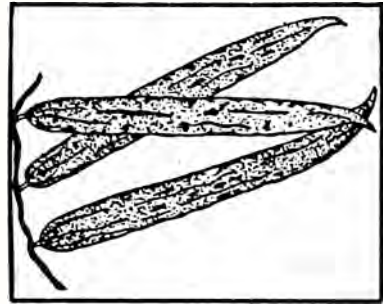
l _ shi



t _ _ tu



m _ l _



m _ _ papa

33 - mashturu panbala piiquide.

34 - laaba quiica mijaña uranuumeete.

uranuumeete

u ra nuu mee te

nuu

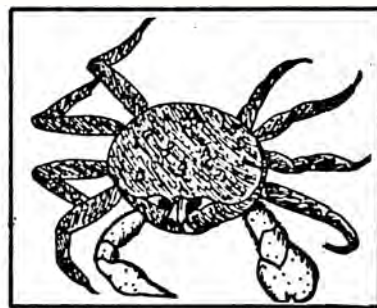
n

laaba quiica mijaña uranuumeete.

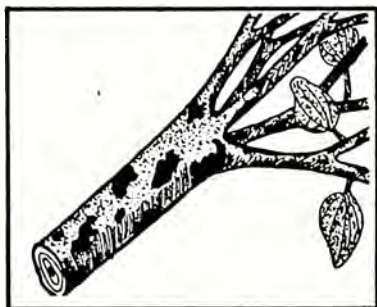
35 - cataadequeeshu pilla catamiya chi'cade.



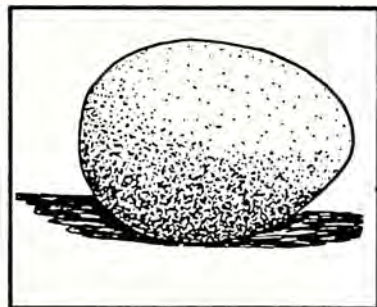
tindi



nelu



nana



napipu

36 - entsa pillalanu chi'cade cataadequeeshu juntsa pilla
catamiya.

tsaasai matyu quiica aamijanudetsu umaya lala' caillanaa
quiica pudaa unbeena supuna'malanu. challa cayu uuv
natuutyuca, mantsa caletala quiica queenu ya jumi, naa
ruculachibain tsana tuutyuca ruculanu quee huaamu
mashturu bain tsamantsa uu aamija' chunnave. yumala
tsajutyuhuaañu' mityaa matyu jumaa tinbunu chumula
challa chaicama chumulaya mantsa naa panuba
mijtudeeve naa tiba ai'nu pudejdetuyu.

37 - entsa pillalanu lende.

lalaa iila

nana lelee

lalaa u leela

nelunu iila

lalaa lennuu

lala lenla

38 - tsangue manbiiquide entsa pillalanu.

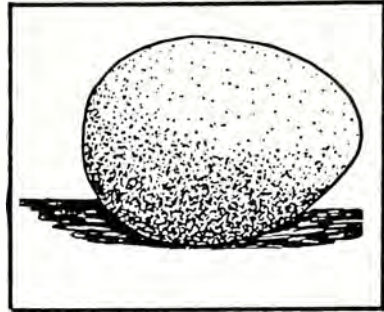
nana

nelu

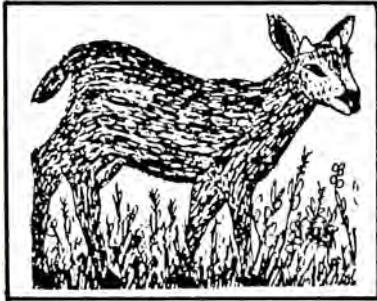
39 - nubatalaa cataadequeeshu pilla faatañuba
mangaapude.



_ a



_ apipu



ma_a



ti_di

40 - mashturu panbala piiquide.

pai quiica

— 2 —



caspele pure' chunamudeeyu

1 - caspele pure' chunamudeeyu.

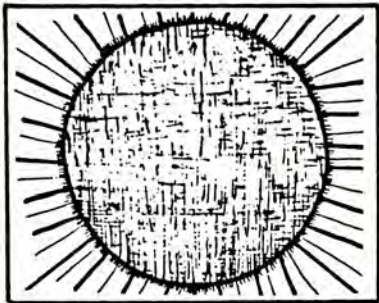
pure'

pu

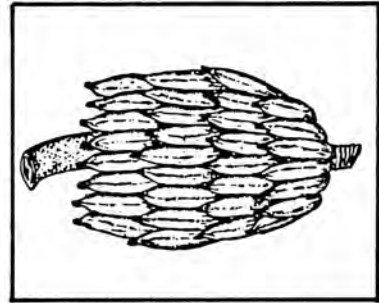
p

caspele pure' chunamudeeyu.

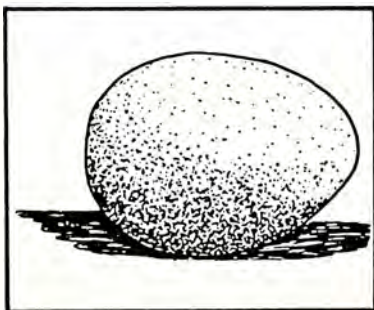
2 - queemijadeihuashu: pilla catamiya chi'cade.



pajta



panda



napipu



napu

3 - queemijadeihuashu pilla catamiya chi'cade.

caspee tinbunuya chachilla pure' chunamuhuadee timudeeve
tutsa'sha chunmalaya. yumaa tinbunuya chachilla tutsa'sha
tene chunamuhuade timudeeve. tutsa'sha tene chunanu
tinbunuya chachilla' pebuluren quitu tsaahuaa timudeeve.
yumaa tinbunu chumu ruculaya: aami rucu tene juuhuade
timudeeve, tsade'mityaa cume ishu juntsaya petyuhuadee
timudeeve. tsaa petyuhuaade'mitya aa pebulu que'
chumuhuaadeeve, ti'cuinda dequiñu miqueeve. entsa lala'
tyui aa apala' chuuma cuindave yumaa tinbunuya tutsa'sha
tene chunmala tsana chumuhuaadeeturen tsaimudee
depeyaitu jayu jui demandimula timudeeve.

4 - entsa pillalanu lende.

lala naananu mama.
lala naananu apa.
mama naanain apa.
apa uma pemi mama.
mana uma pemi mama.
mama mala eenu.
apanu mala eemi mama.
aa nelu pemu mama enu.
alu pema aanu mama.
ale aanu lumi apa.
mama enu lumi apa.

uma ajque' piique' shiicarendu naa i pillanuuñuba
piiquemijanu. puntu quetu naañaa junu shillii manbi
llainuuñuba. piiquemijanu. naañaa puntu quetu uma ajque',
piiquendu, naa intsai manbillanuuñuba piiquemijanu.

queetu piiquemijade.

laaba quiica vitaa, mijanun tsaaqueemeete viqueetyu jujuumi,
tsa'mitya mascu añuchi vidaa.

cayu veelaaba tsarenjun mashtuu dejushuba laaba
vintsumi. cayu yalanu pullai mijanaaba juqueyantsu.
juyallaaba tsarenjun vituya mijaqueeve tisuba laaba
vintsumi, naa mijanjutyu ju'ba rucu.

5 - shillimee yalluque piiquide.

pipenu _____

piipunu _____

napunu _____

nepanu _____

napipu _____

pinu _____

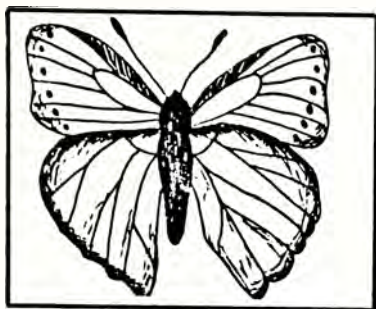
pilupi _____

neepa _____

napu _____

nape _____

6 - queemijadeihuashu: pilla mangaapude.



_unbu



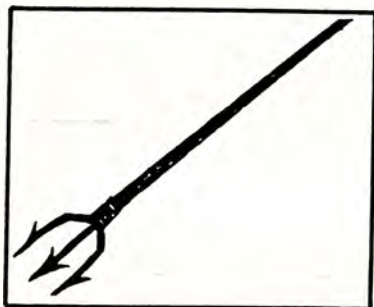
_u



_iñi



_una



_utyulla



_i_ayu

9 - caspele pure' chunamudeeyu.

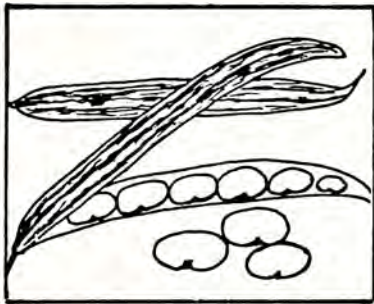
chunamudeeyu

mu

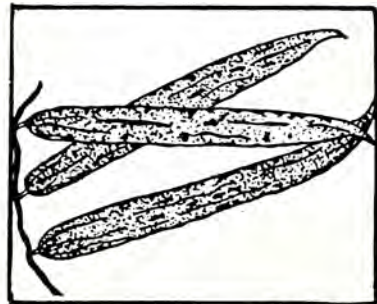
m

caspele pure' chunamudeeyu.

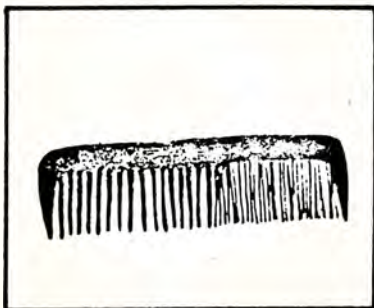
10 - queemijadeihuashu: pilla catamiya chi'cade.



mulu



muupapa



mupara



je'mucule

11 - queemijadeihuashu: pilla catamiya chi'cade.
 caspee tinbunuya chachilla pure' chunamuhuadee
 tutsa'sha chunmalaya. yumaa tinbunuya chachilla tutsa'sha
 tene chunamuhuade timudeeve. tutsa'sha tene chunanu
 tinbunuya chachilla' pebuluren; quitu tsaahuaa, tsaimin
 yumaa tinbunu chumu ruculaya: aami rucu tene juuhuadee
 timuhuadee tsade'mityaa cumechiya petyuhuaala.
 tsaa petyuhuaade'mitya aa pebulu que' chumuhuaadeeve,
 ti'cuinda dequeñu miqueeve. entsa lala' tyui aa apala
 chunmaa cuindave. tinbuya tutsa'sha tene chunmala
 tsana chumuhuaadeeturen tsaimudee, depeyatu jayu
 juidemandimula timudeeve.

12 - entsa pillalanu lende.

lala naamaa miinu mama.

apa lala' nana enu.

lala ela iinu uma apa.

lalaa uma miinu.

mama naanain apa.

lala mamanu pi eele.

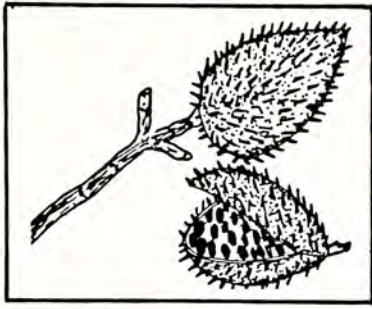
i pi eemi mama apanu.

lala ela iinu uma.

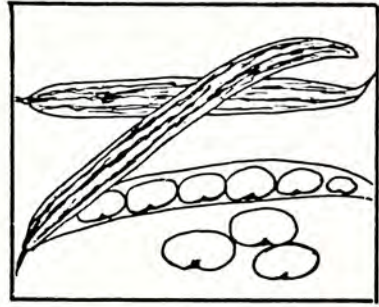
lamu naanain apa.

pi luu mama.

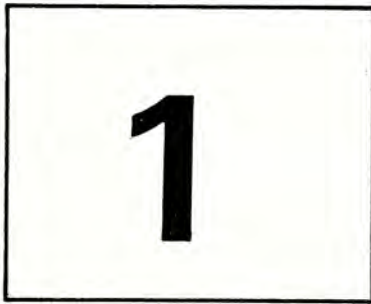
13 - queemijadeihuashu pilla mangaapude.



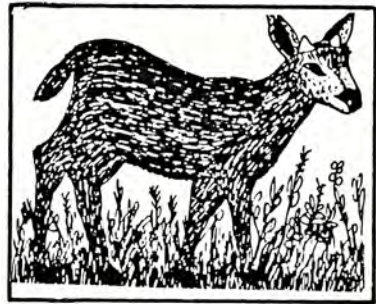
-u



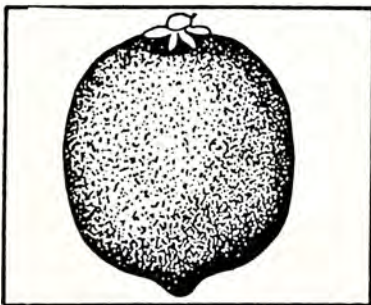
-ulu



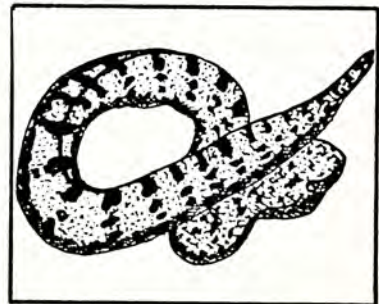
-ain



-ana



le_u



-aape

14 - shillime yalluque piiquide.

maape

mana

maanuu

miinu

pema

mala

mii

lulamu

15 - naaju pilla mangaapuñaa lenganuuñuba mangaapude.

lala naa_aa miinu _a_a

_pa _ata naananu _nu

lal_ ela iinu u_a apa

lala u_a _iinu

_a_a _aanain apa

lala _a_anu pi eela

i p_ ee_i apanu ma_a

l_la _i eela

lalan_ pi __mi mam_ ap_

apa pi aan_

lal_ e_a ii_u uma

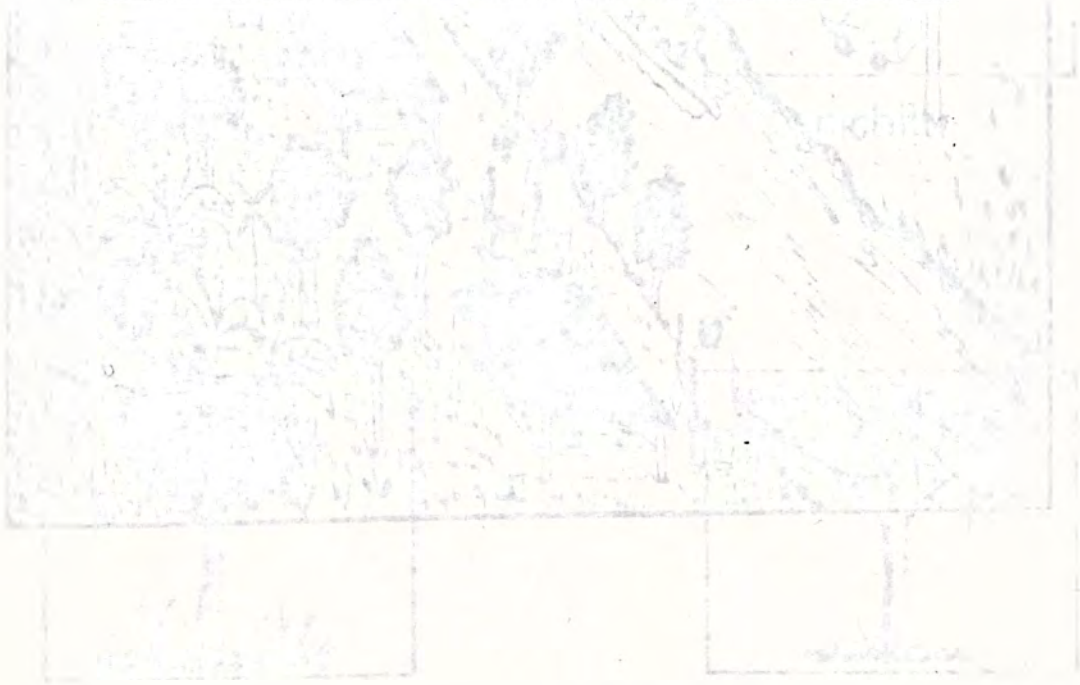
lamu naanain _pa

a_a pi _uu

pi luu m_ma

16 - mijacaañu pilla manbiiquide.

Blank lined writing area.



pen quiica

— 3 —



caspelelaya chachilla' tuteneju.

1 - caspelelaya chachilla' tuteneju.

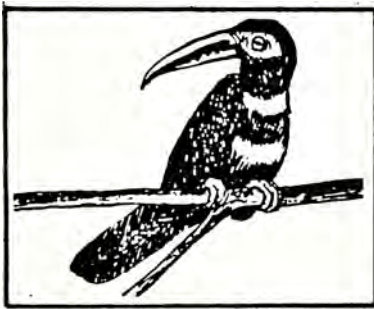
chachilla'

cha

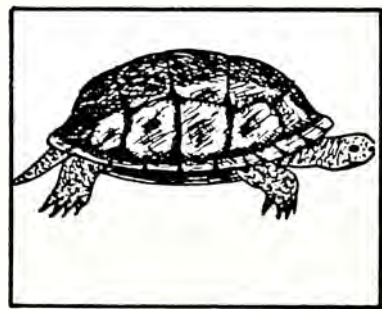
ch

caspelelaya chachilla' tuteneju.

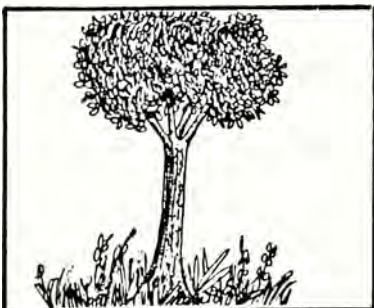
2 - cataadequeeshu pilla catamiya chi'cade.



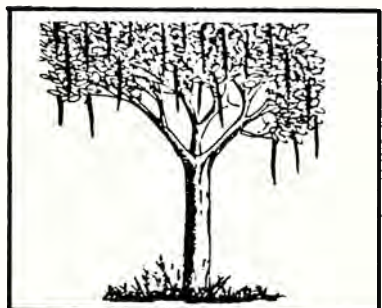
piichi



pichilli



piisachi



shiichi

3 - entsa pillalanu chi'cade cataadequeeshu juntsa pilla
catamiya.

uhuain matyu entsa tu juushu juntsanu, muba cayu fibala
vijaindetyun lala chachilla ajque' chumuhuadeeyu tsaanun
tsadenaa challaya matyu yalaa tsa tu duveñi chun
tsadenave, tsenbala lala chumulaa vee tusha vija'
chuntsadenayu: lala rucula tyee pasa indu deihua tsa
pasa intsula nucaa jindu nunbiee ji'chundu deihua entsa
ajqueshaa debuudi' taahuasha laatene quesai mantsa
lala cha'rucula debuudinu paatetala milla mijdetuyu naa
jutaa tsaañuba.

4 - entsa pillalanu lende.

umaa chamaa mama, lalanu umaa
apa panu chami.

lala enu chumula miinu, uma inaa
me' eenupala.

lemuchi aachi laachee.

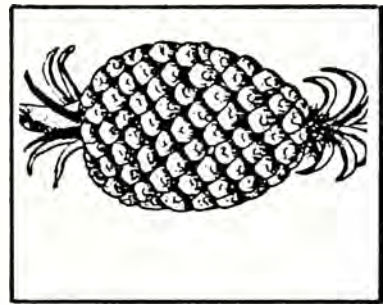
5 - tsangue manbiquide entsa pillalanu
chachi

muchi

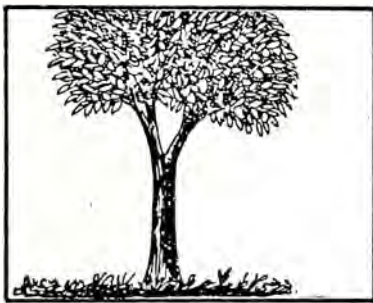
6 - nubatalaa cataadequeeshu pilla faatañuba
mangaapude.



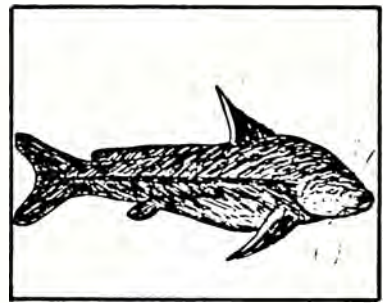
tin__i



__illa



__i



__iiqui

7 - naaju pillaa. faatañuba mangaapude.

_a_aa chu_ula e_u

a_a m_ma_u _e_a_u _iim_

l_l__ _i_nu p_nu lala _nu__um_m_

_emu aa__ichu_i i_ch_ a_m_

_nchi _a_paa n_a_ain _pa _m_a _an_a

ma_n_ p_m_ e_u

_aa _emu__inu p_n a_m_m_

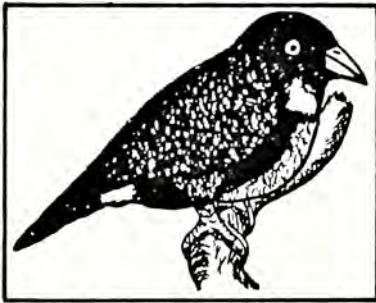
8 - mashturu panbala piiquide.

9 - caspelelaya chachilla' tuteneju.

chachilla'
cha chi lla'
lla'

chachilla'
caspelelaya chachilla' tuteneju.

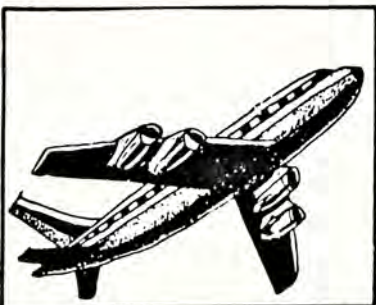
10 - cataadequeeshu pilla catamiya chi'cade.



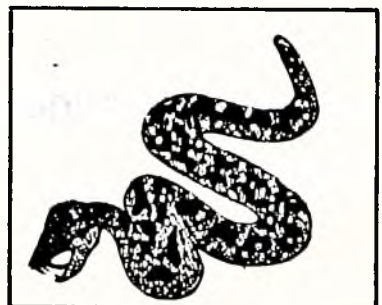
pa'lu



ja'chi



je'mucule



tsa'mi

11 - entsa pillalanu chi'cade cataadequeeshu juntsa pilla
catamiya.

uhuain caspelelaya cha'tutene juuhuaa timudeeve, yumaa
rucula cuinda que'qitu tsaaren nejtaa jumaa tinbunaa,
entsa tunu muba fibala vijai'nu uratalaa tsaahuaave.
jumalaa naa quinaanga tu purena chachillachi manen
entsa cha'tusha devijamulaa tsaa, tu pudee majudeeve.
challaya, manen naadequenga yalaren lalanu tu naaque
cunu ju'ba tsangue midingue' detsurequendetsuve, tu
paatetala tsaa depasa iqueyaintsaa cha'meemee, mun tu
camulan taanu, mun tu catyulaya tajtu delarainu detsuyu
entsa ajqueshaya.

12 - entsa pillalanu lende.

munaa ela eenu mama.

mu'pan nalaa maanu uma enu.

naamaa lalanu pan, mama.

lala' mumu naanan, pe'le.

maa lalanu eenu pan pi'le.

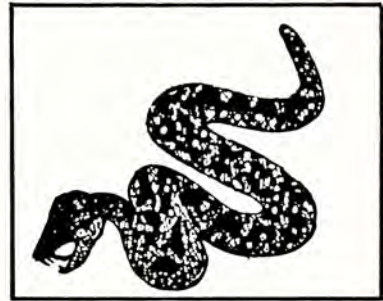
13 - tsangue manbiiquide entsa pillalanu
cha'palaachi

lala'

14 - nubatalaa cataadequeeshu pilla faatañuba
mangaapude.



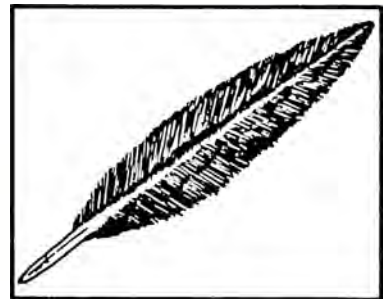
pa_lu



tsa_mi



pi_nu



ja_chi

15 - naaju pillaa faatañuba mangaapude.

p_n el_ _men_n ma_a
_nna_ma _ma _aanu _ami
e_aa i_na'ma _en_am_ _e'l_
uch inna'_a na_un
mu'_a'_anaa i_na na_un
m_n mu_u_aa _un_u
_anna_anu _u_u u_a

16 - mashturu panbala piiquide.

Diagram illustrating the construction of a wooden structure, likely a boat hull or a similar vessel, showing various components and their assembly.

taapai quiica

— 4 —



umaya debuudi'jisai.

1 – umaya debuudi' jisai.

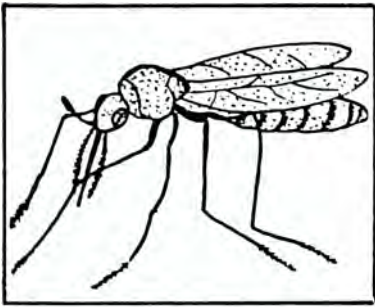
umaya jisai

ya ji

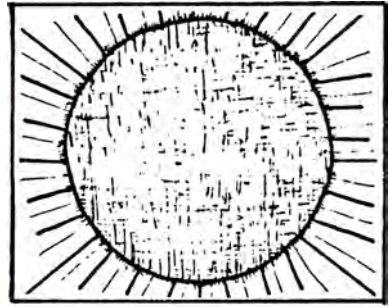
y j

umaya debuudi' jisai.

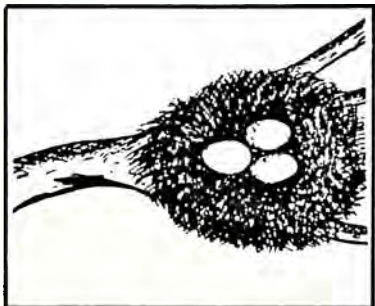
2 – queemijadeihuashu. pilla catamiya chi'cade.



juju



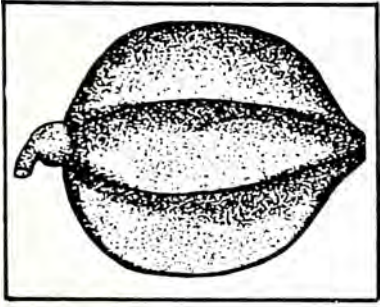
pajta



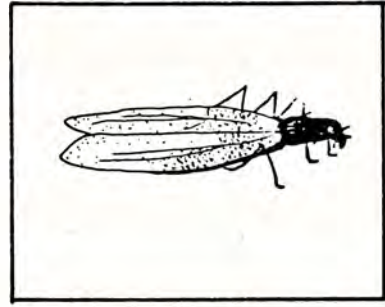
yatape



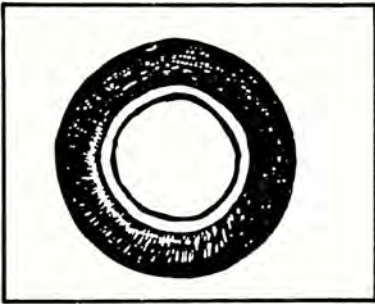
pipayu



papaya



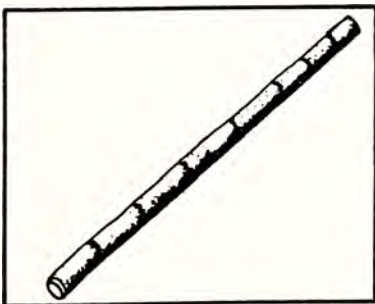
pijcuyu



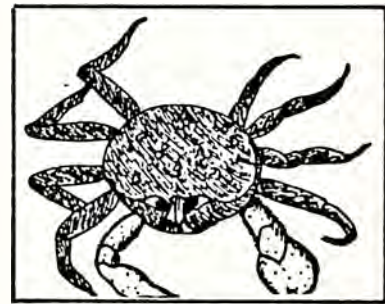
piyucu



juyallu



pajqui



pijnelu

3 – queemijadeihuashu: pilla catamiya chi'cade.

buudinu paate: lala caspele buudi'tuhuaa maalli maalli naa tique'ba quemu de'mitya umaya debuudi', mas caspeletsaju naa tique'ba maalli maalli mantyusai.

maalli, maalli quemuhuaaju'ba debuudi' taahuasha qeshu juntsaya yuj urave nejtaa tsaanujun.

buudi' taahuasha qeshu juntsaya, naa tiquenu ti' que'ba maratu i iinujuve.

tsa'mityaa umaya debuudi' jisai, caspelen naa tique'ba maalli maalli quemuhuaaju'ba, entsa ajquesha mas maalli maalli taahuasha manguenjutyu.

4 – entsa pillalanu lende.

apa laachi eepala jelemi, iya uma jimi neepachi.

mama laachi piyama naanain enu chui'mi. iya jinujuu chuinu.

5 - shillimee yalluque piiquide.

ya

juju

yanpa

cha'pe

panna

jayu

yapenu

yuupunu

yuupu

jupe

pi

junu

yuumu

ju

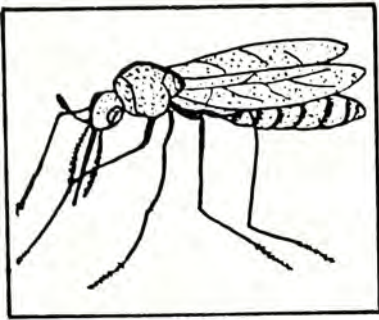
juu

janun

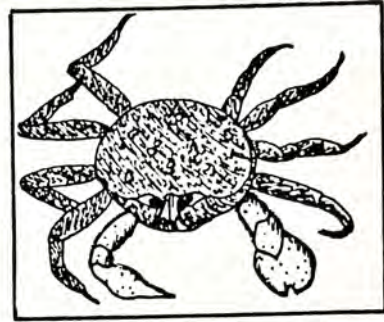
junuu

yuunuu

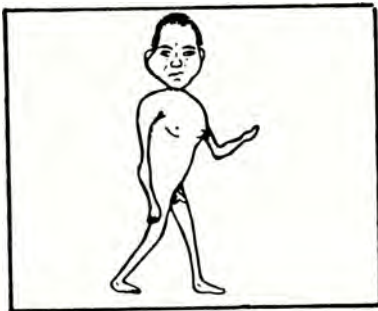
6 - queemijadeihuashu: pilla mangaapude.



_u_u



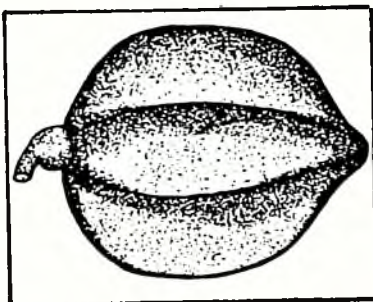
pi_nelu



_ujna



pipa_u



papa_a



yu_na

7 - naaju pilla mangaapuñaa lenganuuñuba mangaapude.

ina_ ma_a jay_

lala_u m_la mam_

na_m__ mii_u _a_a

_ya _la _ii_u

i_aa _i a_a

l_laa pip_nu um_

pann_ um_ m__nu

pe'l_n jun_ ja_

8 - mijacaañu pilla manbiiquide.

9-,entsa muute leca' malengue, malengue quentsumive. - 7
iya, naa uhuanuba, allaban fiquemuhuaayu ca, vee laaba
juumiñu, panda tene fityundyuyu, quepenmala supulanu
anque'tsu'chaya', panda tene, finuichanu jutyu rucu
huaayu, iya.

10 – mashturu panbala piiquide.

man quiica

— 5 —



baasha vijtya imuve.

1- baasha vijtya imuve.

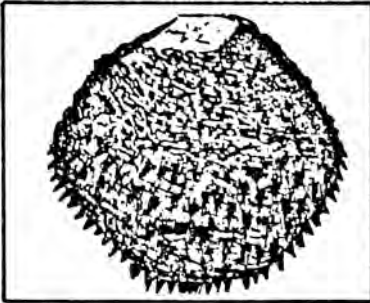
baasha vijtya

baa vij

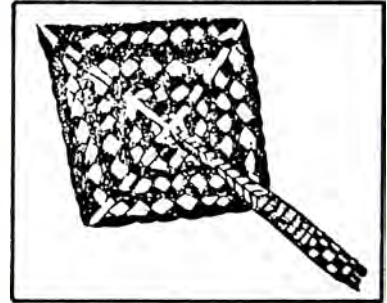
b v

baasha vijtya imuve.

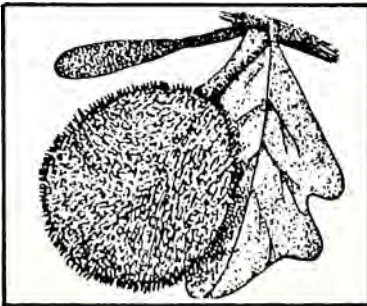
2 - cataadequeeshu pilla catamiya chi'cade.



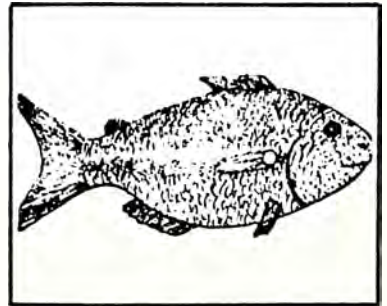
tinbuca



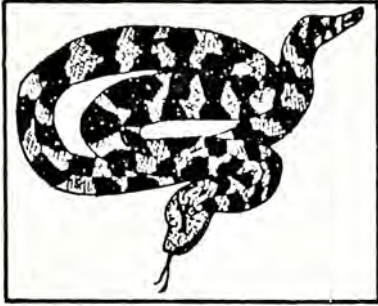
ñiveve



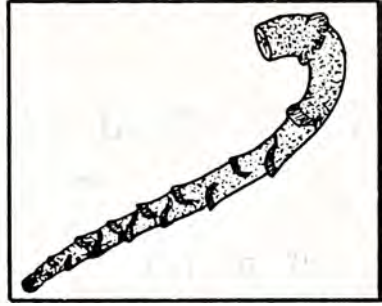
paanbuca



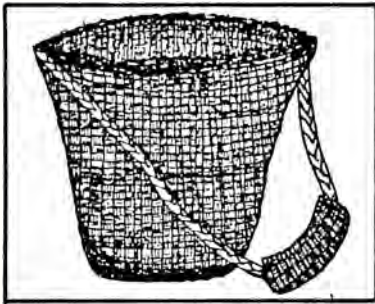
avilli



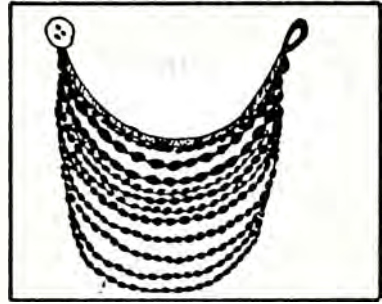
vesu



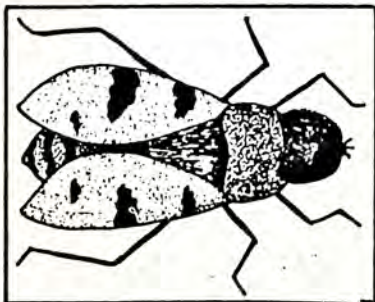
pandabuinchi



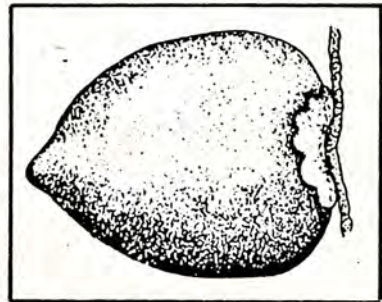
cubi



vi



vitutu



cainbi

3 – entsa pillalanu chi'cade cataadequeeshu juntsa pilla catamiya.

uhuain lala mantsa chachilla tsadeeyu caletala vijtya tajdetuyu, tsaaren mantsa ya queetala tadeeyu, laachi baasha vijtya imiya panda, pishu, kujchu, cafee, cayu vee cusas bain tsaimuve. nejtaa lala chachilla mantsa tu tajtuba tsaityaanga baasha vijtya imi, tsaimin lala vijtya que' manbirendalaya mantyumee tsangue'cayu baasha jimudeeyu.

tsaaren naa caletala quenu queñu bain mantsa, tena- tala tu urajtu cuyi jujelee, caapijula pujelee, mantsa tenatala naa tinhuajñuba ahuatyu deeve. lala chachilla naa baasha vijtya que'ba tenbiya quendaa naa aavijtya que'ba imuve.

4 – entsa pillalanu lende.

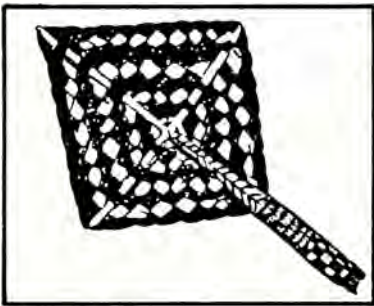
paanbu'chi laachive apa aachi chumu.
binbu'chiba aanu chumuve, uma lalaa
paanbu'chi tuunu panu jinutee mamamu.
umaa lala chachi jumee naa munuba
laatala cha'palaachee padaa apa.
mama enu chumula naamaa maanu
detin, uma maatu maa iba chunujtun.
apa mumu jinu depan inu pave'nu,
aanu chumaa janu ti'pa'miive.

5 – tsangue manbiiquide entsa pillalanu.

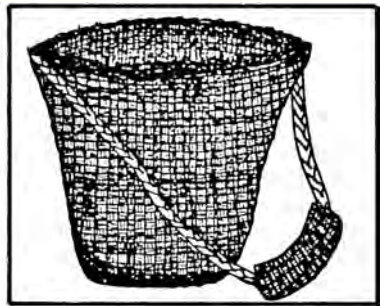
vi

biri

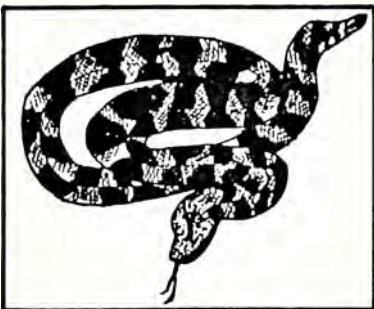
6 – nubatalaa cataadequeeshu pilla faatañuba
mangaapude.



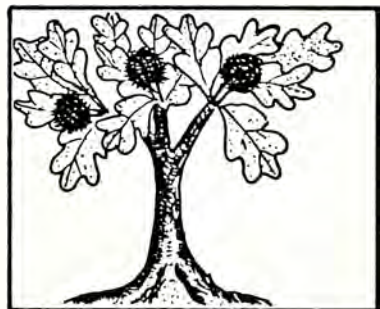
ñi_e_e



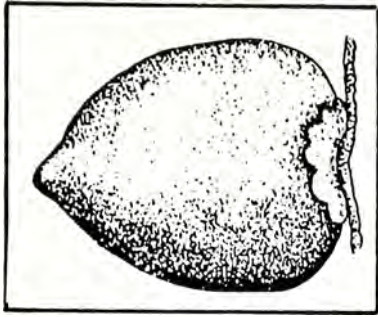
cu_i



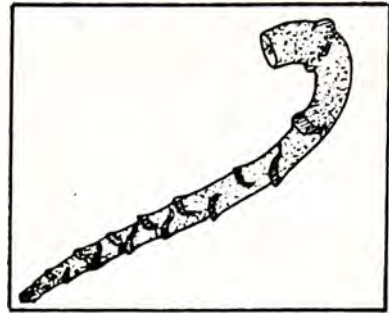
_esu



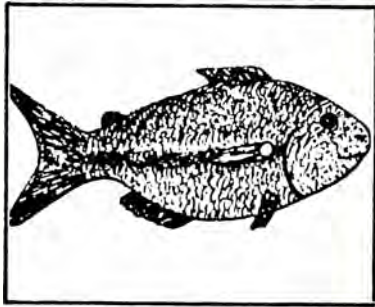
paan_u'chi



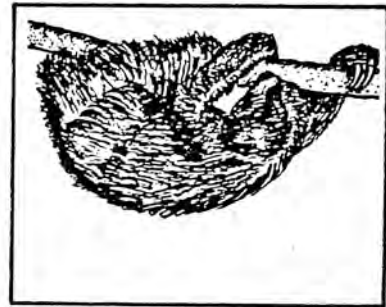
cain_i



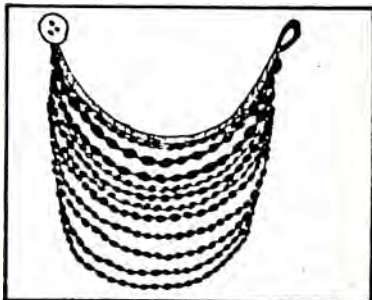
panda_uinchi



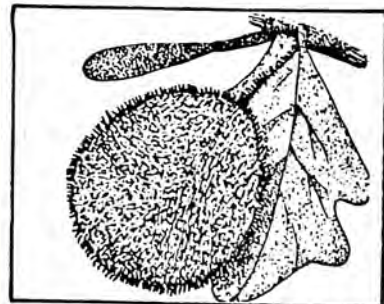
a_illi



u_i



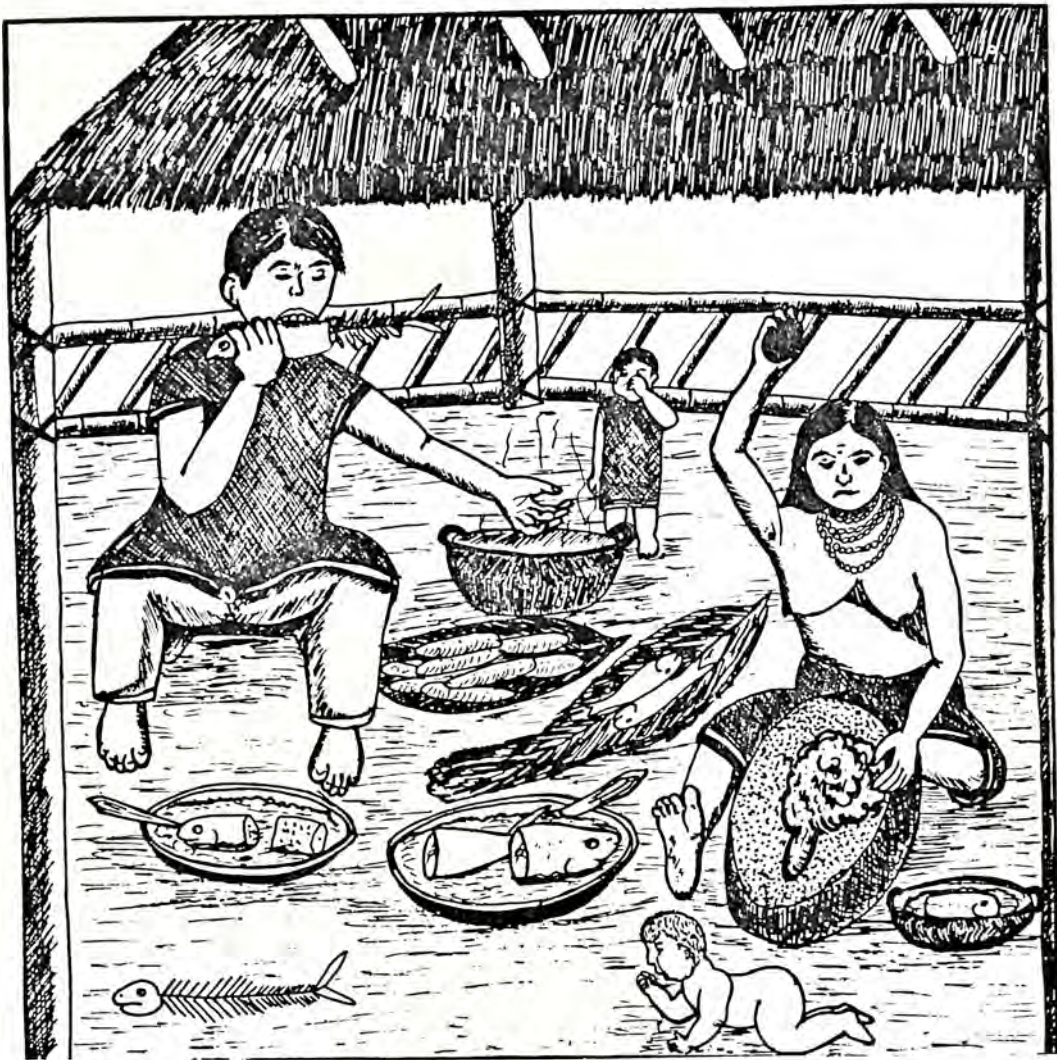
_i



paan_uca

manchishmain quiica

6



panda tene fityudaa

1 - panda tene fityudaa.

panda tene

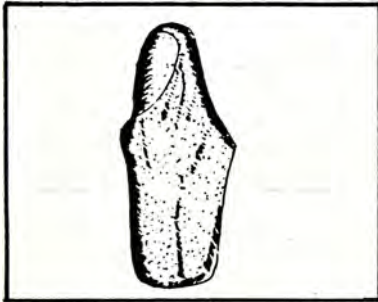
da te

d t

panda tene fityudaa.



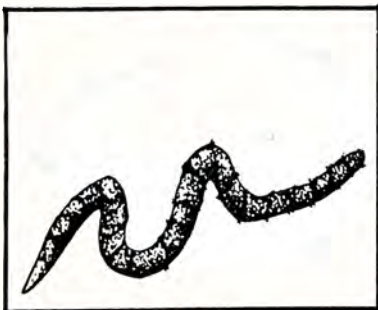
2 - cataadequeeshu pilla catamiya chi'cade.



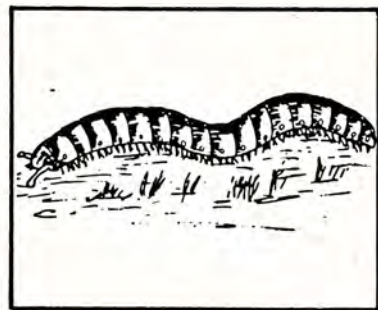
dicami



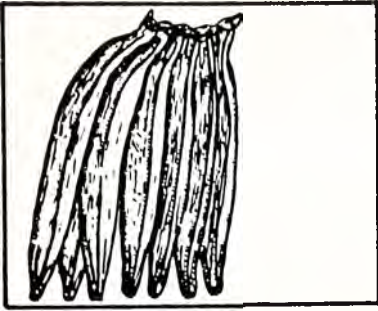
tinchi



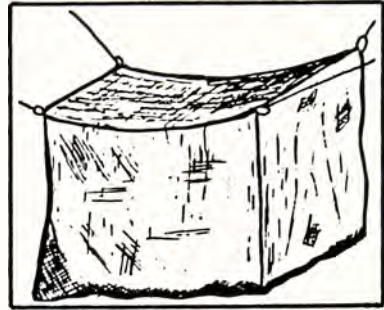
tupiñi



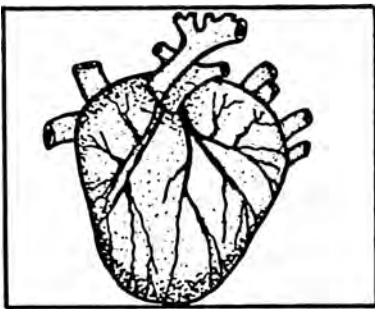
sendu



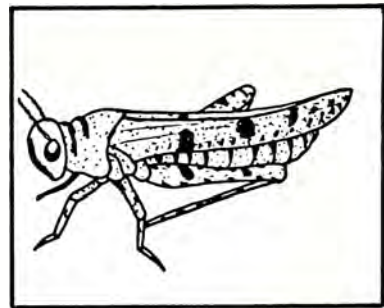
dijqui



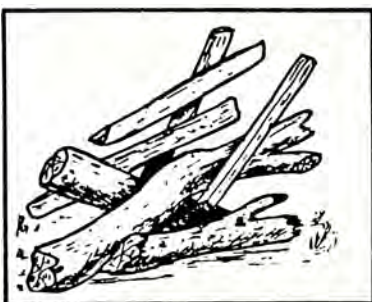
tuutu



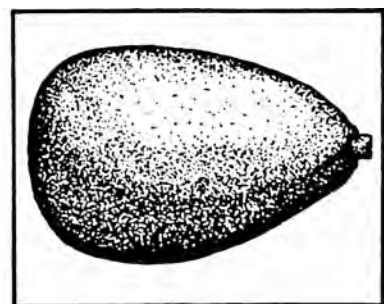
tenbuca



dendu'ishu



te



bandeetsururu

3 – entsa pillalanu chi'cade cataadequeeshu juntsa pilla catamiya. matyu lala chachillaya tarucaaba juqueyaamiñu malumee allaba tene fin chuqueyatyuve, camadinbu jayu lushi catatun ati'ca' allaba faimuve. naa tsanguityu' bain lala tenbiyaita nendaa alla mi'que' famuve, tsaaren caspee tinbunu pensanguiñuya jumaa tinbunu tsan alla putyuve, naa pisha bui'sha bain, nejtaa tsaimin jumaa tinbunuya naa chachi bain aachutyuhua de'mitya naa allabain faatajtuhuaami, yuj ura' huajcuhuaala pensangueñu challa tsan jela dejutyuve jumaa tinbunuya. tsenmin naa illapanbain jutyu, entsa dequive challaya tsangue' alla depirequentsula.

4 – entsa pillalanu lende.

lala' pandapalaya aajeleve, naamaa aajelenu mandaaviinu mama, aajelenu mandaavillindaa inuba pata me'eenujuve naama mannuju'ba.

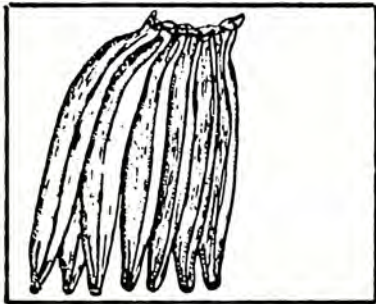
chachiitene patidaa, umaya naaquinaa vee chachee lalanu panujun, umaya yala vee chachinu miya' ja' bain nebaade miya' janu dejuve ajchiyu, umaya naa muba chachiitene panu dejuve.

5- tsangue manbiiquide entsa pillalanu.

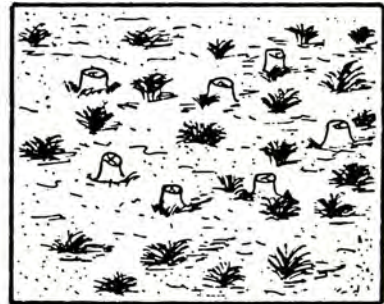
tu

dina

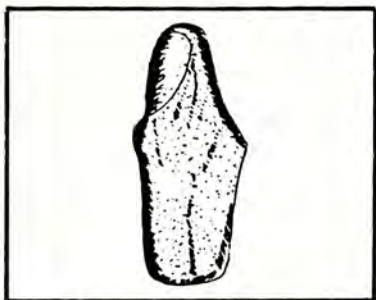
6- nubatalaa cataadequeeshu pilla faatañuba mangaapude.



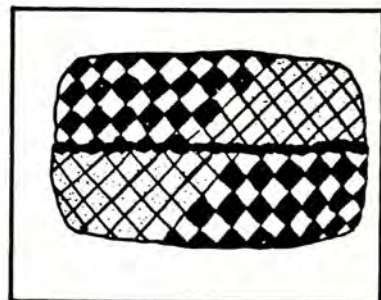
- ijqui



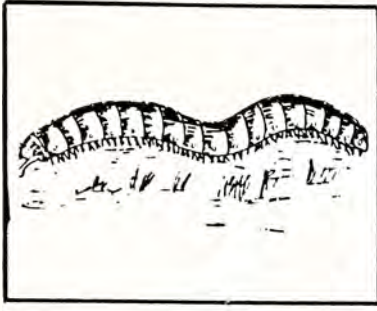
- u



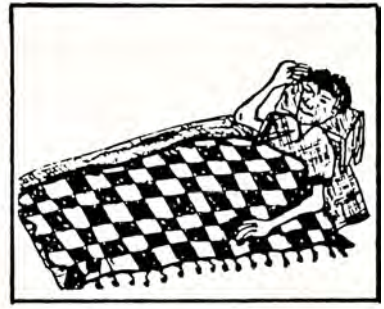
- icami



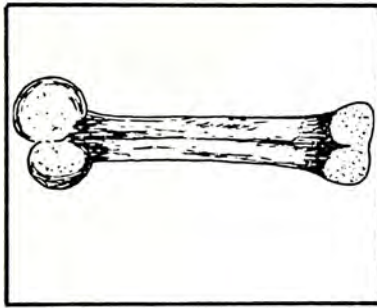
pu_e



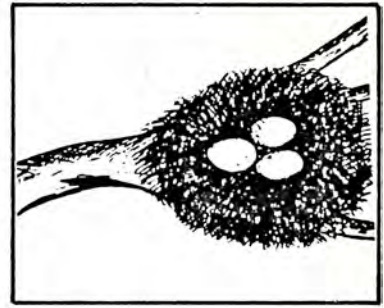
sen_u



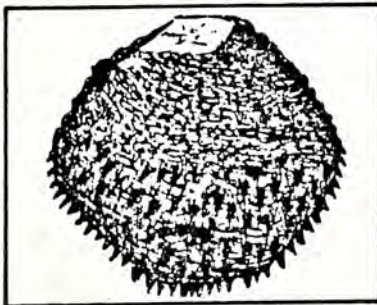
_ilu



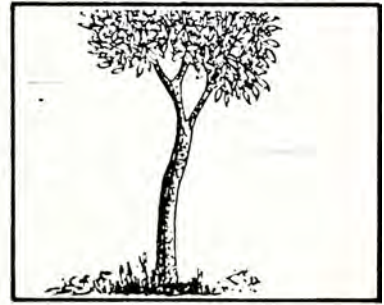
_acu



ya_ape



_inbuca



_ijchi

7 - naaju pilla faatañuba mangaapude.

m_naa pa_nu mu_uu _pa
aa__itene chu_ave _anda pa_an_
mu'cha__ee ma_nu _etin e_u
paa_de_alaa _maa _ulu __udaa
_amaa __pi uu_enna_e _e'le.
i_aa a_emu_chee maa_u _enve
_api_u taa_e _aa_du ma_i
a_a m_in __an_utu _ana_e
mub__ m__nu _nna'm_ _nu
_ndaa __umu_achee ee_u _enve

8 - mashturu panbala piiquide.

manchishpai quiica

7



pu'shicutisren netyudaa.

1- pu'shicutisren netyudaa.

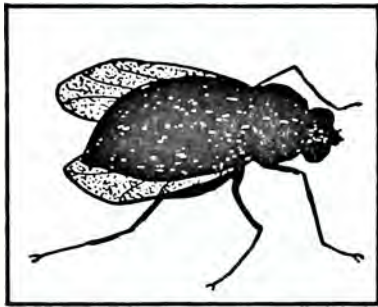
pu'shicutisren

shi tis

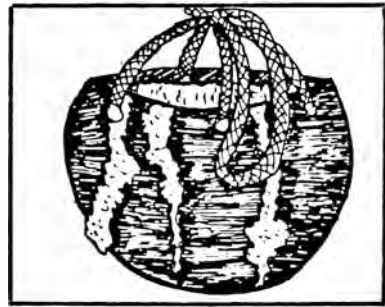
sh s

pu'shicutisren netyudaa.

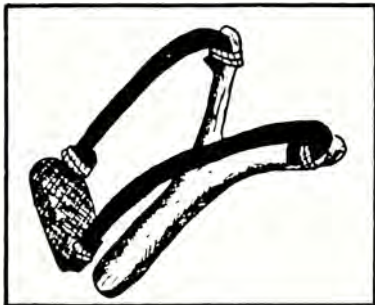
2- cataadequeeshu pilla catamiya chi'cade.



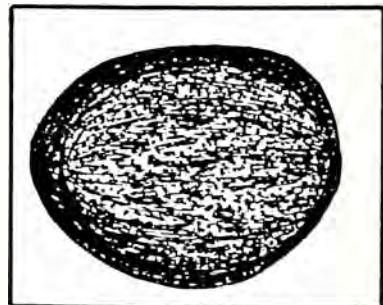
shiyaya



sabe



sachuhua



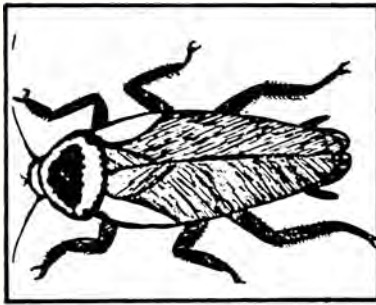
shupuca



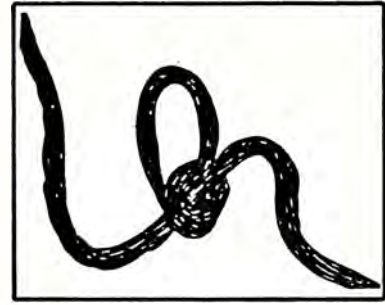
pishiñi



saibu'ama



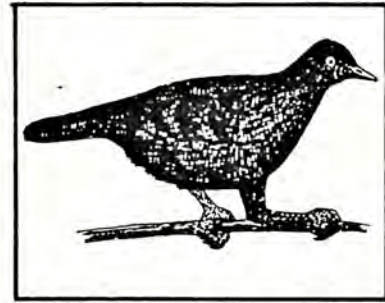
sucu'chilli



shindutu



shuhua



aspepichu

3 – entsa pillalanu chi'cade cataadequeeshu juntsa pilla
catamiya.

tsaave uhuain lala chachilla mantsa cayu pu'shicutis
nequeemuve, tsaaren mantsa tsaita netyudeeve, pensanguiñuya
tsaave ura miruculanu queradinu jutyuve, tsaamin naa puyanun
queradinu jutyuve, tsa'mityaave puyanubain miruculanubain jayu
jayu queranu tsumi, asu tsadenna miruculanu quicaa
quinuunun puyachi tene quicaaqueñu bain, naa tandu puya
puñubain tiba quei'nu tsuve, entsa mirucula judeeshu
juntsala chachiitalaya laachi chachiitala pudedeeve.

4 – entsa pillalanu lende.

umaya debuudi' pebulusha ayu mandaaviidaa,
yumaa ma'ayu dejandeyuve janu pamula,
endaa chumulaya jinu dejuyu mandaaviinu ayu.

nejtaa lala laaba lala' pebulusha puinu
jumiba manen vee pebulushaa puinu dejaa,
chachijumiya lala' junbiee punujumiba.

5 – tsangue manbiiquide entsa pillalanu.

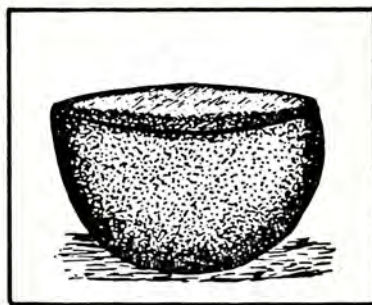
sa

sha

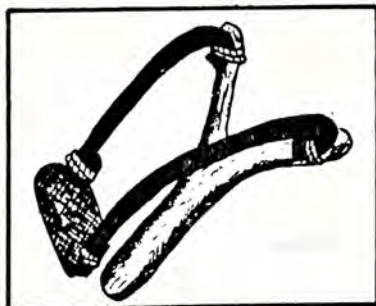
6 – nubatalaa cataadequeeshu pilla faatañuba mangaapude.



_abe



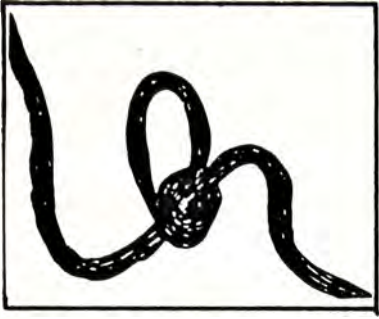
--ulla



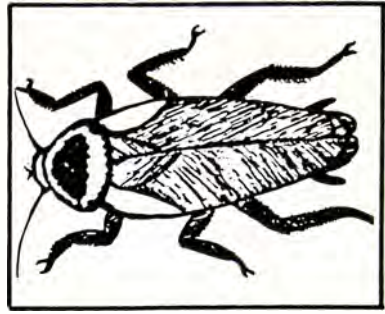
_achuhua



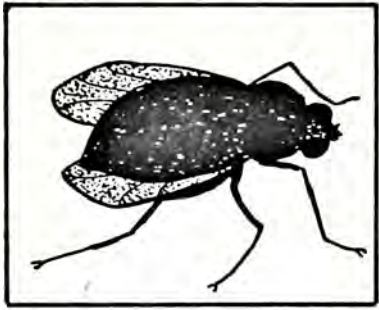
--uhua



--indutu



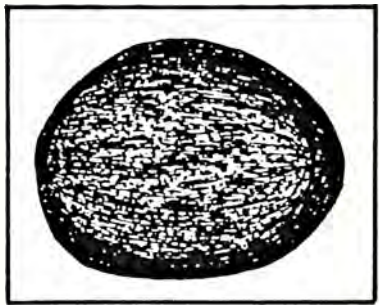
_ucu'chilli



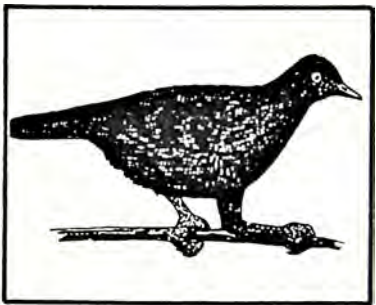
--iyaya



_aibu'ama



--upuca



a_pepichu

manchishpen quiica

8



maalli caaya qui'chuntsuyu

1 – maalli caaya qui'chuntsuyu.

caaya qui'chuntsuyu

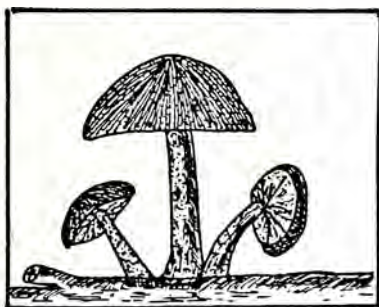
caa qui'

c qu

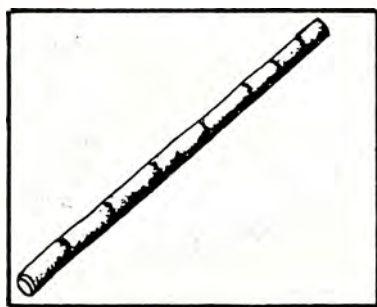


maalli caaya qui'chuntsuyu.

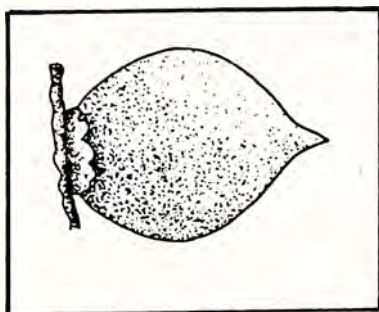
2 – queemijadeihuashu pilla catamiya chi'cade.



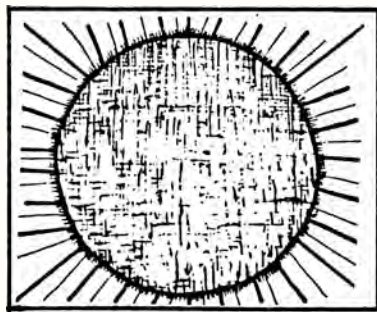
quijtyutyu



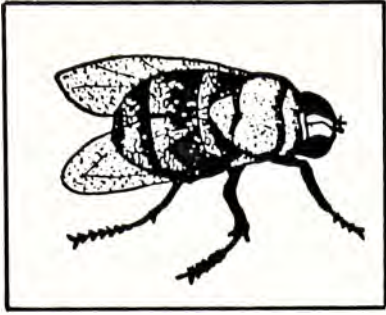
pajqui



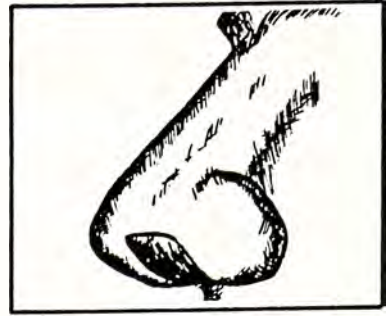
pucajti



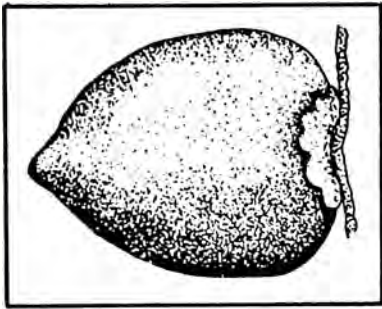
pajta



cangara



quijcapa



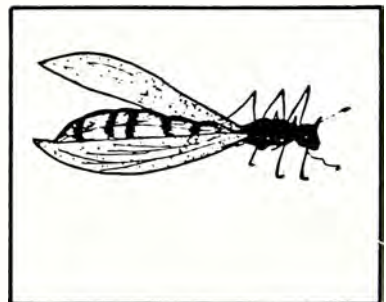
cainbi



canuchi



picanuchi



quinshui

3 – entsa pillalanu chi'cade cataadequeeshu juntsa pilla catamiya.
iya maalli caaya qui'chuntsuyu lala aa-yanuren pure'
chudenañu'mitya in caillanu yuj que'huaacaacaadequive.
maalli caaya qui'chushu juntsaya, ura'chuqueenuuve tenve.
tsa'mitya in shinbubaren chudinu maalli caaya qui'chunutsuyu
iba umaya.

4 – entsa pillalanu lende.

shinbu inchi ishcala lemeta naanain. te'mandaade nubanu
pu'tana'ba, cayu cuishnutee, yuj dajtee, cuishtu inaa shinbu.
mudeque cai'la, caana. tisee ayudanu dequive cai'la,
nendequen. cu'chi paatenu, patun de-ajaavive.
mu'shimbunaa ashte dequin pi'le ca, cepe'shimbunu dequive
ashte quila.

5 – shillime yalluque piiquide.

quijpe

quijcapa

quinbipu

caana'ma

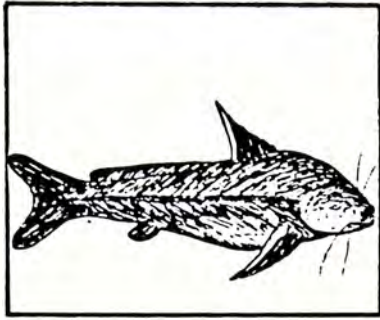
caashinbu

cajuu

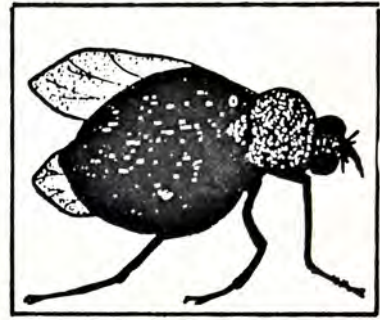
pajqui

cainbi

6 - queemijadeishu pilla mangaapude.



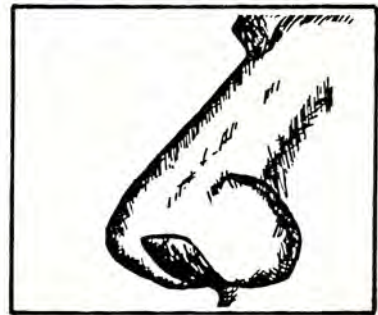
chii__i



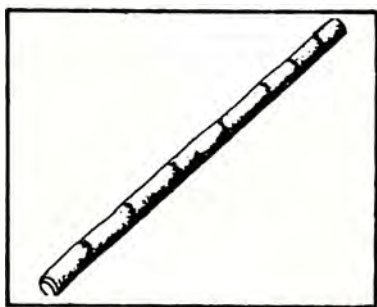
papu_a



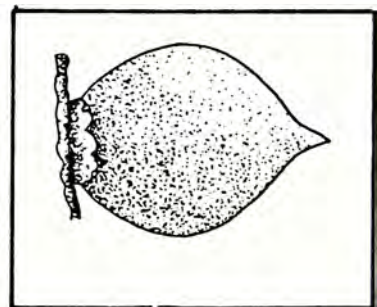
mishpu_a



__ijcapa



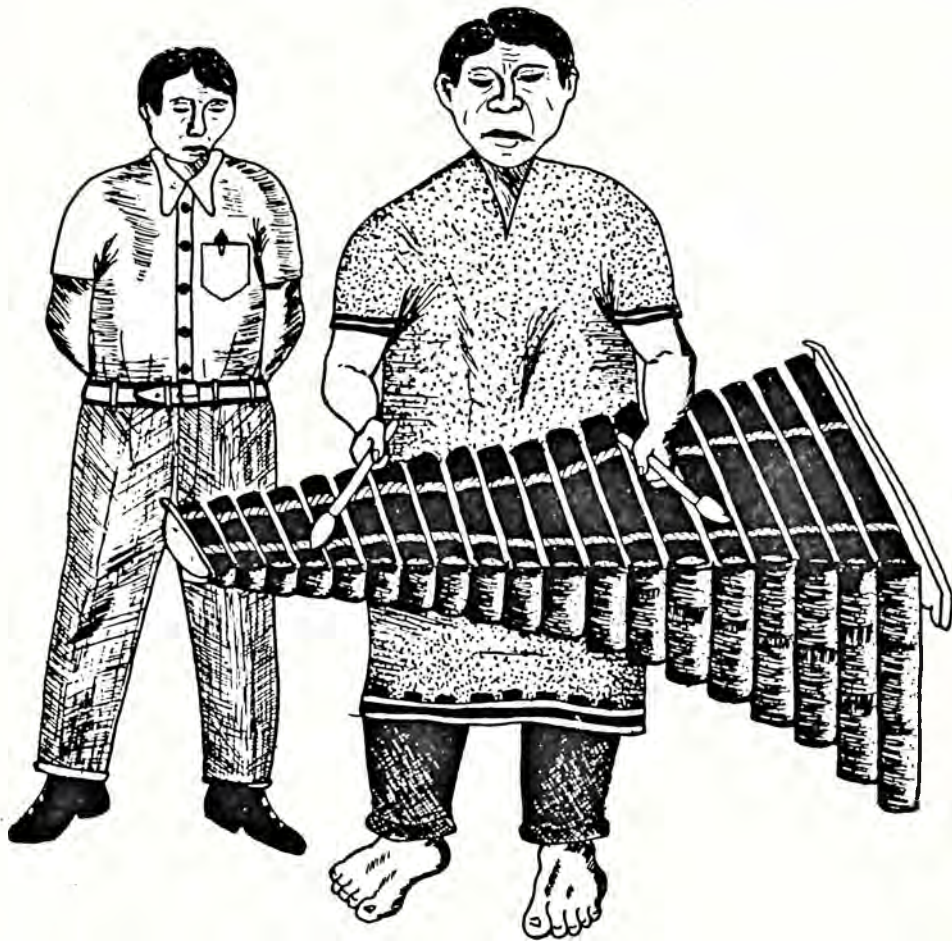
paj__i



pu_ajti

manchishtaapai quiica

9



chachilla' quentsumi manbashtyusai

1- chachilla' quentsumi manbashtyusai.

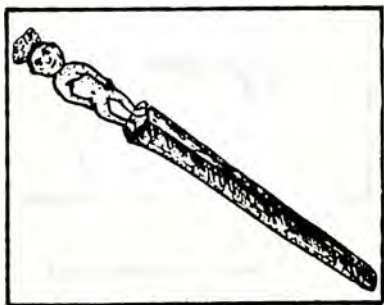
chachilla' quentsumi

lla' tsu

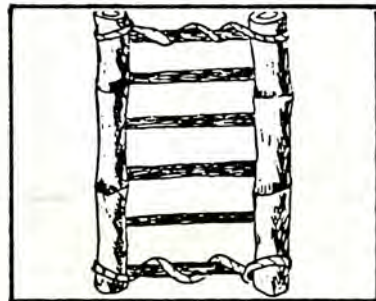
ll ts

chachilla' quentsumi manbashtyusai.

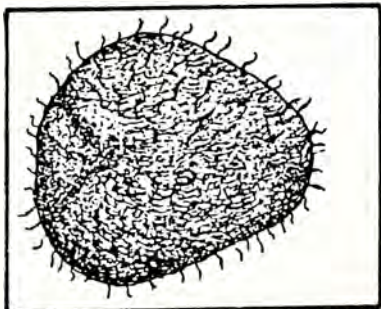
2- queemijadeishu pilla catamiya chi'cade.



tsuta



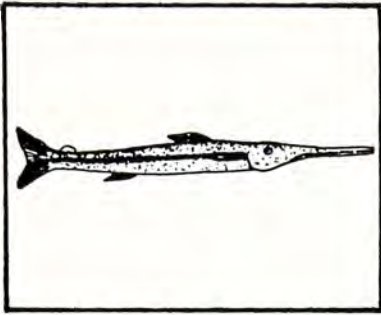
llapi



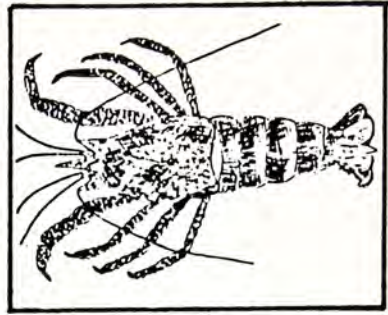
tsanbu



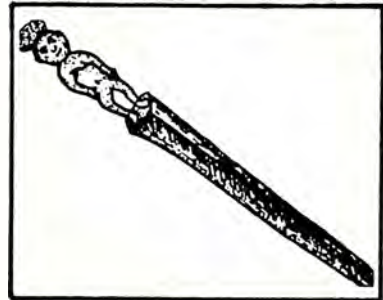
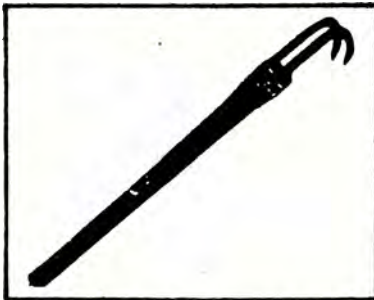
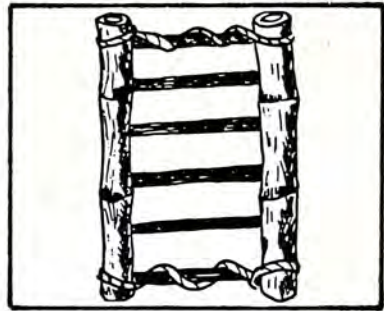
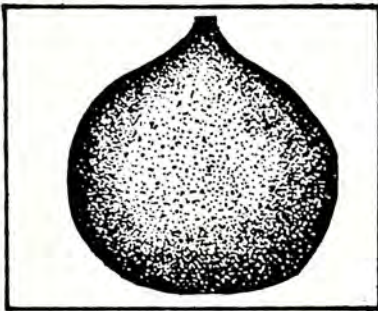
tsa'mi



tsu'villi



tsure



3 - queemijadeishu pilla catamiya chi'cade.

caspele lala' tyui aa-apalaya quiica mijtutene juuhuadee timuhuadeeve. naa, muba quiica mijtutene judeju, jumaa tinbutaya.

jumala tsaahuadeenuren challaya quiica devi'mija' mashtuu detiya' laatalaren, quiica queehuaamu, dejuyu.

4 - entsa pillalanu lende.

laaba panda demandaaviimiya manchishpen vijtya manchujpuntsumi. panda tajtu tiya'veelanu paqueshne' mayujpeedishnei'nu quede. mascu semanasha laaba cumuinchi caillalaba millai ji'maratu que'maja' alla mitya, mitya quenu.

5 - shillimee yalluque piiquede.

lluju

lluquica

llupi

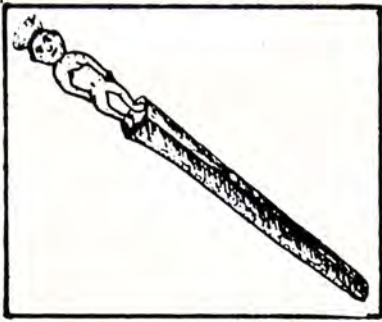
tsuupunu

tseinu

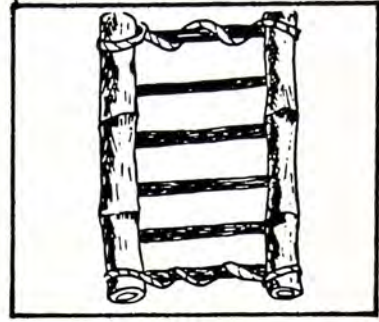
tsuta

tsujla

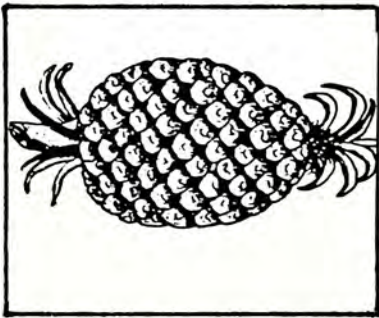
6 - queemijadeishu pilla mangaapude.



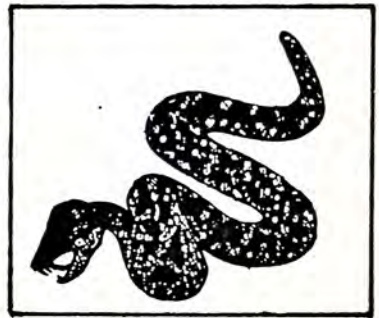
--uta



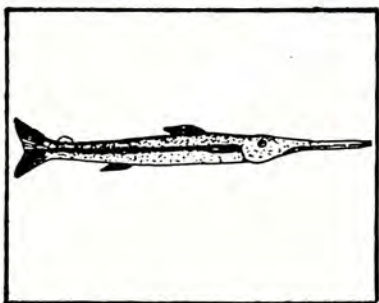
--api



chi__a



--a'mi



--u'vi__i



chi__anbu

7 – naaju pilla mangaapuñaa lenganuñuba mangaapude.

_uinbi llullunu pi cuinam_nu ja' cujchints_v.

supub_n j__ren pa_da demandaaviiyu quish__.

in na'ma u_beec_yai'tu a_panna chu_e.

iya ba_sha panda m_yay__.

iy_ pai s_pu m_yayu.

_amaasha _elu canu jintsuy_ maa__i panda daat__.

i_a ben_upu pure' m_ya__yu.

8 – mijacaañu pilla manbiiquide.

Paitya Quiica

— 10 —



gaaselanu cavituhuaa quemudee

1- gaaselanu cavituhuaa quemudee.

gaaselanu cavituhuaa

gaa huaa

g h

gaaselanu cavituhuaa quemudee.

2 - queemijadeishu pilla catamiya chi'cade.



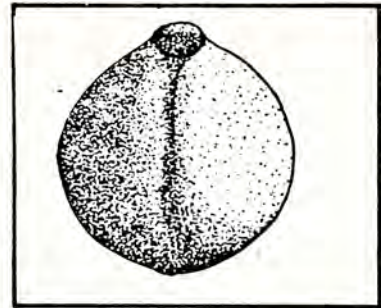
hualanbu



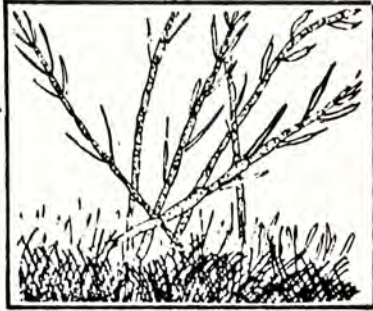
huagara



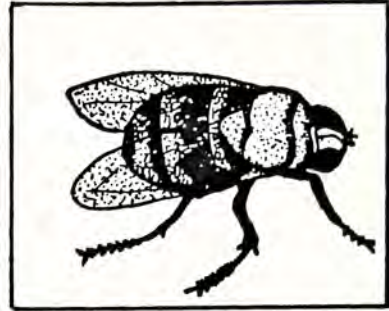
huara



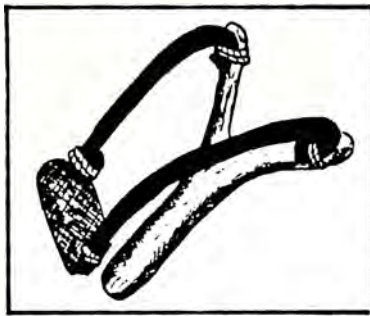
huayu



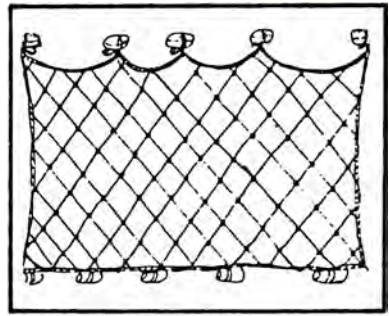
huanbiyu



cangara



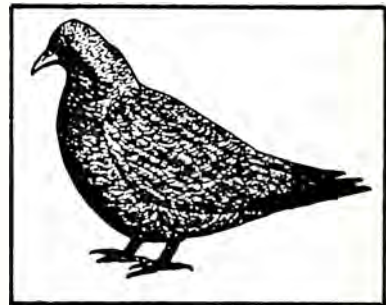
sachuhua



huaacu



huangururu



hua'pupu

3- queemijadeishu pilla catamiya chi'cade.

gaaselanu cavitu quelaya yala tsanguenu rucu deju'mityaa,
cavitu queque, quemudeeve. yalaren naa gaase quendechuñuba,
cavitu que' deechu' demantyushu juntsaya, na'baasa firuquen,
chunanu dejuñu'mityaa, cavitu que' ashte queque, quemudeeve,
chaitala.

4- entsa pillalanu lende.

iba caspele nacunguunu uhuatala, dajca tennaa talaya muba
cule quenchi bibujdetaa. tsaalaren, challa iba jayu entsaidetitaa
cule jayu manbashyu. tsenbalaa tsandintsunaadenave. juntsa
unbee cule mijtuhua tennaba dajpamaa tintsunaanala. iba
musuumalaya cule quenu jindu'ba, shu'ju pacaquita
jijintsumuhuaayu. tsaanu uhuatalaya muba cule quenchi mi'dinu
pudejdetaa. inchee pai malu juu culenaa, man malu
quequentsunaadenaa.

5- shillimee yalluque piiquide.

cuhuanga

huaacaanu

huaqaa

huaapu

hua'pupu

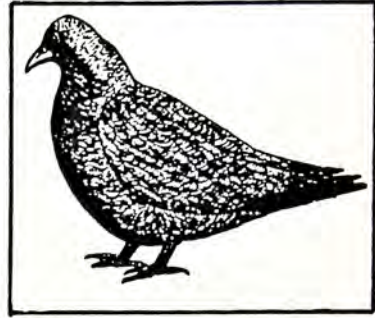
huaacu

alagara

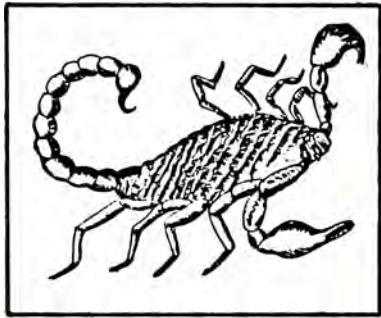
6 – queemijadeishu pilla mangaapude.



_ua_aa



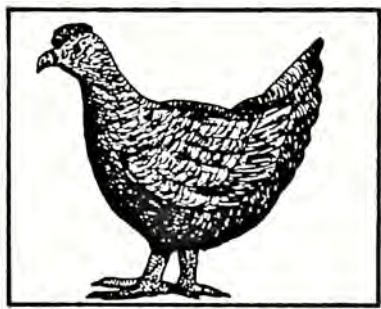
ua'pup



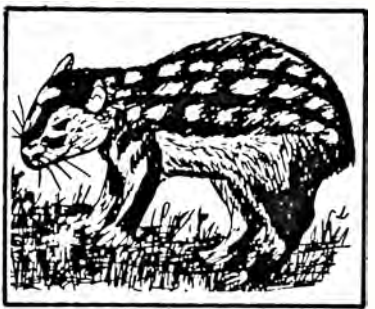
ala_ara



_uashu

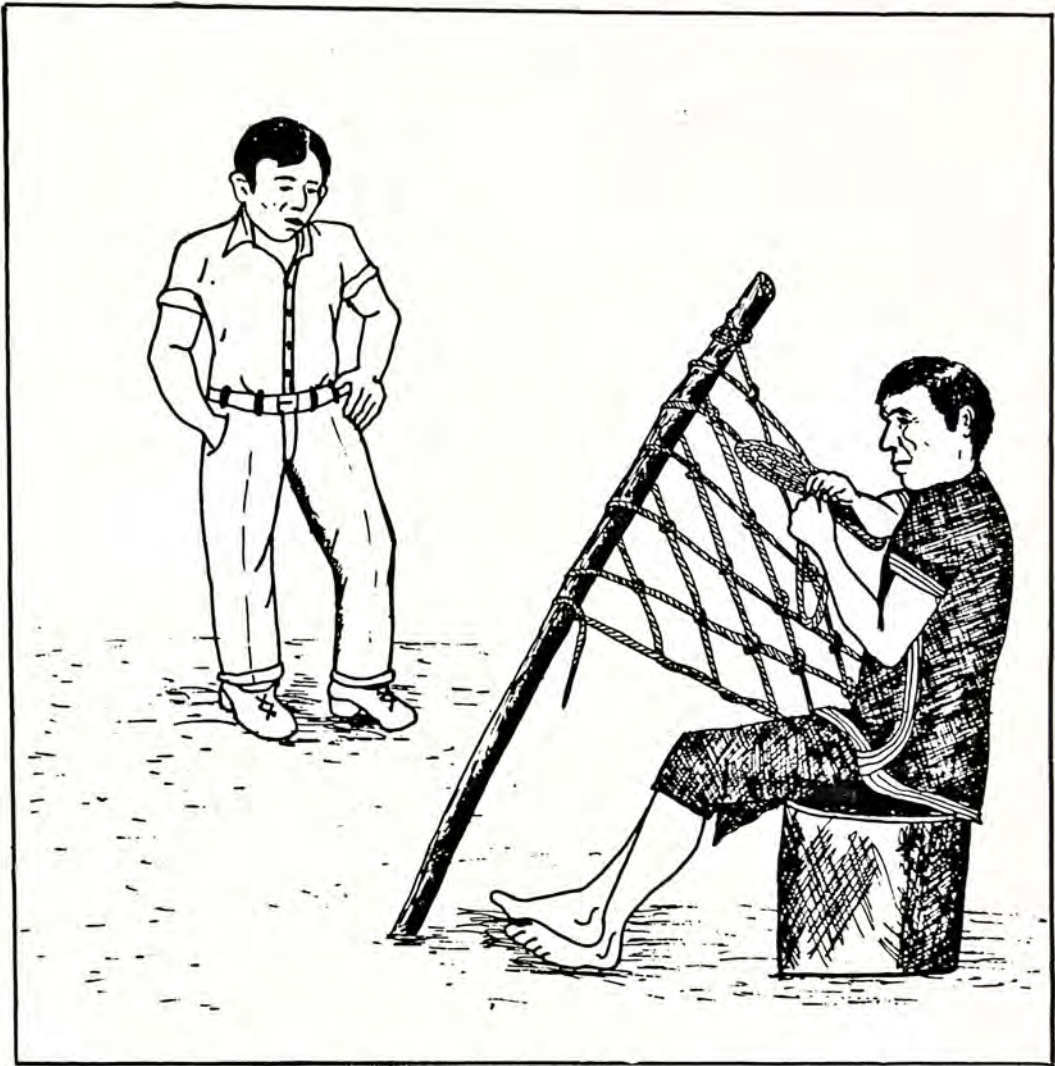


--allapa



_ualanbu

Paitya ma Quiica
—— 11 ——



Tyui aa apala' quentsuminu quendyatyudee

1— Tyui aa apala' quentsuminu quendyatyudee

Tyui quendyatyudee

Tyui dya

Ty dy

Tyui aa apala' quentsuminu quendyatyudee

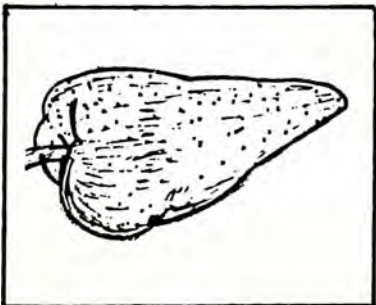
2— Queemijadeishu pilla catamiya chi'cade.



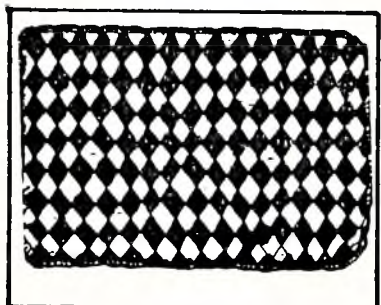
tyaapa



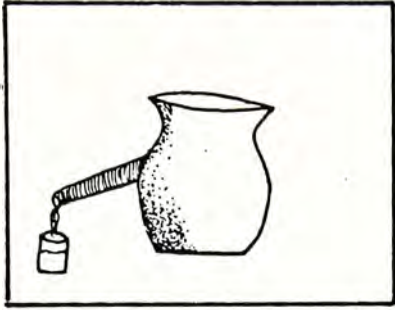
dyabulu



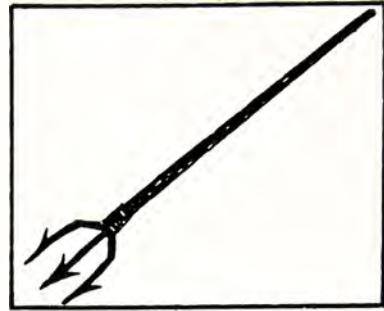
tyu



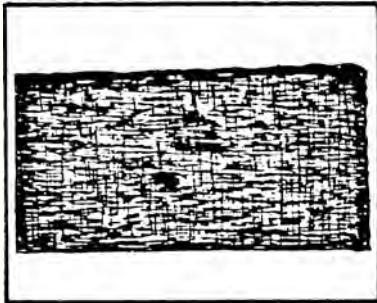
tyapu



tyullalla



putyulla



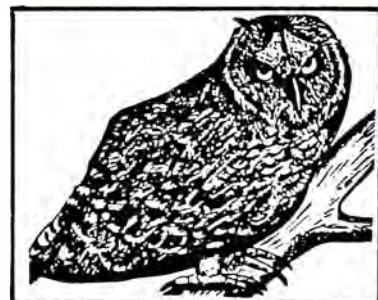
tyashqui



dyunguilla



tyushu



tyutyu

3— Queemijadeishu pilla catamiya chi'cade.

Caspee tinbunuya lala' tyui aa apalaya: juhuallitene panaahuadee, timuhuadeeve. Tsenmin naa huara bain nenbulutala, juutene, puuhuadee timuhuadeeve. Jumaa tinbunuya naa supula bain, yala' tyaapa' queñu tyuñatene "tyuñá' pijtaahuadee", timuhuadeeve.

4— Entsa pillalanu lende.

In na'manuya lushi tajtu unnalabillaya cuhuanjutyu na'manave chumi, mun lushitaa unna deju'ba juntsala dequive cala in na'manu.

Tsa'ba iba lushi tajtu ju'ba tsaahuanga: mutuu, tucadijcu, illapan juula tami; inuya naa muba mi'di'chudeeve tenna chumuhuaayu. Iba jeendaa jiishu juntsaya: huashu, mana, pan-ele, neetyushu juula. ca'maja, majaimuhuaayu. Supu miyajturen iya, ai'mi'quenu ajchuu musuyu.

5— Shillimee yalluque piiquide.

dyabulu

dyaipunu

dyaitsu'nu

tyapala

tyullalla

tyuipu

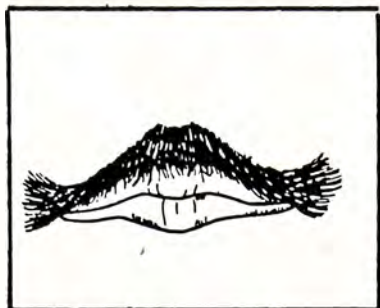
dyundenu

dyainu

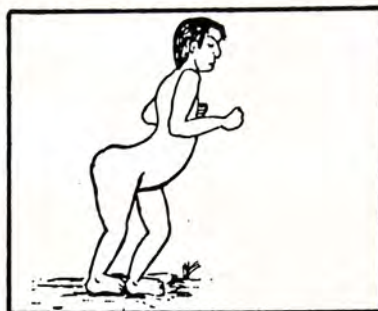
tyunbi

ajtyudinu

6— Queemijadeishu pilla mangaapude.



tyai_u



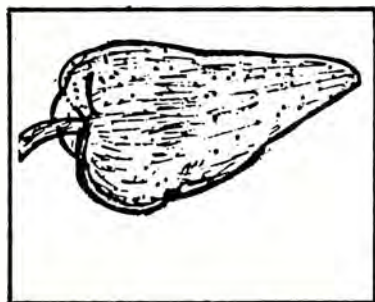
ajtyund_ _



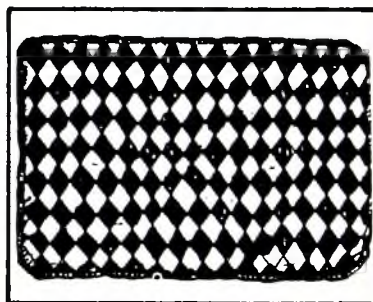
_ _ aapa



_ _ abulu



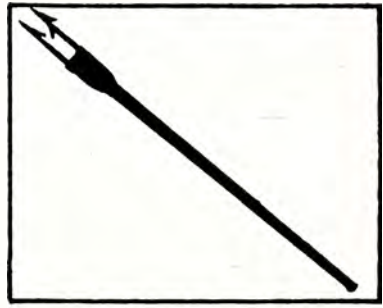
_ _ u



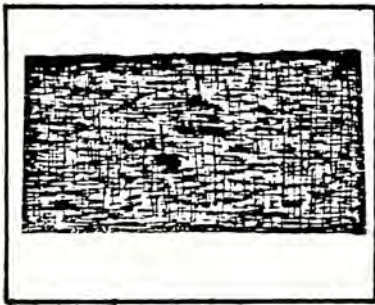
_ _ apu



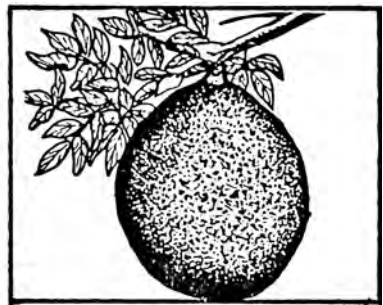
--_ullalla



pu_ _ulla



--_ashqui



--_unguilla

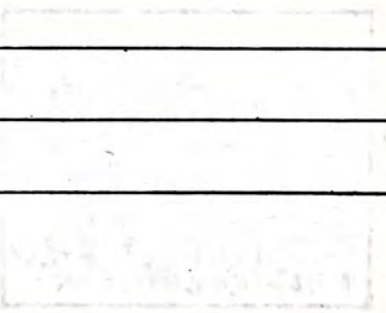
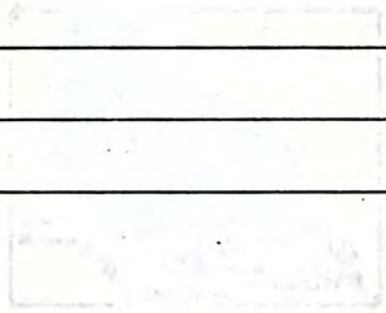
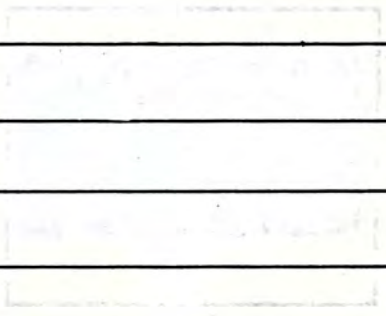
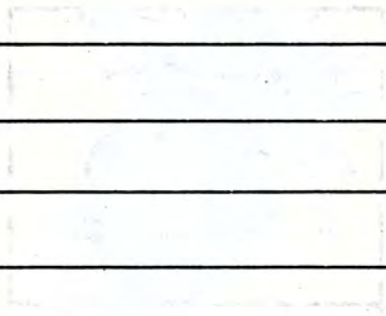
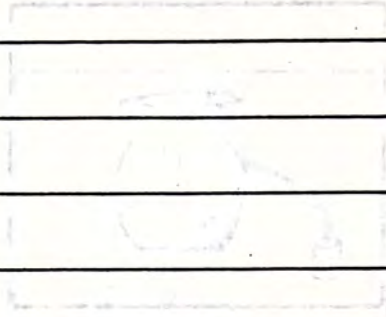
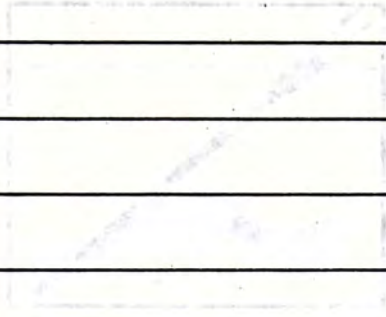


nee_ _ushu



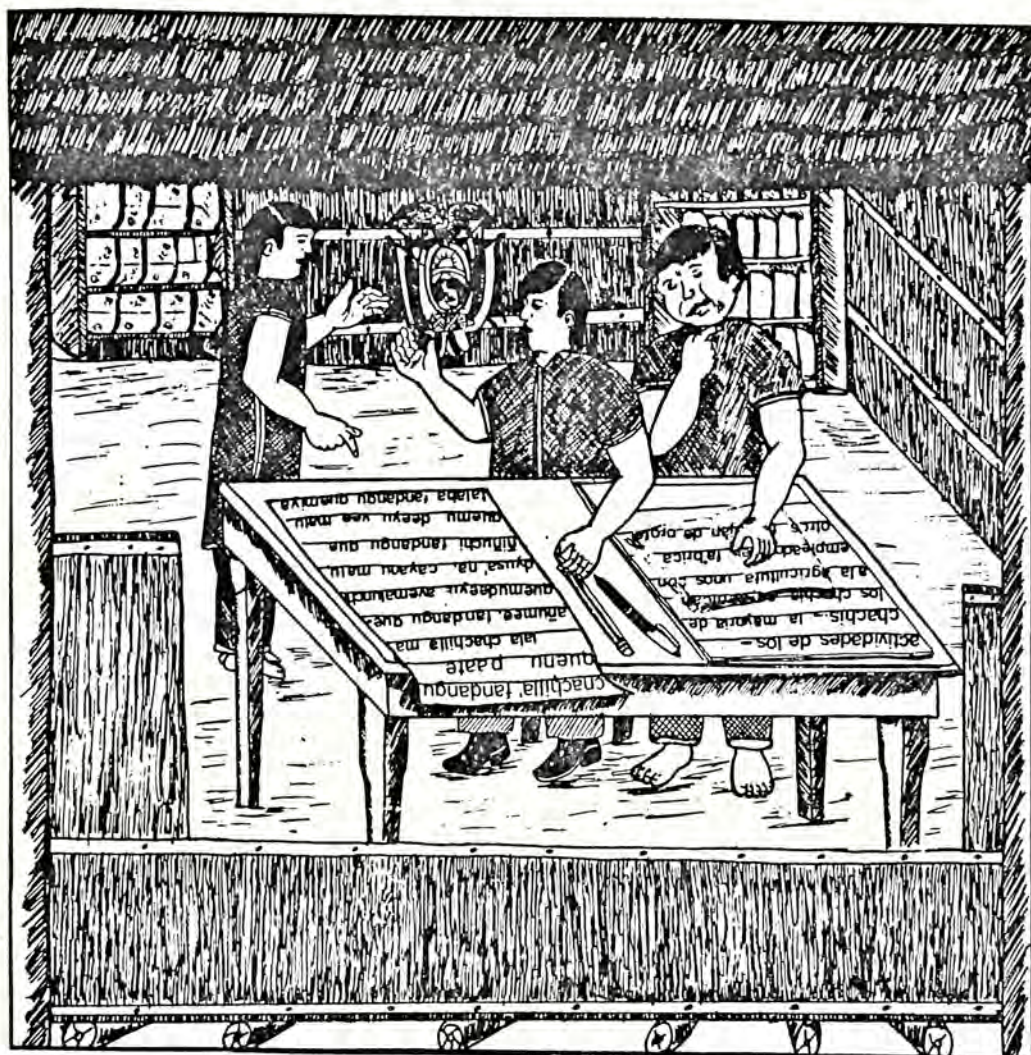
_ _u_ _u

7— Mijacaafu pilla manbiiquide.



Paitya pai Quiica

— 12 —



Urave lala' palaachi pantsufu

1— Urave lala' palaachi pantsufu.

Urave

pantsufu

ra

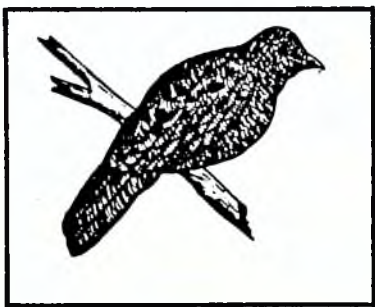
ñu

r

ñ

Urave lala' palaachi pantsufu.

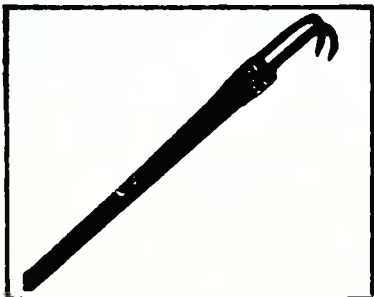
2— Queemijadeishu pilla catamiya chi'cade.



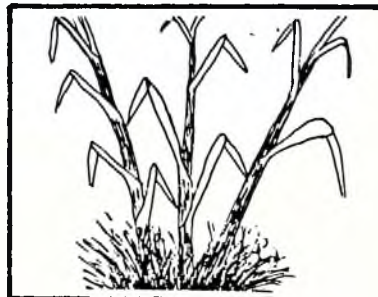
saqueru



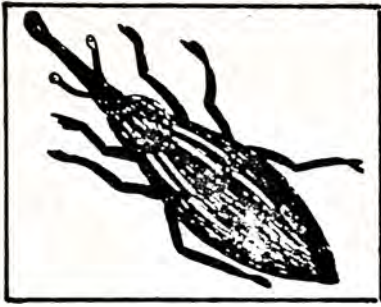
beru



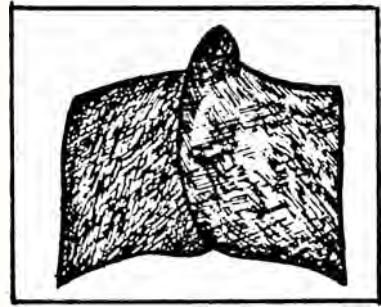
tsuuberu



ñañi



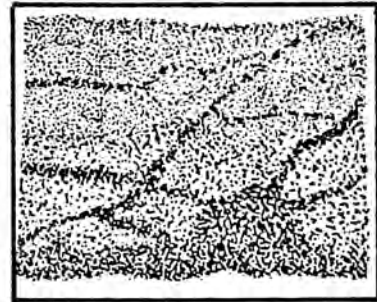
cuperu



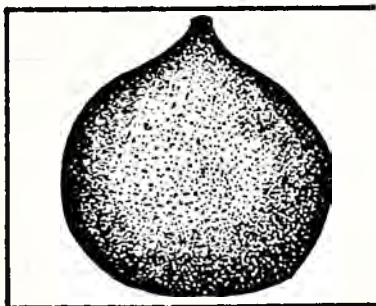
tyuña



acara



ñiipe



tsururu



ñami

3— Entsa pillalanu lende.

Tinbunu tsandimaa timudeeve. Mana sapunu catatu. Aiquedaa ti', yuj bulla papatimi. Tsenñun sapu jayuuba pacaty jujuhuaatimudeeve. Yuj bulla painshaa sapu bain pacatu tsandimuhuaatimudee; tsejtaa, aiquedaa timi.

Sapu tsandinmalan mana bain manbacajtu tsandimi: tsejtaa, aa cuyi mi'quedaa, ti' demi'quetu, ma cuyi aa cuyi, decatala. Junaa apushtanguenu tila.

Tsenñu sapu ya'bululaba hua'di' paviiquela. Depaviiquetu tsandila: lala aa cuyinu shillii paadidaa tila.

4— Shillimee yalluquee piiquide.

suhuara

naraa

cangara

ñainu

ñite

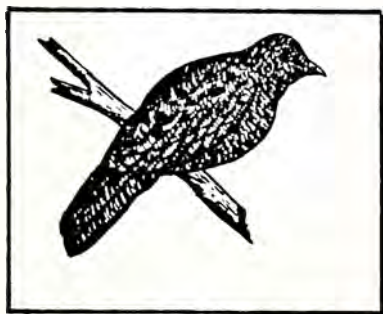
dicami

piñi

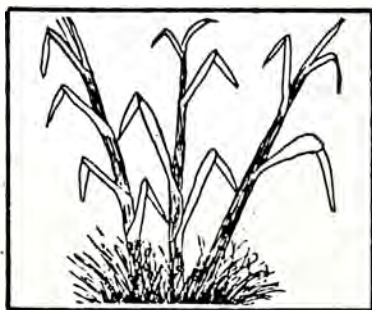
ñaami

ñaña'rucu

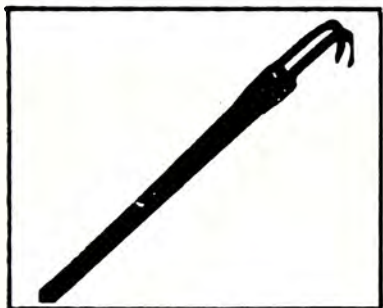
5— Queemijadeishu pilla mangaapude.



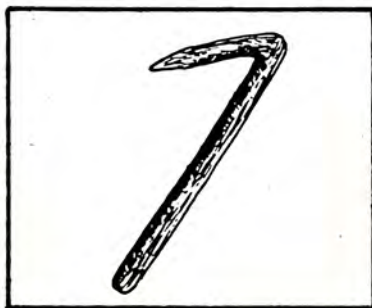
saque_u



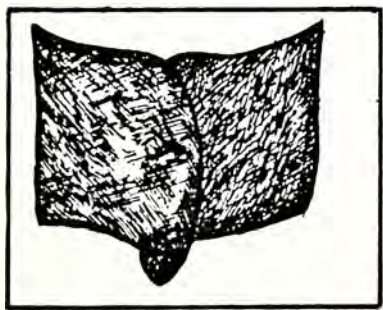
_a_i



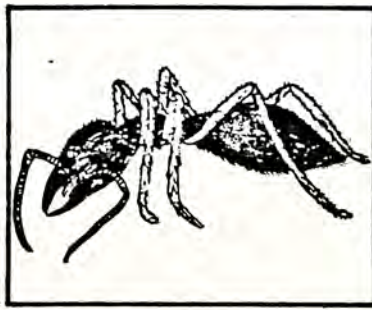
tsuube_u



be_u



tyu_a



_ami

Paitya pen Quiica

———— 13 ————



Miruculanu meneste faamuve

1— Miruculanu meneste faamuve.

faamuve

faa

f

Miruculanu meneste faamuve.

2— Shillime yalluque piiquide.

faapunu

firu

fe'sha

fe'tu

fidanda

fi'cunu

fa'penu

3— entsa (f.) puu palaa piiquide.

4— Caapilla. Aapilla.

Caapilla

a ale
 aa aapifi
 b bensupu
 c canu
 ch chilla
 d danu
 dy dyanu
 e enu
 ee eenu
 f finu
 g gaase
 h huannu
 i inchi
 ii iila
 j jila
 l lemu
 ll llapi
 m mana
 n nana
 ñ ñami
 p pishu
 qu quenu
 r rucu
 s supu
 sh shasha
 t tusha
 ts tsunu
 ty tyanu
 u utya
 v vinu
 y yala
 ' pi'nu

Aapilla

A Ana
 Aa Aamama
 B Benja
 C Cali
 Ch Chama
 D Dañiel
 Dy Dyabulu
 E Epu
 Ee Eepi
 F Fitucu
 G Gabriel
 H Hernán
 I Ipuca
 Ii Iipipi
 J Julia
 L Luisa
 Ll Llutacu
 M Magdalena
 N Nena
 Ñ Naña
 P Pepe
 Qu Quela
 R Riqui
 S Sapita
 Sh Shupa
 T Teende
 Ts Tsuta
 Ty Tyaqui
 U Upi
 V Vijle
 Y Ya
 ' Pi'le

5— LENGARE'PAQUE'MEEDE.

Lala'tunu fibala peechullalaba pamu chudenatya, tsadenayu entsa tunuya lala ajque'chudi'ahuamudeeyu naatandu mii maluba. Tsenmin entsa tunu chudi' ahuamulaya veevee chachidejuyu. Lala'tunu ajque'chu' ahuamula entsalaa juntsa chachideeyu: Chachi, Tsachila, Quichuhuala, Cuaiquerla, Shuhuarala, Cufanla, huaula Seculaya, Tetetela, Saparula.

Lala Chachilla entsa tunu manmii chudenayu, tsenbala Shuhuaralaya penchunga mii, dechuve, Tsachilaya miimanbatsa' chudenave, Quichuhualaya paimii miyun, mantsalaya miitala judeeve. Tetetela Saparulabaya demanbiyaindetsaa aadejutyu' mitya, entsa chachillaya cayu vee chachilla fibala naa, entsatushaba vijaindetyu, chumula yala'palaachi demanbashiindetsaa. Tsaimin mijaqueetyaa jayu judeeñu' mitya, tsaanun tsadequiña mantsa uyaa rucula quica pique'yala'paate tsuutun aajutyu'mitya mijaqueetyaa tipensa tahuadeeñuba juntsa chachilla tipalaachi pamuhuadeeñuba, naanataa chumuhuadeeñuba.

Tsa'mityaave lala' palaa'lala quenutsuminuya manbashinjutyumi, tsandennan mantsa na, miyaalachee, naa incaana cha'palaachi piiquenutya'ba naa mi'nutya'bain pudenguenjutyuve.

Lala Chachi, Tsachila, Cuaiquerlabaya Custasha chumudeeyu, Quichuhualaya isha tusha Sierashaa chumudeeve. Tsenmin mantsa Quichuhuala Shuhuarala, Achuhuarala, Siunala, Cufanla, Huaula, Tetetela, Saparula Urientesha chumudeeve.

Entsa cumuinchi chachilla judeehuashu, juntsalaya, entsa tunu chumudeeyu.

Lala tsadeeyu entsa chachillanu queraqueyaaba juqueetyaa lala. Tsa'mitya umaya debuudi'taahuasha entsa chachillaba quisai.

PAQUE'MERA

1.- Naajulaa lala'tunu ajque'chumuhuadeeñu.

2.- Lala chachilla nan mii dechuhua; Chachilla, Shuhuarala,
Quichuhualaba.

3.- Naajulaa cayu aadechuñu entsa tunu tsenmin nan.

4.- Nejtaa mijaqueetyuñu naadenafuba.

5.- Maa jayu quiica depiique'tsuuñu.

6.- Tsaafu'mitya tyee manbashiquenjutyuñu.

7.- Naaju naaju Custasha chumuden.

8.- Naajulaa Sierasha chumuden.

9.- Naajulaa Urientesha chumuden.

10.-Naaju chachillaa Sierasha manbaatechu, Urientesha manbaate
chudenan.

11.-Ti mumu, ti mumu entsa tunu dechuhua, "chudenahua".

12.-Entsa chachillanu milla queradeehua.

13.-Naaju chachillaa laaba Custasha chumuden.

14.-Nan chachilla dejuhua entsa tunu chumula mi'tu caapude.

15.-Entsa chachilla jumula mabalaa patimudejuhua.

6— Lala' chunu paate.

Lala chachilla naa-uhuanuba quepenene taahuasha quenuichaya, chayaimuhuadeeyu. Dechayantsunmalaren, supula quepe panda tengaacaa-quemudeeve, quepenene pajta luquindyu taahuashaquenu jindetsufu'mitya ya'rucula.

Peyai'mujchiya naa-uhuanuba quepenene taahuasha quenu jumi.

Laaba tsanguen taahuasha quenchutaa, lushi lare' jalli ca'panan chunuu juqueeve.

7— Tu paate.

Lala caspelelaya ura'chumudeeyu. Tsaaren challaya lalanu fibala devijai' tu dechipaquendetsufu'mitya cayu beneya, ura'chuqueyanjutyuve. Tsaaren lala' Taahuasha quetyu' jeenbaatala chumu tsaquiren tsaindetsuyu, veelachi tu, dechipanu quecutintsula.

Yaichiya uutaahuashque': naa tiba seenguenunainsha chuturen, lala taahuasha quityu' jeenbaatala dechufu'mityaa: yala pensanguetu lalanu lamucure'. Lala tu mutyai'tudeeve. Taahuasha quityu' jeenbaatala chulla detya'mityaa, lalanu cucha judeefungue decure' mityaa yala devija' lalanu tu, dechi'quenu quendetsuve, veechachillaa.
