



QUICHUA RIMAI YACHAI 1

QUITO, 1987

# QUICHUA RIMAI YACHAI

1

C. E. M.  
CENTRO EDUCATIVO



Quillcayuc: Ileana Almeida

Quichuaman ticrachic: José Maldonado

Quillcac: Consuelo Yáñez Cossío

Shuyuccuna: Carlos Iturralde O.  
Cristian Cordero

Derechos reservados

Registro de Derechos de Autor No. ...

Prohibida la reproducción parcial o total

Quito, junio de 1987

## CALLARI

<sup>te x te</sup>  
Cai camuca quichua shimita rimac runacuna-  
man quillcashca can.

Shucniqui cutinmi cai quillcashcaca can,  
chashnataca manarac pipash rurashcachu. Caitaca,  
imashina quichua yuyai cacta ricushpa, imashina  
quichua shimita rimacta uyashpa quillcashca can.

Caica quichua shimita, alli rimancapac alli  
quillcancapacpash, achca mutsurishca can. Shinami  
quichua shimita rimac runaca shutilla ricuc tucun  
ca, quichua shimi llica imashina cacta.

*Sistema de la lengua*

*palabra*

Catirac pancacunapica imashina shimi shuc-  
lla tucucmanta ashtahuan yachai yachachinchic, ya = *lengua*  
paric shimicunapi cai ashtahuan ancha yupai cai- *aglutinante*  
manta, shinamantami puntaca sapi nishcacunamanta  
rimanchic. Cai quipallaca llucshichic yaparic

*sufijos derivados*

---

Camu: "texto", "redacción"  
Shimi llica: "sistema de la lengua"  
Shimi shuclla: "palabra"  
Yaparic shimi: "lengua aglutinante"  
Ancha yupai: "muy importante"  
Llucshichic yaparic: "sufijos derivados"

aullicta = funciones

shimi shuella = palabras

nishcacunamanta rimanchic.

Camupica puntami <sup>Gramática</sup> rimai yachaita ricuchin-  
chic. Quipalla <sup>formas gramaticales</sup> rimai yachai huallpaita jamuta-  
chinchic, chai quipaca maican shinacunata churan  
chic, chashna yachacue shutilla ricuchun, imashi  
na chai quichua shimi llica aullicta.

sistema de la lengua quichua  
palabras

Maican shimi shuellaacunataca mashcashpa  
mashcashpa ñaupá shimi shuella juñupi tarishcan-  
chic. Shinapash shuctacunaca mana tiyarcachu.  
Chaimantami maican shimi shuellaacunataca quichua  
shimimantallatac llucshichishpa huachachi tucur-  
canchic.

Quichua shimica runa yuyai huiñaimanta tu-  
cuita ni tucunmi. Shinapash chaita nincapacca  
achca shimi shuellaacunata mutsurin. Chaimantami  
quichuaca shimi shuellaacunata mirachina can. Qui-  
chuaca achca shimi shuellaayuc cana can.

---

Rimai yachai: "gramática"

Rimai yachai huallpai: "formas gramaticales"

Jamutana: "entender"

Aullina: "funcionar"

Juñu: "conjunto", "reunión"

Quichua shimi shuellacunata quillcashpa,  
shuc jatun pantai tiyacta, chai chayanchic. Chai  
pantaica cai "y", cai "w" maican samaihuan unyai  
cunapash anchuchinmi can. Chaicunata anchuchiman  
tami quichua shimica huacllinpash huaccha tucun-  
pash.

*sonidos  
aspirados*

---

Samai unyai: "sonidos aspirados"

como el turco

Yaparié shimi = lengua aglutinante

## 1.- QUICHUA YAPARIC SHIMI: *Lengua aglutinante*



Quichuaca shuc shimimi shinapa  
pash shuc yaparié shimi nishcami  
cashca.

Shuctac chican shimicunapash  
ñucanchic quichua shimi shinami  
cashca. Chashnami turco nishca shi  
micuna, semita nishca shimicuna,  
indoeuropeo nishca shimicuna, shuc

taccunapash. Chashna cashpapash ñu  
canchic quichua shimipimi ashta-  
huan shutilla chai yaparié nishca-  
ca ricuric cashca.

*lingüista*

Shimi amautacunaca turco  
nishca shimicunami yaparié shimicu  
namanta yalli pacta pacta can nin-  
cuna. Ñucanchic quichua shimi chai  
turco nishca shimihuan paicunapura  
cashcamantami, ñucanchic quichua  
shimitapash yaparié shimi ni tucunchic.

Shinapash, mana ni tucunchicchu,  
ñucanchic quichua shimipash  
turco nishca shimipash chai sapi-  
mantallatac huiñarishca nishpa,  
shinaca mana shuclla sapiyuc shimicunachu  
cashca.

---

Shimi amauta: mishu shimipica "lingüista"  
nincuna.

A. *sistema de signos*  
SHIMI: unancha llicami, chaihuanmi  
ñucanchic yuyaita rurai tu-  
cunchic, ni tucunchic, hui-  
llai tucunchicpash.

*hangua aglutinante*  
YAPARIC SHIMI: caicuna shimi shuc-  
llacunata mirachin-  
cuna, huaquinpi shimi shuc-  
llaman, huaquinpi shimi shuc  
llapac sapiman quipalla yapa  
ricta yapachishpa. Chai qui-  
palla yapariccunaca shuc  
cashca unanchaiyuccunami.

SHUCLLA SAPIYUC SHIMI: shuclla sa-  
pimanta,  
shuc sapimantallatac, huiña-  
rishca shimicunatami shina  
ninchic. Huaquin shimicunaca  
mana chai sapimantallatac  
huiñarishca cashpapash shina  
puracunami.

---

Unancha llica: "sistema de signos:  
Unancha: "signo"  
Unanchai: "significado"  
Shimi shuclla: "palabra"  
Quipa yaparic: "sufijo"

*calen yaparic*

QUICHUA UNANCHACUNA



HUIPALLA



APACHITA



CAI TAPUICUNATA CUTICHIPAI

1.- Imatac shimica can.

la lengua es un sistema, con  
ella expresamos el pensamiento, nos co  
municamos

2.- Imapactac shimica can.

3.- Imatac yaparic shimicuna can.

he palabras que viene con los sufijos que  
se agregan a la raíz, se agregan significados

Sin. lengua es aglutinante

4.- Imamantatac quichua shimipash  
turco nishca shimipash yaparic shimicuna cancuna.

Durazni G. dice que puede existir un  
relación del turco con el quichua  
el turco es lengua aglutinante también

5.- Quichua shimipash turco nishca shimipash shuclla sapiyuc shimicuna cancunachu.

YAPARIC SHIMICUNA

shimi shucllapash  
sapipash

raíz  
mesa

shuclla unanchayuc  
quipa yapariccuna

+ sufijo + sufijo + sufijo  
uma + man  
3

En la confusividad morfológica se observa una secuencia, al comienzo, la palabra independiente se encuentra en subordinada, luego la palabra independiente subordinada, puede convertirse en sujeto

## 2.- SHIMI SHUCLLA PARACHAI CAMACHISHCANTA CHILINAPAC QUIQUIN IMPASH + CHILINA

Shimi shuclla <sup>orden</sup> parachai <sup>ley</sup> camachishcaca cai shi  
nami can: shucniqui / chilinpac quiquin imapash, = *atributo*  
ishcainiqui chilina.

Caica (*lengua aglutinante*) yaparic shimicunamanta ticsimi can.  
Shina:

<del>parachai</del>	ATUC	SHIMI	Ejemplo 1	
	(chilinpac quiquin imapash) +	(chilina) =	ATUC SHIMI	(2 palabras núcleo)
	1	2	1 2	
<i>núcleo</i>	HUASCA	CHACA	Ejemplo 2	
	(chilinpac quiquin imapash) +	(chilina) =	HUASCA CHACA	(Puente de sogá)
	1	2	1 2	
	YURAC	TSAHUAR	Ejemplo 3	
	(chilinpac quiquin imapash) +	(chilina) =	YURAC TSAHUAR	(2 palabras = palabras un puente)
	1	2	1 2	

Parachai: "orden de posición"  
Chilinpac quiquin imapash: "atributo"

Chilina: "núcleo"  
Ticsi: "base", "fundamento"

chilina = mides  
(neologismo)

al primer mides

Shinaca shucniqui chilinapac quiquin imapash  
cana can, ishcainiqui chilina catina can. Chashna-  
mi cai ishcaicunaca paicunapura tantacushpa, shuc  
ashtaita cun. Chai ashtaitami ishcanca nishpa shu-  
tichicrinchic. Sintagma

relación  
(neologismo)



Sintagma de dos  
palabras

palabra

(SHIMI SHUCLLA:) shimimanta yalli u-  
chilla quishpi unan  
chaimi can. Causaimanta shuc huj-  
llaita ñucanchicman cun, sapallami  
ni tucun, mana ima yanapaita mutsu  
rinchu.

Shimi shuclla = palabra (neologismo)

Unanchai: "significado"  
Ashtai: "relación"  
Ishcanca: "sintagma"

*nucleo*

CHILINAPAC QUIQUIN IMAPASH: tauca  
shimi  
shucllacunami cai shina ru-  
rai tucun, maipi cacta, ima-  
shina cacta, imapash cacta  
nisha nincuna. Imashina ña  
nicurcanchic caicuna chilina  
pac ñaupapimi cana can.

*nucleo*

CHILINA: caica chilinapac quiquin  
imapash nishcatami chas-  
quin, shinaca chaipac huasha



Quimsa millma cururu shuc  
huarmiman

QUIMSANCA

pimi cana can.

*Sintagma nucleo*

ISHCANCA: chilinapac quiquin ima-  
pash chilinahuan tanta-  
nacushpami shuc ashtaita  
cun, chaitami ishcanca nin-  
chic.

*Sintagma*

*dis*

Ishcanca nishpaca, ishcai  
shimi shuclla <sup>palabras</sup> <sup>se juntan</sup> tantanacushpa  
shuclla shina tucun nisha  
ninchic.

1

2

*nucleo*

Chilinapac quiquin  
imapash

ISHCANCA

+

*nucleo*

Chilina

Japari shimi = lengua aglutinante

CAI TAPUICUNATA CUTICHIPAI

1.- Imashinatac |shimi shuclla) <sup>palabra</sup> para <sup>orden</sup>  
chai camachishcaca cashca.

Qual es el orden de las palabras

2.- Imatac <sup>nucleo</sup> chilinaca can.

Que es el nucleo

3.- Imatac ~~nucleo~~ chilinapac quiquin ima-  
pash can.

Que es el atributo  
atributo

4.- Imatac <sup>sintagma quiceluc</sup> quichua ishcanca' can.

Que es el sintagma quiceluc (quiceluc)

El sintagma quiceluc o quiceluc  
tiene dos palabras: el nucleo y  
el atributo

jaen urpi. (El nucleo es la palabra  
de sentido central es  
urpi

5.- Caipi <sup>siguientes</sup> catirac |shimi shucllacu <sup>palabra</sup>  
nahuan) ishcancata rurapai:  
Shina:

runa shimi

1 2

urpi	ucu	chuya
cancha	huaira	yacu
pacha	lulun	huasi
inca	causai	sapa
alli	runa	uchilla
shimi	puncu	ñuca

dos palabras

en la primera frase o sintagma "cuchi" es el atributo  
y yuyu el núcleo

Shimi shucllacunaca mana hui  
ñaipac chilinapac quiquin imapash  
chilinapash concunachu. Shinami  
chai shimi shucllacunallatac hua-  
quinpica chilinapac quiquin ima-  
pash canca, huaquinpica chinami  
canca. Chashnami, chai shimi shuc-  
llallatac ishcanapi shucniqui can  
chantaipi cai tucunca. Shuctac ish-  
cancapi ishcaniqui canchantaipi  
cai tucunca. Shinapash, ishcanacu

napi chican unanchaiyuccunami can-  
ca. Chai shimi shucllallatac.

cucha yuyu	culta cucha
1 2	1 2

Ñucanchic cunan rimacuc shi-  
mi shucllacunaca sapihuan quipa  
yaparichuan, ñaupá pachapica ishcai  
shimi shucllacunami carianca, mash-  
cashpaca imashina cashcata tari tu  
cunchicmanmi. Huaquin chashna cash-  
cacunaca tiyanmi. Shina:

sintagma

ISHCANCA: ñaupá pachapica caica  
cashcami: ishcai Inca,  
caihuanca shucman ishcaita nisha  
nic cashca.

URMASHCANI: mana cunanmanta ru-  
rashcata rimanchu. Ñau-  
pa pachapica caica ishcai shimi  
shucllami cashca: URMASHCA + CANI.  
Maican llactacunapica cunancamanmi  
chashca rimanacunrac. (Cajamarca)

|Canchantai: "lugar", "sitio"



✓  
le raiz de la palabra

SAPI: shimi shuellamanta tucui ya-  
parishcacunata anchuchispa  
quipa, imalla puchushcatami  
sapi ninchic.

sufijo

YAPARIC: sapilla saquirichun, tu-  
cui shuetaccuna anchuric

tucuctami yaparic ninchic.

sufijos que se aglutinan

QUIPA YAPARIC: shimi shuellapac  
sapi huashapi yapa  
ric tucuctami, shinallatac  
anchuric tucuctami quipa ya  
paric ninchic.

PUCLLA - HUA - CHI - MU - CRI - CU - NA = SAPI



RICU	+	NA
unanchai		unanchai
pitishca		pitishca
sapi		quipa
		yaparic

---

Sapi: "raiz"

En las siguientes palabras

1.- Caipi catirac shimi shucllacu-  
nahuan ishancata rurapai, shuc  
tac shimi shucllacunata ñaupachishpapash yapachishpapash.  
Chashnami caipi quillcashca  
shimi shucllacunaca chilinapac  
quiquin imapash, chilinapash  
cai tucunca.

urcu	taita	achic
jatun	canpac	alli
mai	llacta	mishqui
shina	cururu	asua
cai	puncha	huarmi
pai	jatun	lliclla
туру	lluqui	panpa
raimi	chaqui	inti

_____	_____
_____	_____
_____	_____
_____	_____
_____	_____
_____	_____
_____	_____
_____	_____

En las palabras siguientes encuentra  
el raíz

2.- Cai catirac shimi shucllacuna-  
pica sapita taripai:

- causashcanquiracmari

\_\_\_\_\_

- imataractac

\_\_\_\_\_

- cayachimuhuacrinqui

\_\_\_\_\_

- surcurachinacuna

\_\_\_\_\_

- pucllahuachimucrina





como en el quechua se <sup>con</sup> forman las palabras  
palabra

### 3.- IMASHINA QUICHUA SHIMIPI SHIMI SHUCLLA TUCUCMANTA

1) UNANCHAI PITISHCA SAPI: ña ni-  
curcan

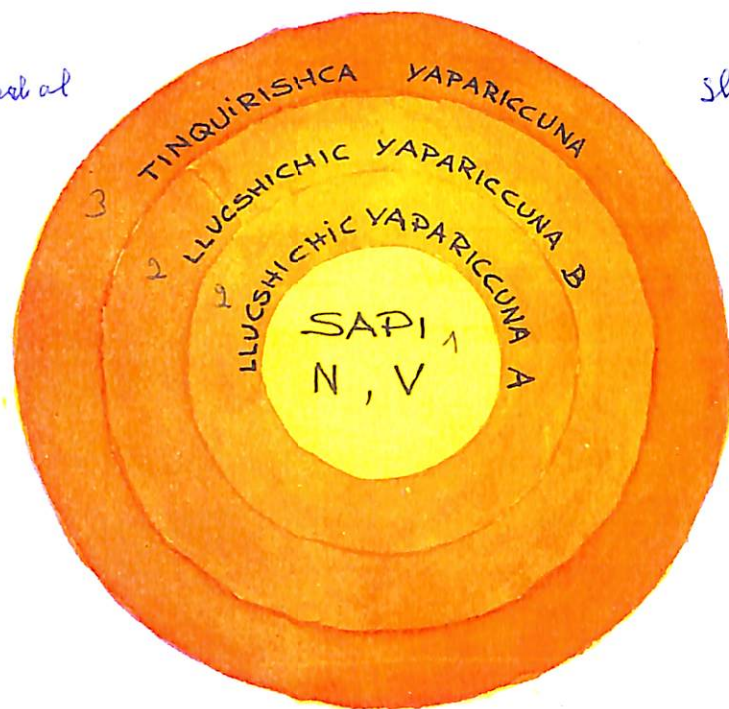
chic, sapicunaca yaparic  
illaccunami, sapicunaca ish  
cai chicanmi: SHUTIMANTA-  
PASH (N), SHIMI CACHICMANTA

PASH (V).

2) ISHCAI LLUCSHICHIC YAPARICCUNA

3) TINUICHIC YAPARICCUNA

- 1 Sapi = raíz nominal o verbal  
2 sufijos derivativos  
2 sufijos derivativos  
3 sufijos flexivos



Shimi caelii = verbo

Shuti: "nombre". Shutimanta cac nincapac  
ca "N"ta churashcanchic. Chashna-  
mi shuti shimi shucllatata uchillaya-  
chishcanchic.

Shimi cachic: "verbo". Shimi cachicmanta  
cac nincapacca "V"ta churashcan-  
chic. Chashnami shimi cachic shimi shuc-  
llataca uchillayachishcanchic.

UNANCHAI PITISHCA SAPI: ñacaman ña  
nicurcan-

chic, caica sapi shinami.

Shina:

puella- (sapi)

puri- (sapi)

SHUTI UNANCHAI PITISHCA SAPI: shu-  
ti-  
man yapariccunatalla chas-  
quincuna. Shina:

huasi (+ cu/ + manta/  
+ cuna/ + ...)

SHIMI CACHIC UNANCHAI PITISHCA SA  
PI: shimi cachicman yapariccunata-  
lla chasquincuna. Shina:

yacha (+ c/ + chi/  
+ shea/ + ...)

LLUCSHICHIC YAPARICCUNA: mushuc  
shimi  
shucllacunata huiñachincuna.

Shina:

-ya

-ni

-yuc

TINQUICHIC YAPARICCUNA: shimi  
shucllacu  
nata, paicunapura, tinqui-  
chin. Shina:

-rca

-manta

-chic



CAI TAPUICUNATA CUTICHIPAI

1.- Imashinatac quichuapi shimi  
shucllacunaca tucun.

2.- Imatac unanchai pitishca sapi-  
ca can.

3.- Imatac shuti unanchai pitishca  
sapica can.

*raig urh al*  
4.- Imatac shimi cachic unanchai  
pitishca sapica can.

5.- Imatac llucshichic yapariccu-  
naca can.

6.- Imatac tinguichic yapariccuna-  
ca can.

---

---

---

---

---

---

---

7.- Muyucunata shuyushpa chaipi sapitapash yaparic  
cunatapash maipi cana cacta churapai.

#### 4.- UNANCHAI PITISHCA SAPI

SHUTI UNANCHAI PITISHCA SAPI (N) *Raíz nominal*

Paicunapura unancha imanta chicanyai tucun,  
shinami: shutichina, shut iman cusca, yupai, shuti  
s! ranti, shimi cachicman cus capash unanchai tucun,  
shimi llicapica shinallat acmi cai tucuicunaca au-  
llirin chashnami:

- SHUTI RANTica runamanta unanchaiyucmi, shutichi-  
napac quipa yaparictami chasquin.

Shina:

ñuca + man (ñuca: shuti ranti)

huasi + man (huasi: shutichina)

- Imai cai shuticuna (SHUTIMAN CUSCA) shutichina  
shinami ishcancaipi cai tucun. Shina:

Mishquica asuapi tiyanni.

(mishquica shutichina  
shinami caipica cacun)

mishqui muru

(mishquica shutiman  
cusca shinami caipica  
cacun)

---

Cusca: "junto"

Aullina: "funcionar"

Imai cana: "cualidad"

- SHUTICHINACA shutiman cusca shinami ishancapi  
cai tucun. Shina:

runa allicai (runaca shutiman cusca  
shinami caipica cacun)

Runaca chacrapi jallmanmi.

runaca (shutichina quipa yapa  
ric shinami caipica ca  
cun)

- SHIMI CACHICMAN CUSACA shutichina quipa yaparic  
cunatami japin. Shina:

huasi + manta

-mantaca (shutichina quipa yapa-  
ric shinami caipica ca  
cun)

ñaupa + manta

-mantaca (shutichina quipa yapa-  
ric cashpapash shimi ca  
chic cuscahuan tinqui-  
rin)

Huaquin carma pacha llapa pachapash shimi

---

Carma pacha: "tiempo"

---

Llapa pacha: "espacio"

cachic cuscacunaca shutichina quipa yapariccunata  
japincuna. Caicunaca uchillayachic llucshichic ya  
pariccunami cancuna. Shina:

cunan + lla

(-lla: uchillai shuti  
china llucshichic ya-  
paricmi, shimi cachic  
cuscahuan, cunan tin-  
quirin)

cai + lla + pi

(-lla: uchillai shuti  
china llucshichic ya-  
paricmi, shimi cachic  
cuscahuan, caihuan,  
tinquirin)

SHUTI: shutichinacuna, shutiman  
cuscacuna, yupaicuna, shuti  
ranticuna, tucui caicunami  
shucllacui nucashca cai tu-  
cun.

Shinapash quichua shimipica  
shimi cachicman cuscaca shu-  
tichina shinami tiscui tucun  
Chashnallatac shucllacui nu-  
cashca cai tucunpash.

SHUTICHINA: cai shimi shucllacuna-  
huanmi runatapash, hui  
huatapash, imacunatapash shu  
tichi tucunchic. ("sustanti-  
vo")

SHUTIMAN CUSCA: imamantapash imai  
caita nisha nin.  
("adjetivo")

YUPAI: chashnami yupanapac shuticu  
nata ninchic. ("numeral")

SHUTI RANTI: shutichinapac unan-

chaita, shutichinapac ranti,  
japictami chashna ninchic.  
("pronombre")

SHIMI CACHICMAN CUSCA: caicunaca  
shimi ca-  
chicman quimirin, shuti cuscaman  
quimirin, shimi cachicta, shuti  
cuscata unanchaita shucman tucun-  
chic. ("adverbio")



Shucllacui: "oración"  
Shucllacui nucashca: "sujeto"  
Tiscuna: "declinar"  
Nichishca: "predicado"  
Yupana "número"  
Tucuna: "modificar"



RURAI CUNATA

1.- Cai catirac shimi shucllacuna-  
pi yapariccunaca shutichina-  
huanchu, shuti rantihuanchu  
tinquirin.nipai:

- canmanta

---

---

- llactamanta

---

---

- tantahuan

---

---

- paihuan

---

---

- huasipac

---

---

- ñucanchicpac

---

---

- allpapi

---

---

---

- cuchaman

---

---



2.- Cai shimi shucllacunaca: yun-  
ca, sacha, shutichinachu shu-  
timan cuscachu, ima cacta shuc  
llacuicunapi nipai:

- Yunca llactaca cunucmi can.

---

---

- Yuncapi cumal asuata ruran-  
cuna.

---

---

---

- Sachapi yuracunaca jatunta  
huiñai.

---

---

- Sacha runaca achca janpi yu-  
yucunatami ricsin.

---



3.- Cai shimi shucllacunaca: huar-  
mi, inti shuticunachu, shuti-  
man cuscachu ima cacta shuclla  
cuicunapi nipai.

- Huarmicunaca llamacunata mi-  
chin.

---

- Huarmipac tupucunaca cullqui  
manta rurashca can.

---

---

- Inti raimica julio quillapi-  
mi.

---

---

- Intimanta achicta rupaita-  
pash chasquinchic.

---



4.- -manta yaparicca shutichina-  
huanchu shimi cachic cuscahuan  
chu, imahuantac tinqurishca  
can nipai.

- Jatun yacumanta shamucuni.

- Naupamanta chai huasipi cau-  
sanchic.

5.- -lla uchillai yaparicca shuti-  
chinahuan chu shimi cachic cus-  
cahuachu tinqurishca can ni-  
pai.

- Mamalla ama cuyaipac shamun-  
qui.

- Chaillapimi allcuca huahuata  
canirca.

6.- Canpac aillumanta quillcapai.

Chashnallatacmi quichua shimipica shimi ca-  
chiccunaca unanchaimantalla chicanyancuna. Quichua  
pica shuc cashca juñinacuimi tiyan.

Shimi cachic unanchai pitishca sapicunata  
huiñaimi tinquirishca huallpaicuna. Chaimantami,  
shuc uchilla sequeta, sapi catiracpi quimichishh  
pa churana canchic. Chashnami quipa yaparic ca-  
ticta yachashun. Shina:

ca- (-na)

huallpa- (-shca, -ni)

juñinacu- (-nqui)

Quichua shimipica unanchai pitishca sapicuna-  
ca huiñaimi ishcai tatiyuc, quimsa tatiyuc. Shina  
pash, huaquinca shuc cashca tatiyucmi. Shina:

sisa = si sa (ishcai tatiyuc)

cai (shuc cashca tatiyuc)

illapa = i lla pa (quimsa tatiyuc)

Quichua shimi shucllacunaca huiñaimi ishcaini

---

Juñinacui: "conjugación"  
Tati: "sílabas"

---

Seque: shuc uchilla quincrai quillcashca  
ta chashna shutichinchic.

qui tatipi pañamanta callarishpa, unyachita shin-  
chiyachin. Shina:

chu qui  
chin chai

Chuqui chinchai ñaupá pa-  
Chapica huillcami cashca.



---

Paña: "lado derecho"  
Unyachi shinchiyachina: "elevar la voz"  
Huillca: "ídolo"

SHIMI CACHIC: shimi shucllacunami  
can. Carma pachapi  
unaipipash shuc ruraita u-  
nanchancuna. Shina:

ahua + na  
aclla + na  
ahuaca + na  
jamu + na

JUÑINACUI: shuc shimi cachicta,  
shuc pachamanta shucta-  
man (ñaupa, quipa, cunan),  
shuc shina caimanta shuctac-  
man, shuc runamanta shuctac  
runacunaman yallichimi can.  
Shina:

micuni (shucniqui ru-  
na, cunan pa-  
cha)  
micunca (quimsaniqui  
runa, quipa pa  
cha)  
micui (ishcainiqui  
runa, camachi)

micuncuna (quimsaniqui  
runacuna, cu-  
nan pacha)  
micurcanchic (shucniqui ru  
nacuna, ñaupa  
pacha)

TATI: tucui unyaicunami shuc cash  
ca unyachi tancaiyuc nisha  
nin.

ISHCAI TATIYUC: shimi shucllaca  
ishcai unyachi  
tancaiyuc nisha nin.

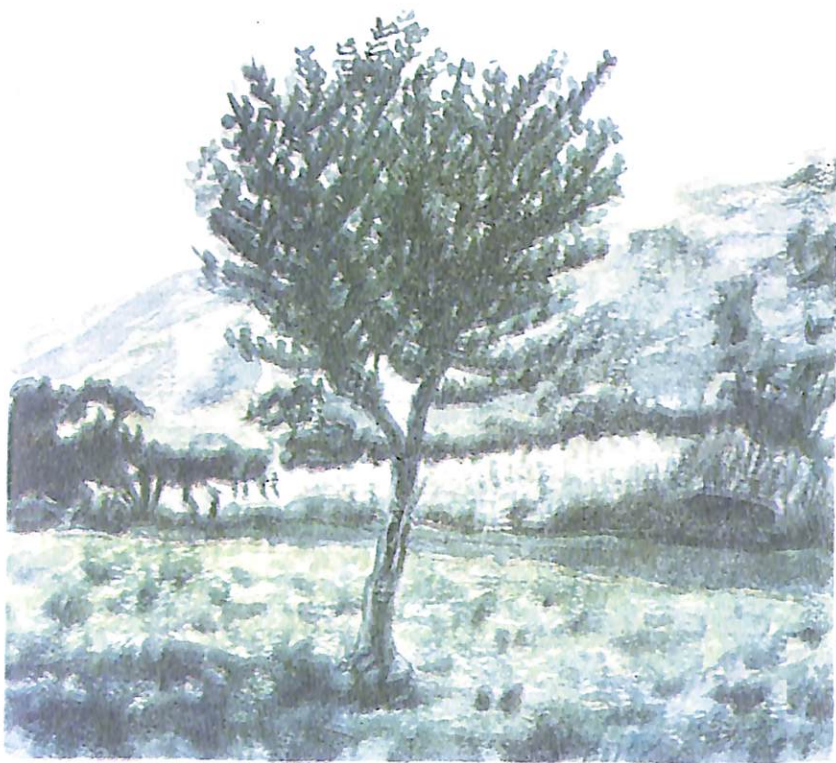
SHUC TATIYUC: shimi shucllaca  
shuc cashca unyachi  
tancaiyuc, nisha nin.

---

Ahuacana: "luchar", "guerrear"  
Jamuna: "entender"  
Unyai: "sonido"  
Unyachi: "voz"  
Unyachi tancai: "golpe de voz"

RUCTU: caihuanca shimi shuellapi  
ishcainiqui tatipi, pañaman  
ta callarishpa unyachita  
shinchiyachin nisha ninchic.

ÑAUCHI: caihuanca shimi shuellapi  
tucuric tatipi, unyachita  
shinchiyachin nisha ninchic  
mi.



---

Ructu: "palabra grave"  
Ñauchí: "palabra aguda"

RURAI CUNATA

1.- Mashna juñinacuita quichua shi  
mipica tiyan.

---

---

2.- Mashna juñinacuita mishu shimi  
pica tiyan.

---

---

3.- Imamantatac quichua shimipica  
shuc uchilla sequeta shimi ca-  
chic sapi huashapica quillcana  
can.

---

---

---

---

---

---

4.- Cai ishcaimanta, maicantac tin  
quirishca huallpaica can. Mai-  
cantac mana tinquirishca huall

paica can.

yanta-  
yanta

---

---

---

5.- Cai catiric shimi shucllacuna  
ta, tatipi raquipai.

pallca

---

tincui

---

ñan

---

pincullu

---

amaru

---

illapa

---

Punasuyu

---

yachachic

---

allpa

---

camachic

---

6.- Imata nisha nin 'chuqui chin-  
chai' nishpaca.

---





## 5.- LLUCSHICHIC YAPARICCUNA

Tucui llucshichic yapariccunaca, sapi ima cacapipash, ticsi ima cacpipash, shutimanta shimi ca chicmanta ishcaimi cancuna:

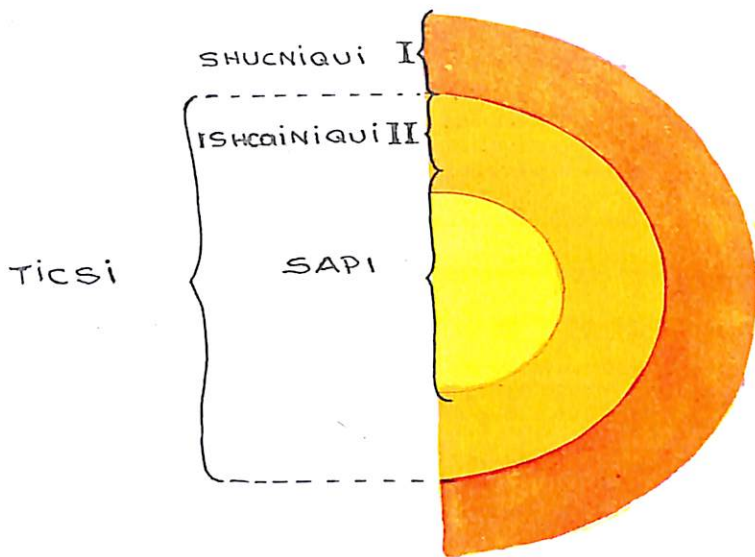
Shucniqui I: Shimi shucllapac juñu rimai yachai llucshichic yaparic,

Ishcainiqui II: Shimi shuclla aulluchic rimai yachai llucshichic yaparic.

Ashtahuan sapiman quimirc yapariccunaca shucniqui I yapariccunami. Cai yapariccunaca shuti sapiman I<sup>N</sup>, shimi cachic sapimanpash IV quimiriccunami.

Shinallatac, ishcainiqui II yapariccuna ruraricta ricui tucunchic. Chashnami shutichinaman, shutichina ticsiman I<sup>N</sup>, shimi ca-

chic sapiman, shimi cachic ticsiman II<sup>V</sup> quimirishpa cancuna.



Shimi shucllapac juñu: "léxico"

Shimi shucllapac juñu rimai yachai llucshichic yaparic: "Afijos derivativos léxico-gramaticales"

Shimi shuclla aullichic: "funcional"

Shimi shuclla aullichic rimai yachai llucshichic yaparic: "Afijos derivativos funcional-gramaticales"

LLUCSHICHIC: tiyashca shimi shuc-  
llamanta mushuc shimi  
shucllacunata huiñachictami  
nisha nin. Quichuapica caicu  
nataca yapariccunata yapa-  
chishpami rurai tucurin. Cai  
cunaca canmi:

1.- Shucniqui I: caicunaca rimai  
yachai yuyaicuna-  
ta nisha nin, callari unanchai  
ca shuctami tucun. Shina:

UMA SAPA: caipica SAPAca:

1. Umaman mushuc ri-  
mai yachai yuyai-  
ta cun.
2. Umaman shuctac u-  
nanchaita cun.

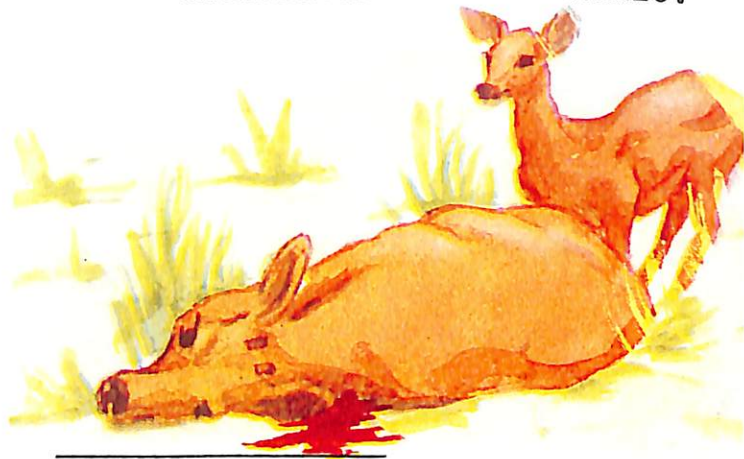
2.- Ishcainiqui II: caicunaca ca-  
llari unanchaita  
llatac huacaichishpa shuctac  
rimai yachai huallpaicunata

rurachin. Shina:

HUAÑUNA: HUAÑUshca taruca  
Caipica -SHCA

1. Shimi cachicta  
shuti cuscaman  
ticrachin.

TICSI: shimi shucllamanta tinqi-  
chic yapariccunata anchu-  
chishca quipa, imalla pu-  
chushcatami ticsi ninchic.



Rimai yachai yuyaicuna: "ideas gramaticales"

Rimai yachai huallpaicuna: "formas gramaticales"

Shucman ticrachina: "convertir"

CAI TAPUICUNATA CUTICHIPAI

1.- Mashna jamuitac llucshichic ya  
pariccunamantaca tiyan.

---

---

---

---

---

2.- Maicancunatac ashtahuan sapi-  
man quimirishca can.

---

---

---

---

---

3.- Shucniqui I yapariccunaca shu-  
ti sapimanchu, shimi cachic sa  
pimanchu quimirin.

---

---

---

---

---

4.- Ishcainiqui II yapariccunaca  
shutichinamanllachu, shimi ca  
chicmanpashllachu quimirincu-  
na.

---

---

---

---

---

5.- Imatac llucshichicca can.

---

---

---

---

---

6.- Maicantac shucniqui I yaparic-  
cunaca can.

---

---

---

---

---

Jamui: "clasificación"

---

---

---

---

---

7.- Maicantac ishcainiqui II yapariccunaca can.

---

---

---

---

---

---

---

---

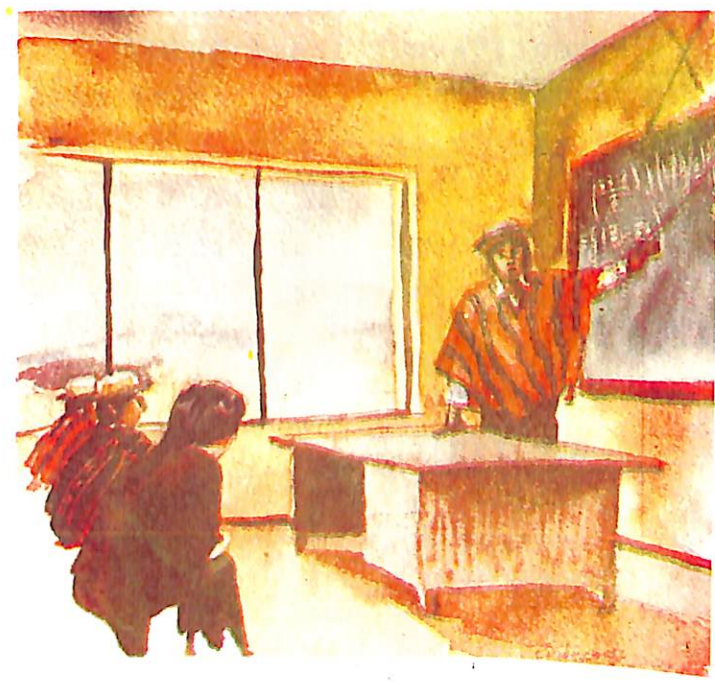
---

---

8.- Ima shimi shucllamantatac URPI LLA llucshin.

9.- Ima shimi shucllamantatac YA-CHACHIC llucshin.

10.- Ima shimi shucllamantatac YU YAI llucshin.



## 6.- SHUCNIQUI I YAPARICCUNA

Cunanca shucniqui I yaparic-  
cunata ashtahuan yachai chayacrin-  
chic. Caicunapashmi ishcaipi raqui-  
rin: I-1, I-2.

Chai I-1 shucman ticrachic ya-  
pariccuna. Ishcaipipashmi raqui-  
rin: IN1, IV1. Cai IN1, cunanca ya-  
chacushunchic.

### SHUTITA SHIMI CACHIC TICSIMAN TICRACHIN IN1

1) -NI yaparic

- tac + -ni- = tacni-

Shuti sapi + -NI-, shimi cachic  
ticsiman ticrachin.

- Yurac callmaca huairahuan hualin  
nin.

achic + -ni- = achicni-  
(achicnina)

- Huahuaca shaicushcamanta anyani-  
cun.

achic = shuti sapi

-NI- yaparic

achicni- = shimi cachic ticsi

- hualin + -ni- = hualinni-

- huac + -ni- = huacni-

- anya + -ni- = anyani-

- culun + -ni- = culunni-



Callma: "rama"

2) -YA- yaparic

Shuti sapi + -YA-, shimi cachic  
ticsimi cun.

jatun + -ya- = jatunya-  
(jatunyana)

jatun + = shuti sapi  
-ya- = yaparic  
jatunya- = shimi cachic ticsi

- achca + -ya- = achcaya-  
(achcayana)

- cuntur + -ya- = cunturya-  
(cunturyana)

- cutu + -ya- = cutuya-  
(cutuyana)

- huirá + -ya- = huiraya-  
(huirayana)

- cushi + -ya- = cushiya-  
(cushiyana)

- Cari runaca cunturyashpa cuitsa-  
ta aparca.

- Cai cuchicunataca huirayachish-  
pa catusha.

Cai quillcashcacunata alli  
alli quillca catishunchic.

- Jatun mayuca tucui pachata huac-  
nicunllami.

- Chai huarmica cutuyashpa uncu-  
rishcami can.

- Chinpa panpapimi achicnicun.

- Cai huanpraca jatunyarishpami ca  
ticun.



LLUCSHICHIC  
YAPARICCUNA

I

TICRA  
CHINA  
I-1

IN<sub>1</sub>

shutimanta shimi cachicman  
(-ni-, -ya-): achicnina, jatunyana

IV<sub>1</sub>

shimi cachicmanta shutiman  
(-i, -c): yuyai, yuyac

IN<sub>2</sub>

uchillayachic  
(-cu, -lla): huasicu, chailla  
jatunyachic  
(-sapa, -pacha): umasapa, jatunpacha

yalli cai  
(-imana): sumaimana

chutai cai  
(-nic, -ma): jahuanic, caima

TUCU-  
CHINA  
I-2

IV<sub>2</sub>

unyachi  
(-chi-, -nacu-, -ri-, -hua-, -pa-):  
yachachini, rimanacun, ñaccharinqui,  
cuhuai, yachapaichic

unai  
(-ra-, -cu-, -cri-, -mu-): shamurana,  
micunchic, ahuacrini, ricumucun



CAI TAPUICUNATA CUTICHIPAI

1.- Maican yapariccunatac shutita  
shimi cachicman tigrachin.

2.- Shucllacuicunata rurapai: shi-  
mi shuclla shuti cacta, chai  
shimi shucllatatac shimi ca-  
chicman tigrashca cactapash.

3.- Cai catirac shucllacuipi shuc-  
man tigrachic yaparicta tari-  
pai: runaca huasimanta caru-  
yan.

4.- -ni- yaparicta churashpa, shi-  
mi cachicman tigrachi, cai ca-  
tirac shuticunata, shinashpa  
shucllacuipi rurapai.

- culun \_\_\_\_\_  
- tsicni \_\_\_\_\_  
- ayau \_\_\_\_\_

5.- -ya- yaparicta churashpa, shi-  
mi cachicman tigrachi, cai ca-  
tirac shuticunata, shinashpa  
shucllacuipi churapai.

- pucru \_\_\_\_\_  
- puncha \_\_\_\_\_  
- rumi \_\_\_\_\_  
- huahua \_\_\_\_\_  
- rucu \_\_\_\_\_  
- puca \_\_\_\_\_

SHIMI CACHICMANTA SHUTIMAN  
IV1

Quichua shimipica, shimi cachicta charishpa -i yaparichuan, -c yaparichuanpash tantarishpa shu ticunatac cunmi. Shina:

1) -I yaparic

Shimi cachic sapi + -I yaparic shutitami cun. Shina:

huañu- + -I huañui

huañu- = shimi cachic sapi

-I = yaparic

huañui = shuti

- yuya- + -i = yuyai
- tarpu- + -i = tarpui
- yapa- + -i = yapai
- raqui- + -i = raqui
- huiña- + -i = huiñai

- Nucanchic yuyaihuan ñaupaman ri-

shun.

- Casa urmashcamanta cai tarpuica mana allichu cashca.
- Aillu llacta raimipi yapaihuanmi cararca.
- Nucanchic runacunamanca allpa raquica mana allichu.
- Huahuacunapac huiñaita ricushunchu.

2) -C yaparic

Shimi cachic sapi + -C yaparic shutitami cun. Shina:

huañu- + -C = huañuc

huañu- = shimi cachic sapi

-C = yaparic

huañuc = shuti

- puri- + -c = puric
- callpa- + c = callpac

- rura- + -c = rurac
- japi- + -c = japic
- quillca- + -c = quillcac

- Callpac huanpraca uncushcami.
- Paica, inti raimimanta quillcac mi cashca.

### SHUCMAN TUCUCHIC YAPARICCUNA

I-2

Cai tucuchic yapariccunaca  
ishcaipipashmi raquirin: IN<sup>2</sup>, IV<sup>2</sup>.

Chai IN<sup>2</sup> shutihuanlla tinqi

rin. Chai IV<sup>2</sup>, shimi cachichuan-  
lla tinquirin. Cunanca, cai cuti-  
chic yapariccunata alli alli ricu  
shunchic.

### UCHILLAYACHIC

IN<sup>2</sup>

Caimanca, tucui yapariccuna  
shuti unanchai pitishca sapita  
shucman tucuchiccunami tinquirin.  
Shinapash, shuti unanchai pitishca  
sapitaca mana shimi cachic ticsi-  
man ticrachinchu.

Cai shinami, uchillayachin  
yapariccuna.

Shinapash, -lla yaparicca

mana llucshichic yaparicllachu,  
quipamanmi caimantaca ashtahuan  
yachai chayashun.

UCHILLAYACHIC: caicunaca shuti u-  
nanchaita pishiya-  
chin. Shina:

huahulla utca shamunquí  
mamacu causanquichu  
allculla caipi tiyan

CAI TAPUICUNATA CUTICHIPAI

1.- Maican yapariccunatac shimi ca  
chicta shutiman tigrachin

---

---

---

---

---

---

---

---

2.- Shucllacuicunata rurapai: shi-  
mi shuclla shimi cachic cacta,  
chai shimi shucllatallatac shu  
timan tigrashca cactapash.

---

---

---

---

---

---

---

---

3.- Maicantac shuti unanchai pishi  
yachic cashcata quillcapai.

---

---

---

---

---

---

---

---

---

---



Jahuari: "cuento", "fábula"

UCHILLACHICPASH JATUNYACHICPASH YAPARICCUNA

IN2

1) -CU yaparic

Shutichina unanchai pitishca sa  
pi + -CU, shutichina ticsitami  
cun.

churi + -cu = churicu

churi = shutichina unanchai pi-  
tishca sapi

-CU = uchillayachic shucman tu-  
cuchic yaparic

churicu = shutichina ticsi

- allcu + -cu = allcucu

- cusa + -cu = cusacu

- llacta + -cu = llactacu

- camari + -cu = camaricu

- urpi + -cu = urpicu

- Allcuca cushicuimantami can  
shamucpi, chupata cuyuchin,

- Nachu llactacuman ticranquichic.

- Nuca panicuman puca huallcata  
carasha nini.

2) -LLA yaparic

Shutichina unanchai pitishca sa  
pi + -LLA, shutichina ticsitami  
tucun.

chai + -lla = chailla

chai = shutichina unanchai pi-  
tishca sapi

-LLA = uchillayachic shucman  
tucuchic yaparic

chailla = shutichina ticsi

- cushi + -lla = cushilla

- chihuil + -lla = chihuilla

- huaman + -lla = huamanlla

- taita + -lla = taitalla

- pani + -lla = panilla

- Tushuc runacunaca achca cushilla mi carca.
- Huamanlla cushamanta urmarca.
- Taitalla utca cutimunqui, ama unayanquichu.

Cai shina huallpaicuna tiyan pashmi: shuti unanchaita jatunya-chin, shutipac unanchaita chutai cachic, imai maitapac unanchaita chutai cachicpash.

Quichuapi unanchaita jatunya chincapacca mana yapariccuna tiyan chu. Chaita rurancapacca ishcai yanapac shimi shucllacunami tiyan. Caicunaca manarac yapariccuna canchu, mana sapalla quishpi shimi shucllacunapash canchu.

Chai ishcai yanapac shimi shucllacunaca sapapash pachapash cancunami. Chaicunahuanmi shutichi napac unanchaita jatunyachi tucunchic.

### 3) -SAPA yaparic

Shuti unanchai pitishca sapi +  
-SAPA, shuti ticsimi tucun.

ñahui = shuti unanchai pitishca sapi

-SAPA = jatunyachic shucman tucuchic huallpai

ñahuisapa = shuti ticsi

- siqui + -sapa = siquisapa

- aicha + -sapa = aichasapa

- uma + sapa = umasapa

- quiru + -sapa = quirusapa

- sinca + -sapa = sincasapa

- Cai huarmica siquisapapash chuchusapapashmi can.

- Taita Pachuca huicsasapa runami can.

- Chai cuitsaca umasapami can.

---

Imai maita: "dirección"  
Chutai cai: "intensidad"

4) -PACHA yaparic

Shuti unanchai pitishca sapi +  
-PACHA, shuti ticsimi tucun.

ñaupā + -pacha = ñaupapacha

ñaupā = shuti unanchai pitishca  
sapi

---PACHA = jatunyachic shucman tu  
cuchic huallpai

ñaupapacha = shuti ticsi

- huiñai + -pacha = huiñaipacha

- cai + -pacha = caipacha

- ucu + -pacha = ucupacha

- chai + -pacha = chaipacha

- chushac + -pacha = chushacpacha

- Caipachapi runacunami causancu-  
na.

- Huiracuchacunaca janacpachapi  
tiyancuna.

- Ucupachapica supaicunami tiyancu  
na.

Cunanca, cai shimicunata  
chinapurashun:

- sapa inca

- umasapa

- huaillasapa

- pacha mama

- chushacpacha

- pacha cutic

Ricuichic pacha shimi shuc-  
llahuan shuclla tucushpa tinquirin  
mi. Shinami, yachashun pachaca ya-  
napac shimi shuclla cacta, mana  
quishpi shimi shucllacuna cacta,  
shina carma pacha, llapa pacha-  
pash chaipica ishcanami tiyan.  
Chaimantami, mana tinquirin. Shi-  
nami, pachaca chilina carma pa-  
chapash llapa pachapash chilina  
pac imapashmi.

---

Carma pacha: "tiempo"

Llapa pacha: "espacio"

YANAPAC SHIMI SHUCLLA: huaquin shi  
mi shuclla-  
cunata. shina pacha sapapash  
shutipac huashapi churarin.  
Chaipi cacpica, mana quishpi  
shimi shucllacunachu. Yana-  
pac shimi shucllacunami. Shi  
na cacpica huallpaica mana  
shucman tucunchu. Shinapash,  
paicunapac unanchaica shuc-  
man tucunmi. Shina

Pacha: pailla cashpaca, pai  
pac unanchaica tucui ima ti  
yasheata nisha nin.

Chushac-pacha: pachaca shuc  
shutipac huashapimi paipac  
unanchaica pacta pacta ni-  
sha nin.





CAI TAPUICUNATA TICRACHIPAI

1.- Quichuapica, maicantac shuti unanchaita uchillayachi yapariccunaca can. Shucllacuicunata cupai. \_\_\_\_\_  
\_\_\_\_\_  
\_\_\_\_\_  
\_\_\_\_\_  
\_\_\_\_\_  
\_\_\_\_\_  
\_\_\_\_\_

2.- Maican yanapac shimi shucllacunatac shuti unanchaita jatunya chincuna. Shucllacuicunata cupai. \_\_\_\_\_  
\_\_\_\_\_  
\_\_\_\_\_  
\_\_\_\_\_  
\_\_\_\_\_  
\_\_\_\_\_  
\_\_\_\_\_

3) Catirac shimi shucllamanta, unanchaita uchillayachisca shimi shucllata, llucshichipai.

- huanpra \_\_\_\_\_
- huacra \_\_\_\_\_
- huarmi \_\_\_\_\_
- shuncu \_\_\_\_\_
- maqui \_\_\_\_\_
- atallpa \_\_\_\_\_
- cai \_\_\_\_\_
- ushi \_\_\_\_\_
- sara \_\_\_\_\_

4) Catirac shimi shucllamanta, unanchaita jatunyachishca shimi shucllata, llucshichipai.

- cunca \_\_\_\_\_
- punta \_\_\_\_\_
- shimi \_\_\_\_\_
- shaicushca \_\_\_\_\_
- jatun \_\_\_\_\_
- mana \_\_\_\_\_
- rinrin \_\_\_\_\_
- sinca \_\_\_\_\_
- millma \_\_\_\_\_
- chaqui \_\_\_\_\_

5) Shuyupaichic.

Allcucuna huacacun.

Huahuaca tantacuta micucun.

Llamaca millmasapami cashca.

Mamaca huahuasapa can.

YALLI CAIPASH CHUTAI CAIPASH YAPARICCUNA

IN<sub>2</sub>

Shuctapash tiyanmi: caicuna-  
ca imai cai shutimanta yalli caita  
nisha nin.

1) -IMANA yaparic

Cai yaparic ishcai yapariccuna  
tinquirishcami can.

Chashna:

-I- + -MANA = -IMANA, shuclla  
shina ya-  
paricta yuyarin.

ima + -imana = imaimana

ima = shuti unanchai pitishca  
sapi

-IMANA = yalli cai shucman tucu  
chic yaparic

imaimana = shuti ticsi

- llaqui + -imana = llaquimana

- yalli + -imana = yallimana  
- millai + -imana = millaimana  
- yachai + -imana = yachaimana  
- sumac + -imana = sumaimana

- Canca ñucata yallimana rimanqui.  
- Llaquimana sara chacraca chaqui-  
ricunmi.  
- Imaimana nanaihuan mana piman cu  
yaita cui tucuchinchu.

Achca yupaimi imashina ñaupá  
pachapi rimac carca. Imaimana Hui-  
racucha nishpa, cashna nishpaca ya  
lli cai cac (Dios) nisha nic carca.

2) -MA yaparic

Na nicurcanchic quichuapica shu  
ti unanchaita chutai cachic ya  
pariccuna tiyanmi.

cai + -ma = caima

cai = shuti unanchai pitishca

sapi

-MA = chutai cachic shucman tucuchic yaparic

caima = shuti ticsi

- puca + -ma = pucama

- ñuca + -ma = ñucama

- cuyac + -ma = cuyacma

- amaru + -ma = amaruma

- ucupacha + -ma = ucupachama

- Taitaca piña piñama ricurimurca.

- Huanpraca sumactacma taquicun

- Nucama millmasapa llamacuta amucrini.

### 3) -NIC yaparic

Chashnallatac imai maitata chutai cachic yaparicca caimi can.

Shina:

jahua + -nic = jahuanic

jahua = shuti unanchai pitishca

sapi

-NIC = imai maita shucman tucuchic yaparic

jahuanic = shuti ticsi

- huasi + -nic = huasinic

- urai + -nic = urainic

- mai + -nic + -man = mainicman

- cai + -nic = cainic

- jana + -nic = jananic

- Maipitac causanqui.

Chai uranicpicmi causani

- Urpicu cainicman pahuashpa shamucun.

- Tantanacuncapac, mainicmanshi rina canchic.

---

Ancha yupai: "muy interesante"  
Chutai cachic: "enfatzador"  
Imaimana: "ser supremo"

YALLI CAI SHUTI: shuti cuscacunami  
unanchaita mai  
chutai caihuanpacha nishami  
nin



CAI TAPUICUNATA TICRACHIPAI

1.- Imashinatac quichuapica yalli  
caitaca nirin. Shuc shucllacui  
pi yalli caita churapai.

---

---

---

---

---

---

---

---

2.- Maican yaparictac shuti unan-  
chaita chutai cachin. Shuc  
shucllacuipi chaita churapai.

---

---

---

---

---

---

---

---

3.- Maican yaparictac shuti unan-  
chaita imai caita chutai ca-  
chin. Shuc shucllacuipi chaita  
churapai.

---

---

---

---

---

---

---

---

4.- Shucllacuita rurapai cai cati-  
raccunahuan.

- llaquimana \_\_\_\_\_

---

---

---

---

---

---

---

---

- sumaimana \_\_\_\_\_

---

---

---

---

---

---

---

---

- yallimana \_\_\_\_\_

---

---

---

---

---

---

---

---

- imaimana \_\_\_\_\_

---

---

---

---

---

---

---

---

- millaimana \_\_\_\_\_

---

---

---

---

---

---

---

---

5.- Shucllacuita rurapai cai cati-  
raccunahuan.

- canma \_\_\_\_\_

- yuracma \_\_\_\_\_

- cuscuma \_\_\_\_\_

- illapama \_\_\_\_\_

- casama \_\_\_\_\_

- umiñana \_\_\_\_\_

- curima \_\_\_\_\_

Umiña: "piedra preciosa"

6.- Shucllacuita rurapai cai cati-  
raccunahuan.

- chainic \_\_\_\_\_

- jahuanic \_\_\_\_\_

- ayahuasinic \_\_\_\_\_

- mainicpi \_\_\_\_\_

- quincrainic \_\_\_\_\_

- mainicman \_\_\_\_\_

- uranic \_\_\_\_\_

- utcanic \_\_\_\_\_



7.- Ricsishca shimicunahuan mushuc jahuarita quillcapaichic: -ma, -nic, -imana yapariccunata churapaichic.



UNYACHIPASH UNAIIPASH YAPARICCUNA

IV<sub>2</sub>

Caicunaca shimi cachic sapi  
unanchaita shucman tucuchic yapa-  
riccunami. Shinapash shimi cachic

sapita mana shuti ticsiman ticra-  
chinchu. Caipimi unyachi yaparic-  
cuna, unai yapariccunapash.

UNYACHI YAPARICCUNA

1) -CHI-, raicui yaparic

rima- + -chi- = rimachi-

(rimachina)

rima- = shimi cachic unanchai  
pitishca sapi

-CHI- = unyachi shucman tucu-  
chic yaparic

rimachi- = shimi cachic ticsi

- huiña- + -chi- = huiñachi-

- jatari- + -chi- = jatarichi-

- ami- + -chi- = amichi-

- uclla- + -chi- = ucllachi-

- cuyu- + -chi- = cuyuchi-

- huañu- + -chi- = huañuchi-

- tapu- + -chi- = tapuchi-

- Uchilla huahua urmacpimi, mamaca  
utca jatarichirca.

- Camchashpaca, cutin cutin sarata  
cuyuchina canqui, ama rupachun.

- Chaitaca ña mana munanichu, ami-  
chircami.

- Atallpata ucllachishcamanta,  
tauca chuchicuna llucshishca.

---

Unyachi: "voz" (en gramática)

Raicui: "causativo"

2) -NACU catinacui yaparic

ricu- + -nacu- = ricunacu-  
(ricunacuna)

ricu- = shimi cachic unanchai  
pitishca sapi

-NACU- = unyachi shucman tucuchic yaparic

-ricunacu- = shimi cachic ticsi

- shuya- + -nacu- = shuyanacu-

- yanapa- + -nacu- = yanapanacu-

- cani- + -nacu- = caninacu-

- cunca- + -nacu- = cuncanacu-

- maca- + -nacu- = macanacu-

- ni- + -nacu- = ninacu-

- caya- + -nacu- = cayanacu-

- Huauquipurami yancamanta macanacurcacuna.

- Ricsishcacunaca ashalla carma pa chahuan ña cuncanacucuncuna.

- Cusa huarmica huahuacuna shamuncacamanmi shuyanacurcacuna.

- Imashina ninacurcanchic ruranca-

pac, ama pimanpash huillachin-  
quichu.

3) -RI-, rirpui yaparic

ñaccha- + -ri- = ñacchari-  
(ñaccharina)

ñaccha- = shimi cachic unanchai  
pitishca sapi

-RI- = unyachi shucman tucuchic yaparic

ñacchari- = shimi cachic ticsi

- asi- + -ri- = asiri-

- punqui- + -ri- = punquiri-

- sama- + -ri- = samari-

- riccha- + -ri- = ricchari-

- raqui- + -ri- = raquiri-

- arma- + -ri- = armari-

- mailla- + -ri- = maillari-

---

Catinacui: "recíproco"  
Rirpui: "reflexivo"

- Cuitsapura tantanacushpaca, ach-  
catami asirinacurcacuna.
- Na punchayan richarishunchic.
- Huahuaca patamantami urmarca,  
chaimantami cuncurica punquirir-  
ca.
- Nahui`mapayacpimi, maillarircani.

4) -HUA-, shucniqui ishcaiqui ru  
namanta rirpui yaparic

cara- + -hua- = carahua-  
(carahuana)

cara- = shimi cachic unanchai  
pitishca sapi

-HUA- = unyachi shucman tucu-  
chic yaparic

carahua- = shimi cachic ticsi

- tanca- + -hua- = tancahua-
- picha- + -hua- = pichahua-
- shuya- + -hua- = shuyahua-
- yuyachi- + -hua- = yuyachihua-
- saqui- + -hua- = saquihua-
- raqui- + -hua- = raquihua-

- taqui- + -hua- = taquihua-

- Cuyana cashpa cuyahuai.

- Saquina cashpa, saquihuai.

- Cuihuanmi huairashcata taitaca  
pichahuarca.

- Shuyahuanqui, ishcantin llacta-  
man cutincapac.

5) -PA-, yupaichai yaparic

ca- + -pa- = capa-  
(capana)

ca- = shimi cachic unanchai pi-  
tishca sapi

-PA-, unyachi shucman tucuchic  
yaparic.

capa- = shimi cachic ticsi

---

Shucniqui ishcaiqui rirpui: "reflexivo  
de primera  
y segunda persona  
Yupaichai: "Respeto", "aprecio", "corte-  
sía"

- shamu- + -pa- = shamupa-
- cupa- + -pa- = cupapa-
- yaicu- + -pa- = yaicupa-
- uya- + -pa- = uyapa-
- micu- + -pa- = micupa
- tari- + -pa- = taripa-
- ri- = -pa- = ripa-

- Paimi ñuca ushushi capan.
- Huasiyuc, huasiyuc caipi canqui.  
Ari, shamupai. Caiman yaicupai.
- Yachachic ima nicta uyapanqui.  
Ana shina canquichu.
- Ahuacman cururuta apamushpa cupanquichic.

UNYACHI: shimi cachicmanta shuc ri  
mai yachai huallpaimi. Cai  
 ca shuellacui nucashca rurai-  
 huan ashtaita nisha nin. Cai  
 cunaca canmi:

- 1.- Raicui unyachi: shuella-  
 cui nucashca shimi ca-  
 chic ruraita rurachicpi.

2. Catinacui unyachi: nu-  
 cashcapuracuna shimi ca-  
 chic ruraita catinacuc-  
pi.

3. Rirpui unyachi: nucashca  
 paillatac shimi cachic  
 ruraita rurashpa cashqui  
ricpi.

4. Shucniqui ishcaiqui  
 rirpui unyachi: shimi ca-  
 chic ruraita ishcaipura  
 (shucniqui, ishcaiqui)  
 ruraita rurai tucucpi.

5. Shina cai unyachi: ima-  
 shina nucashca shimi ca-  
 chic ruraita, yupaichai-  
 ta nicpi.

---

Rimai yachai huallpai: "formas gramaticales"

Ashtai: "relación"

Catina: "imitar"

Shina cai: "modalidad"

CAI TAPUICUNATA TICRACHIPAI

1.- Maicantac raicui yaparicca can.  
Shuc shucllacuipi churapai.

---

---

---

---

2.- Maicantac catinacui yaparicca  
can. Shuc shucllacuipi chura-  
pai.

---

---

---

---

3.- Maicantac rirpui yaparicca can.  
Shuc shucllacuipi churapai.

---

---

---

---

4.- Maicantac shucniqui ishcaini-  
qui rirpui yaparicca can. Shuc

shucllacuipi churapai.

---

---

---

---

5.- Maicantac shina cai, yupaichai  
yaparicca can. Shuc shucllacui-  
pi churapai.

---

---

---

---

6.- Cai catirac shimi cachic unan-  
chai pitishca sapipi raicui ya-  
paricta churashpa shucllacuita  
quillcapai.

caya- \_\_\_\_\_

llaqui- \_\_\_\_\_

mancha- \_\_\_\_\_

mana- \_\_\_\_\_

ricsi- \_\_\_\_\_

- 7.- Cai catirac shimi cachic unan-  
chai pitishca sapipi catinacui  
yaparicta churashpa shucllacui  
ta quillcapai.

aclla- \_\_\_\_\_

japi- \_\_\_\_\_

tari- \_\_\_\_\_

armachi- \_\_\_\_\_

macha- \_\_\_\_\_

- 8.- Cai catirac shimi cachic unan-  
chai pitishca sapipi rirpui ya  
paricta churashpa shucllacuita  
quillcapai.

quimi- \_\_\_\_\_

chura- \_\_\_\_\_

chinca- \_\_\_\_\_

aspi- \_\_\_\_\_

paqui- \_\_\_\_\_

- 9.- Cai catirac shimi cachic unan-  
chai pitishca sapipi shucniqui  
ishcainiqui runamanta rirpui  
yaparicta churashpa shucllacui  
ta quillcapai.

huatucu - \_\_\_\_\_

tapu- \_\_\_\_\_

huila- \_\_\_\_\_

shuhua- \_\_\_\_\_

apa- \_\_\_\_\_

10.- Cai catirac shimi cachic unan  
chai pitishca sapipi yupaichai  
yaparicta churashpa shucllacui  
ta quillcapai.

mañachi- \_\_\_\_\_

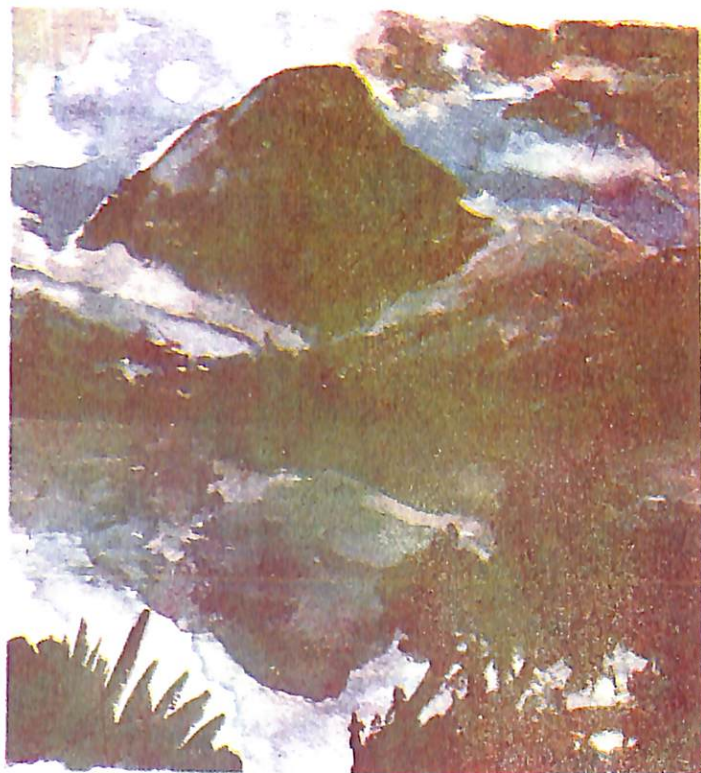
ni- \_\_\_\_\_

upia- \_\_\_\_\_

micu- \_\_\_\_\_

cuta- \_\_\_\_\_

11.- Quiquincunaman cai yachacuica  
ñucanchic quihua shimi cuncash  
camanta yanapacrinchu. Imashi-  
na cacta quillcapai.



UNAI YAPARICCUNA  
IV2

Na ricurcanchic unyachi yapa  
riccunata. Cunanca unai yapariccu-  
nata ricushun. Caicunaca canmi:

1) -RA-, chutai cachic yaparic

ricu- + -RA- = ricura-  
(ricurana)

ricu- = shimi cachic unanchai  
pitishca sapi

-RA- = unai shucman tucuchic ya  
paric

ricura- = shimi cachic ticsi

- aisa- + -ra- = aisara-
- chapa- + -ra- = chapara-
- capari- + -ra- = caparira-
- ashna- + -ra- = ashnara-
- uya- + -ra- = uyara-
- huacta- + -ra- = huactara-
- pucu- + -ra- = pucura-

- Mayu chinpapi caccuna uyachun ca  
parirai.
- Uyaranqui pipash huasiman yaicun  
man.
- Ashnaranqui, millai micunatarac  
caranman.
- Churanacunata rumipi huactaran-  
qui mapa llucshincacaman.

2) -CU-, catichic yaparic

shamu- + -CU- = shamucu-  
(shamucuna)

shamu- = shimi cachic unanchai  
pitishca sapi

-CU- = unai shucman tucuchic ya  
paric

shamucu- = shimi cachic ticsi

---

Unai: "aspecto"  
Chutai cachic: "intensidad"  
Catichic: "continuativo"



- yanu- + -cu- = yanucu-
- chucchu- + -cu- = chucchucu-
- jancha- + -cu- = janchacu-
- huata- + -cu- = huatacu-
- yapu- + -cu- = yapucu-
- jallma- + -cu- = jallmacu-
- yacha- + -cu- = yachacu-

- Ricsishcacuna yarcachinca yuyashh  
pami apita yanucurcanchic.
- Tutamantapachami yapucunqui,  
chaimantami ña shaicushca canquñ.
- Chiri yacupi armarimantami chuc-  
cnucunqui
- Huanpracunaca cai huatami yacha-  
cuncapac yaicurca.
- Tucui tutami paica janchacurca,  
nachu.

### 3) -CRI-, ñaupachic yaparic

tarpu- + -cri- = tarpucri-  
(tarpucrina)

tarpu- = shimi cachic unanchai  
pitishca sapi

-CRI- = unai shucman tucuchic  
yaparic  
tarpucri- = shimi cachic ticsi

- miticu- + -cri- = miticucri-
- yuya- + -cri- = yupacri-
- llanca- + -cri- = llancacri-
- rina- + -cri- = rimacri-
- mucha- + -cri- = muchacri-
- quillca- + -cri- = quillcacri-
- mutqui- + -cri- = mutquicri-
- Misi ricumucricpimi, ucuchacuna-  
ca miticucrircacuna.
- Shuc llama chincashca yuyashpa-  
mi, shuc llaman yupacrinchic.
- Mincapica ñanta pascancapacmi  
llancacricuncuna.
- Tantanacuipi alli alli rimacrin-  
qui.
- Cai tantanacuimanta quillcacrin-  
qui.

---

Janchacuna: "estar con la boca abierta"

4) -MU-, cutipai yaparic

micu- + -MU- = micumu-  
(micumuna)

micu- = shimi cachic unanchai  
pitishca sapi

-MU- = unai shucman tucuchic ya  
paric

micumu- = shimi cachic ticsi

- cacha- + mu- = cachamu-

- apa- + -mu- = apamu-

- ticra- + -mu- = ticramu-

- ishcu- + -mu- = ishcumu-

- catu- + -mu- = catumu-

- tacsha- + -mu- = tacshamu-

- japi- + -mu- = japimu-

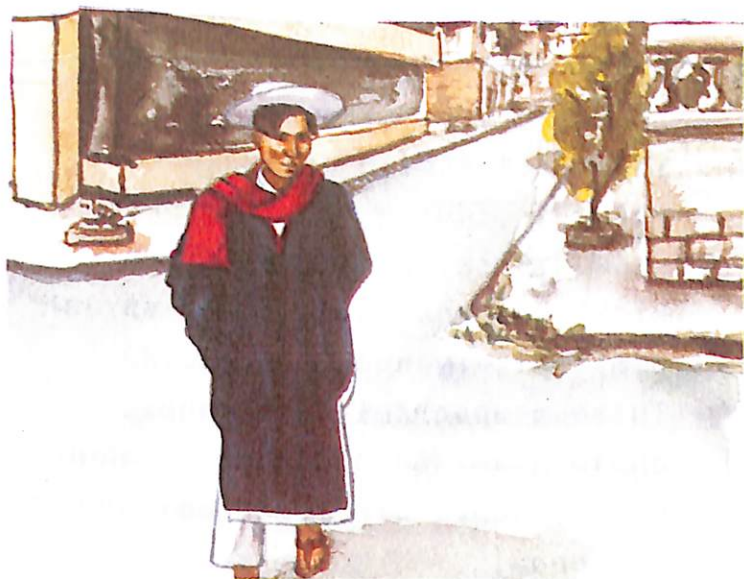
- Hùira cuchicunata catumushpa ti-  
cramuni.

- Imatatac canpac ailluca canman  
cachamurca.

- Pihuantac cai jatun quiruta apa-  
murcanqui.

- Tucuitachu ishcumurcanqui.

- Tucui huihuacunata japimunqui-  
chic.



UNAI: rimai yachai huallpaimi can.  
Shimi cachic ruraita ninca-  
pacmi.

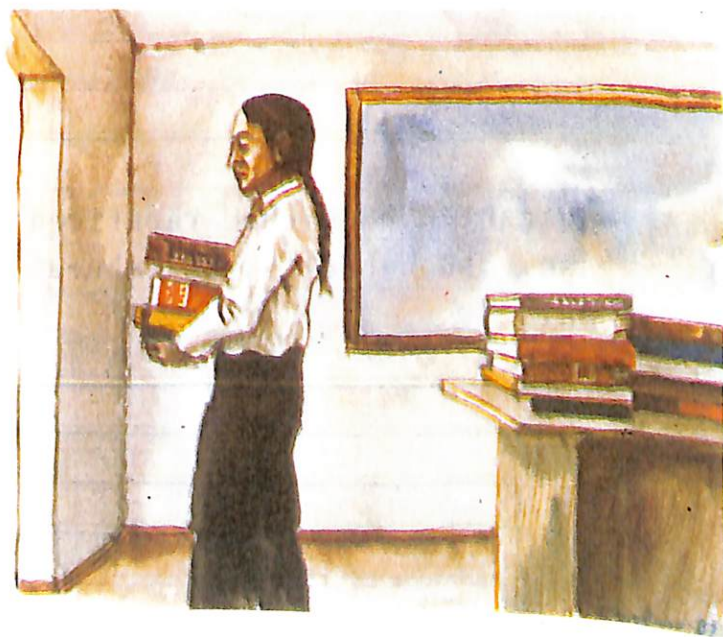
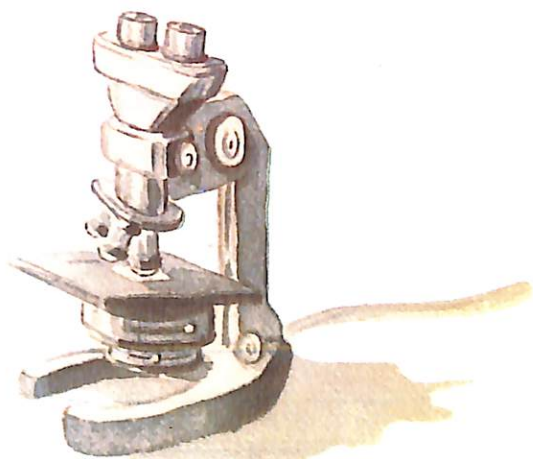
Chashna: imashina chai rurai  
ta ruraran, ruracun, rura-  
crin, ruramun.

-RA      ◯══>◯  
          ◯══>◯  
          ◯══>◯

-CU- : ◯══>◯≈>◯══>◯══>

-CRI-: ═══>◯

-MU- : ◯↻◯



CAI TAPUICUNATA TICRACHIPAI

1.- Maicantac chutai cachic yaparicca can. Shuc shucllacuipi churapai.

---

---

---

---

2.- Maicantac catichic yaparicca can. Shuc shucllacuipi churapai.

---

---

---

---

3.- Maicantac ñaupachic yaparicca can. Shuc shucllacuipi churapai.

---

---

---

---

4.- Maicantac cutipai yaparicca can. Shuc shucllacuipi churapai.

---

---

---

---

5.- Cai catirac shimi cachic ticsi cunapi maican yapariccuna (-ra-, -cu-, -cri-, -mu-) alliaccta churashpa, shucllacuicunata quillcapai.

- raura-

---

---

---

---

---

---

---

llipia-

---

---

---

---

---

---

---

---

---

---

- junta-

---

---

---

---

---

---

---

---

---

---

- pillu-

---

---

---

---

---

---

---

---

- siri-

---

---

---

---

---

---

---

---

---

---

- tullpu-

---

---

---

---

---

---

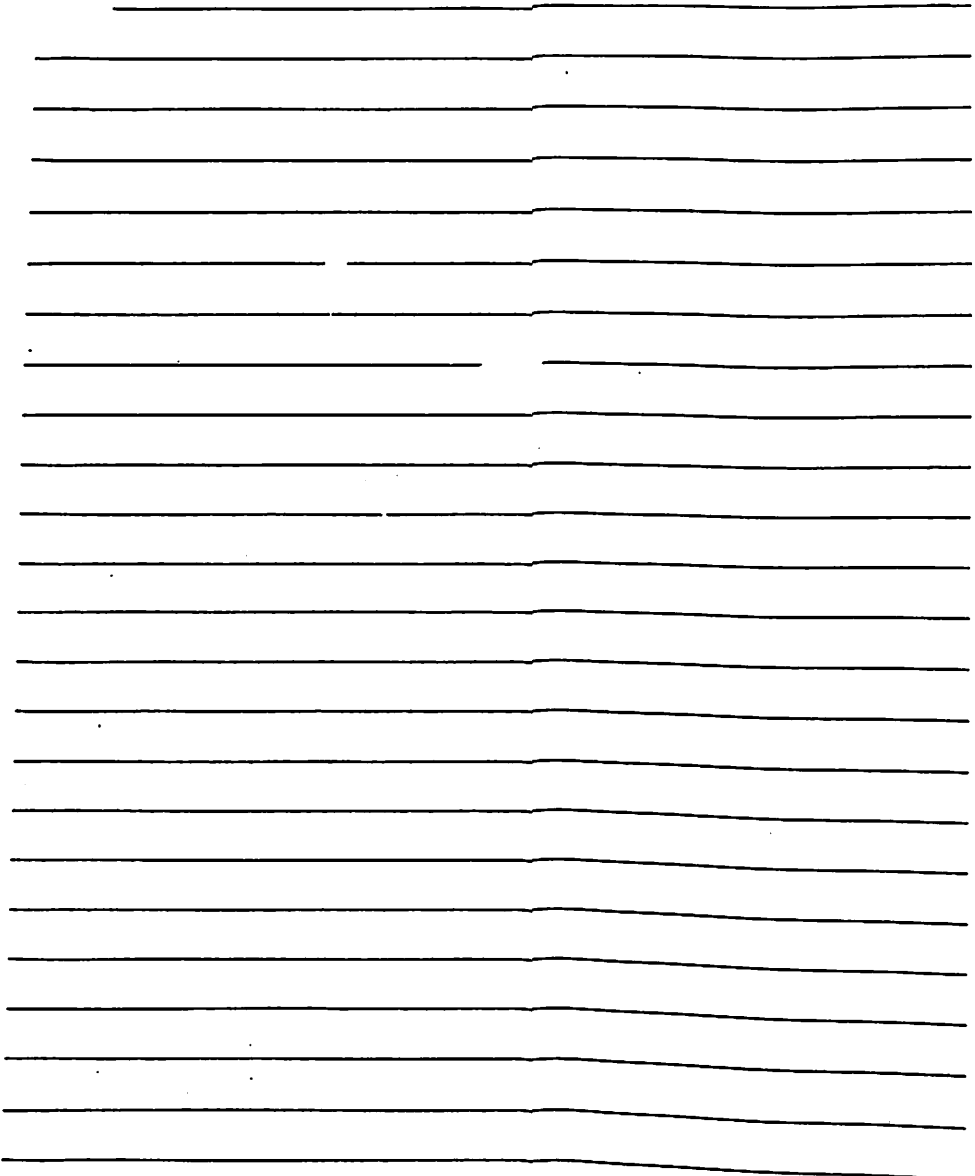
---

---

---

---

6.- Naupa jahuaricunamanta cai yapariccunahuan  
quillcapaichic.



7.- Cai catirac quillcashcacunapi  
-ra, -cu, -ri, -mu yapariccura  
ta tarishpa paipac uraipilla-  
tac uchilla sequeta churapai -

samaisapa callparacushpa  
imatapash tarimunchic  
ai shinacha causarinca  
ai shinacha huañurinca.

- Apunchau punchaca arahuapi car-  
canchicmi. Chaipimi sumaimana ta  
quicunata uyaracurcanchic. Tamia  
shina taquicunata uyararcanchic.  
Ña taquic runacuna taquicunata  
tucuchucricucpi llucshircanchic.  
Quipalla huasiman ticramurcan-  
chic.

- Tarpuna carma pacha chayamucpica  
tarpuccunaca chacraman rincuna,  
huacracunata apashpa. Tucui all-  
pata allichishpa, allpa ñutulla  
cacpi muru muyuta tarpui calla-  
rin. Ima muru cacpipash pañanman  
lluquimanpash shitashpa allpa-  
huan quillpachishpantin saquincu-  
na. Na quilla huashaca tuctucuna  
muruhan juntamunmi. Ñami call-  
hana carma pacha chayamun. Tar-  
puccunaca pucushcata japi calla-  
rincuna. Cushi carma pachami, tu-  
cuicunami cushiyancuna.

- Cuitsacunaca huanpracunahuan  
chicchichacunacurcacuna. Yaya ma  
ma shamucpi, paicunaca uellari-  
cricurcacuna. Chaita yaya mama  
ricurashpaca, cuitsacunata pusha  
mushpa shamurcacuna.

- Shuc runa tiyashca nin, paica  
shuc llancac supaita, ishcaipura  
tucushpa llancancapac, mashcash-  
pa puric cashca nin. Chaica mai  
caru sachacunapi, mai caru cucha-  
cunapi, mai manchanayai huaicucu-

- Taquishpa caticrinchic  
ñucanchic mashicunacunahuan  
ñucanchic causaimanta  
ñucanchic llaquimanta  
imatapash nicrinchic

napi, mai shitashca panpacunapi mashcarac cashca nin. Shinapash chaicunapica mana tarimushcachu nin.

Ashtahuancarín shuc mana tiyana hualunpi tiyacta yachai chayashca. Chaica runaca chai hualunpi armarishca nin. Chai supaita cayarashpa, ñucaman shamui, ñucapi quimirin, ñucata llancanapi yana pahuai nishpa. Chai hualunpi armarishca punchaca chishiyashca ña inti huashicucupimi huasiman ticramucushca; huasipica mancata shayachincapac ashalla ninata tullpapi tiyacucta ricurashpaca pucui callaricushpa nin.

Urai cumurirashpa ninataca pucucushca nin. Ashta pucucucupipash nina mana japiricpi, runaca jata ricricushca nin, ña mana ninata japichi tucushpa. Shinapica alli ricucpica chinpapi, tullpa jahuapi shuc supai tiyacushca nin.

Supaica runataca: "Canllatac masheacurcanqui, canllatac muna-curcanqui, ajajai, ajajai" nishca nin. Chashna nicpica, runaca huichai sinca urmashca nin, jaita ricushpa jatarishca nin. Chai ca canchaman caparirashpa callpashca nin.

- 8.- Cai quillcamanta -ra, -cu, -ri, -mu shimi cachiccunata quillcapai.

_____	_____
_____	_____
_____	_____
_____	_____
_____	_____
_____	_____
_____	_____
_____	_____
_____	_____
_____	_____
_____	_____
_____	_____
_____	_____
_____	_____
_____	_____
_____	_____
_____	_____



## 7.- ISHCAINIQUI II YAPARICCUNA

Caipica llucshichic yaparic-  
cunapac mushuc huallpai jamuita ta  
rinchic. Caicunaca shutichinata,  
shutiman cuscata shimi cachic cus-  
catapash huiñachin.

Ishcainiqui II yapariccunaca  
ishcaipimi raquirin: IIN, IIV.

IIN = yapariccunaca shuti  
ticsihuanllami tinquirin.

IIV = yapariccunaca shimi ca  
chic ticsihuanllami tinquirin.

IIN yapariccuna caicunami  
can:

1. -I, -CANA
2. -YUC
3. -MANTA

IIV yapariccuna caicunami  
can:

1. -NA
2. -SHCA
3. -SHPA, -CPI

Shamuc pancapi cai yapariccu  
nata ricucrinchic.



Jamuna: "clasificar"

Quichua taquicunaca chashnami jamurin:

- |             |           |
|-------------|-----------|
| - Jailli    | - Arahui  |
| - Huahuaqui | - Taqui   |
| - Huaiñu    | - Cashhua |
| - Aranhuai  | - Huanca  |

LLUCSHICHIC	{ II {	IIN	1	{ shutimanta shutichinaman (-i, -cana): yurai, jatuncana
2			{ shutichinamanta shuti cuscaman (-yuc): huarmiyuc	
3			{ shuti cuscamanta shimi cachic cus- caman (-manta): allimanta	
YAPARICCUNA		IIV	1	{ shimi cachic ticsimanta shimi ca- chic shutiman (-na): yuyana
2			{ shimi cachicmanta shuti cuscaman (-shca): cashca	
3			{ shimi cachicmanta shimi cachic cus- caman (-shpa, -cpi): shamushpa, shamucpi	

CAI TAPUICUNATA TICRACHIPAI

1.- Ishcainiqui II yapariccunaca,  
imamantatac llucshichic yapa-  
riccunapash can.

---

---

---

---

---

---

---

---

2.- Imatatac cai yapariccunaca shi  
mi shucllacunahuanca ruran.

---

---

---

---

---

---

---

---

3.- Imashinatac cai yapariccunaca  
jamurin, sapihuanlla tinqi-  
rishpaca.

---

---

---

---

---

---

---

---

4.- Mashnapitac mushuc shimi shuc-  
llata huiñachimanta jamurin.

---

---

---

---

---

---

---

---

SHUTICUNAHUANPASH YAPARICCUNAHUANPASH

IIN

Cai catic llucshichic yaparic  
cunaca shutimantami can.

- Puñuimantami huanpraca mana mai  
tutamanta llancai callarirca.

1) -I YAPARIC, shutichinata shuctac  
shuticunamanta (shu-  
ti cusca) huiñachin.

2) -CANA yaparic

jatun + -cana = jatuncana

utca + -i = utcai

jatun = shuti cusca

utca = shuti cusca

-CANA = shutichina rurac huall-  
pai

-I = shutichina rurac yaparic

jatuncana = shutichina

utcai = shutichina

- yurac + -i = yurai

- sinchi + -cana = sinchicana

- casi + -i = casi

- alli + -cana = allicana

- pishi + -i = pishi

- sumac + -cana = sumaccana

- puñu + -i = puñui

- sapalla + -cana = sapallacana

- puca + -i = pucai

- mishqui + -cana = mishquicana

- uchilla + -i = uchillai

- yana + -cana = yanacana

- millai + -cana = millaicana

- Cai carma pachapica tamiaca pi-  
shi can.

- Casimantami cai canchapi causan.

---

Apushcai: "presunción"

- Rumi ñahuica paipac llactata sin chicanahuan mitsarca.

- Sapallacanaca tucui runacunatami llaquichin.

3) -YUC YAPARIC, shuti cuscata shutichinamanta huiñachin.

rumi + -YUC = rumiyuc

rumi = shutichina

-YUC = shuti cusca rurac yaparic

rumiyuc = shuti cusca

- sisa + -yuc = sisayuc

- allpa + -yuc = allpayuc

- tuфу + -yuc = turuyuc

- puyu + -yuc = puyuyuc

- tamia + -yuc = tamiayuc

- Sachayuc canchataicunapi jatun yuracuna huiñan.

- Tutuyuc ñancunapica lluchcarigh-

pa, mana puric tucunchicchu.

4) -MANTA YAPARIC, shimi cachic cuscata shuti cuscamanta huiñachin.

alli + -manta = allimanta

alli = shuti cusca

-MANTA = shimi cachic cusca rurac yaparic

allimanta = shimi cachic cusca

- jaica + -manta = jaicamanta

- pishi + -manta = pishimanta

- utca + -manta = utcamanta

- yanca + -manta = yancamanta

- cashna + -manta = cashnamanta

- Yancamantami purini sumac asuata mashcashpa.

---

Mita: "fase", "período".

Canchantai: "sitio"

- Paicuna shamushpapash utcamanta  
rircallami.

- Jaicamantami huasiman yaicucta  
uyashpaca jatarircani.

-CANA: cai yaparicca shutichinata  
shucta shuticunamanta (shu-

ti cusca) huiñachin. Shina-  
pash -canaca manarac yapa-  
ricchu. Mana sapalla shimi  
shuella shina cai tucunchu.  
-canaca yanapac shimi shuc-  
llami, imashina pacha can,  
imashina sapa can.



TUPAC AMARU II  
JOSÉ CONDORCANQUI

HERÓE DEL  
PUEBLO QUICHUA

Tupac Amarupac sinchicanaca quichua runacunapac ticami cana can.

CAI TAPUICUNATA CUTICHIPAI



1.- Maican yaparictac shutichinata  
shuti cuscamanta huiñachin.  
Shuc shucllacuipi churapai.

---

---

---

---

---

2.- Ima yanapac shimi shucllacuna-  
huantac shutichinata shuti cus-  
camanta huiñachin. Shuc shuc-  
llacuiqui quillcapai.

---

---

---

---

---

3.- Maican yaparichuantac shuti  
cuscata shutichinamanta huiña-  
chin. Shuc shucllacuipi quill-  
capai.

---

---

---

---

---

4.- Maican yaparichuantac shimi ca-  
chic cuscata shuti cuscamanta  
huiñachin. Shuc shucllacuipi  
churapai.

---

---

---

---

---

---

---

5.- Shuti cuscata mashcashpa -i ya  
paricta churashpa shutichina-  
man ticrachipai. Quichuaman ti  
crachipai cai catirac shimi  
shucllacunata.

- valentía \_\_\_\_\_
- bondad \_\_\_\_\_
- belleza \_\_\_\_\_
- soledad \_\_\_\_\_
- dulzura \_\_\_\_\_

- florido \_\_\_\_\_
- polvoriento \_\_\_\_\_
- lodoso \_\_\_\_\_
- nebuloso \_\_\_\_\_
- lluvioso \_\_\_\_\_

7

- -manta yaparicta shuti cusca-  
man yapachishpa shimi cachic  
cuscata rurapai. Quichuaman ti  
crachipai cai catirac shimi  
shucllacunata.

- de pronto \_\_\_\_\_
- escasamente \_\_\_\_\_
- rápidamente \_\_\_\_\_
- vanamente \_\_\_\_\_
- de esta manera \_\_\_\_\_

6.- -yuc yararicta shutichinaman  
yapachishpa shuti cuscata rura  
pai. Quichuaman ticrachipai  
cai catirac shimi shucllacuna-  
ta.



SHIMI CATICPASH SHUTICHIC YAPARICPASH  
II<sup>V</sup>

Cai catic llucshichic yapariccunaca shimi cachicmantami.

1) -NA YAPARIC, shimi cachic tic sihuan tinquirin.

Shimi cachic shutichicta huiñachin.

puclla + -NA = pucllana

puclla- = shimi cachic ticsi  
-NA = shimi cachic shutichic yaparic

pucllana = shimi cachic shuti

- callpa- + na = callpana
- tsalaya- + -na = tsalayana
- chanta- + -na = chantana
- chicacha- + -na = chicachana

- Pushac rimaita tucuchicpi maqui huactana canquichu.
- Huahuamantami huarmicunaca chan-

tanata yachai callarina can.

2) -SHCA YAPARIC, shuti cuscata shimi cachicman ta huiñachin.

huañu- + -SHCA = huañushca

huañu- = shimi cachic ticsi  
-SHCA = shuti cusca rurac yaparic

huañushca = aipuri

- curichi- + -shca = curichishca
- shutu- + -shca = shutushca
- amuya- + -shca = amuyashca
- tucuchi- + -shca = tucuchishca
- tiya- + -shca = tiyashca

---

Shimi cachic shuti: "infinitivo"  
Chantana: "bordar"  
Chicachana: "certificar"  
Aipuri: "participio"

Huasipi tiyashca imacunatapashmi shuhuarca.

- Quinoa chacraca curichishca can.

3) -SHPA YAPARIC, shimi cachic  
cuscata (paltai)

Shimi cachicmanta huiñachin.

shamu- + -SHPA = shamushpa

shamu- = shimi cachic ticsi

-SHPA = shimi cachic cusca ru-  
rac yaparic

shamushpa = paltai

- yarca- + -shpa = yarcashpa

- uju- + -shpa = ujushpa

- napa- + -shpa = napashpa

- jaita- + -shpa = jaitashpa

- quishpichi- + -shpa = quishpi-  
chishpa

- Jarcashpa allcuca piña piña tu-  
cun.

- Tucucuna chaipi cacta napashpa  
varayucca pititaman yaicurca.

- Chai runaca huahuata jaitashpa-  
lla macan.

4) -CPI yaparic

japi- + -CPI = japicpi

japi- = shimi cachic ticsi

-CPI = shimi cachic cusca rurac  
yaparic

japicpi = paltai

Caipica ishcai nucashcami  
ishcai ruraita ruran.

- yarca- + cpi = yarcacpi

- uju- + -cpi = ujucpi

- napa- + -cpi = napacpi

- jaita- + -cpi = jaitacpi

- quishpichi- + -cpi = quishpichic  
pi

---

Pitita: "cuarto"

Napana: "saludar"

Paltai: "gerundio"

- Jarcacpi chircipi chuchicunaca chiu chiu nin.
- Tucuicuna chaipi cacta napacpimi alli cachinca.
- Allcuca cani cushpa jaitacpimi saquirca.

SHIMI CACHIC SHUTICHIC: shimi cachicta shutichic hualpaimi can. Caica ruraita nisha nin. Mana nucashcahuan ashtarinchu.

AIPURI: shimi cachicpac hualpaimi can. Shuti cusca shinami can.

PALTAI: shimi cachicpac hualpaimi can. Shimi cachic cusca shinami can.



CAI TAPUICUNATA CUTICHIPAI

1.- Maican yaparictac shimi cachic  
shutichicta huiñachin. Shuc  
shucllacuipi quillcapai.

---

---

---

---

---

---

---

---

---

---

2.- Maican yaparicta shuti cuscata  
shimi cachicmanta huiñachin.  
Shuc shucllacuipi quillcapai.

---

---

---

---

---

---

---

---

---

---

3.- Maican yaparicta shimi cachic  
cuscata shimi cachicmanta hui-  
ñachin. Shuc shucllacuipi chu-  
rapai.

---

---

---

---

---

---

---

---

---

---

4.- Cai catirac shimi cachic ticsi  
cunapi yapariccunata (-shca,  
-cpi, -na, -shpa) yapachishpa  
shucllacuicunata quillcapai.

-na

cariya- \_\_\_\_\_

---

---

carcu- \_\_\_\_\_

quilluya- \_\_\_\_\_

sihui- \_\_\_\_\_

-shca  
tacsha- \_\_\_\_\_

ticni- \_\_\_\_\_

miclla- \_\_\_\_\_

chacru- \_\_\_\_\_

-shpa  
marca- \_\_\_\_\_

miclla- \_\_\_\_\_

sananpa- \_\_\_\_\_

yacunaya- \_\_\_\_\_

-cpi  
marca- \_\_\_\_\_

sananpa- \_\_\_\_\_

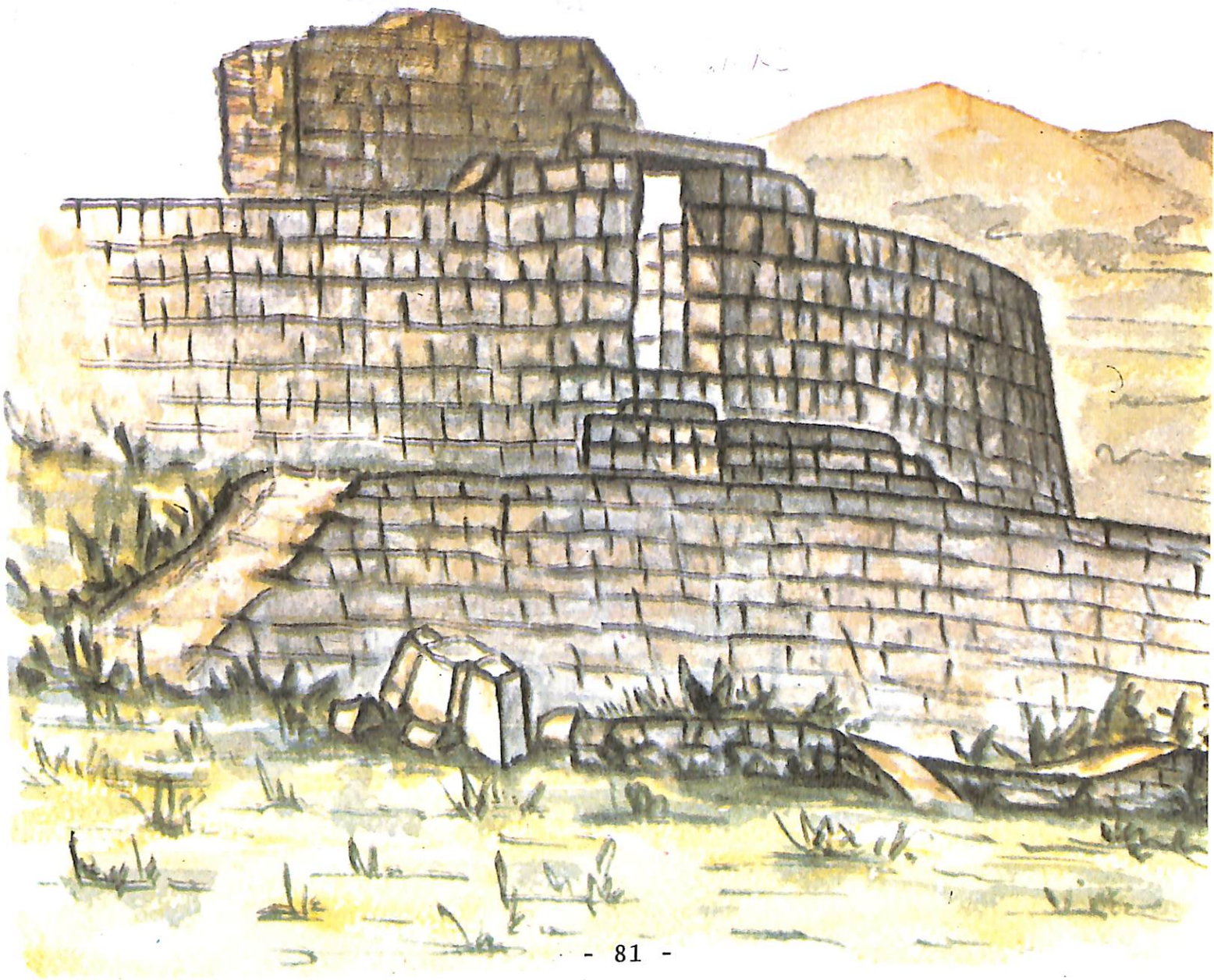
Sihuina: "silbar"  
Ticnina: "latir el pulso"  
Sananpana: "señalar"

LLUCSHICHIC  
YAPARICCUNA

TUCUI CAMUMANTA YAPARICCUNA

I	TICRA CHINA I-1	IN <sub>1</sub>	{ shutimanta shimi cachicman (-ni-, -ya-)
		IV <sub>1</sub>	{ shimi cachicmanta shutiman (-i, -c)
	TUCU- CHINA I-2	IN <sub>2</sub>	{ uchillachic (-cu, -lla) jatunyachic (-sapa, -pacha) yalli cai (-imana) chutai cai (-nic, -ma)
			IV <sub>2</sub>
II	IIN	1	shutimanta shutichinaman (-i, -cana)
		2	shutichinamanta shuti cuscaman (-yuc)
		3	shuti cuscamanta shimi cachic cuscaman (-manta)
	IIIV	1	shimic cachic ticsimanta shimi cachic shutiman (-na)
		2	shimi cachicmanta shuti cuscaman (-shca)
		3	shimi cachicmanta shimi cachic cusca- man (-shpa, -cpi)

INCAPIRCA



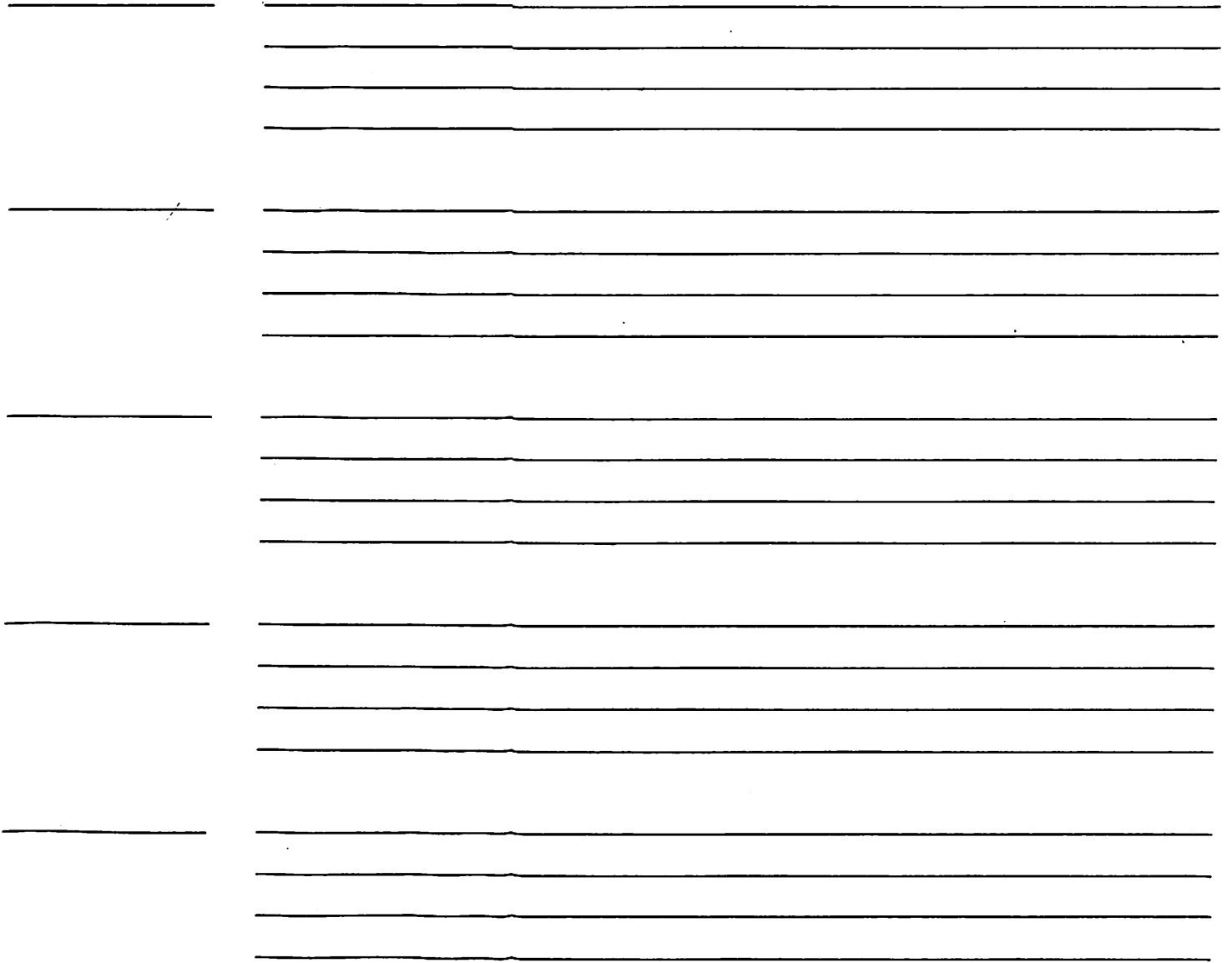
CAI INCAPIRCA SHUYUTA ALLI RICUSHPA  
MUSHUC SHIMI YAPARICCUNAHUAN QUILLCAPAI

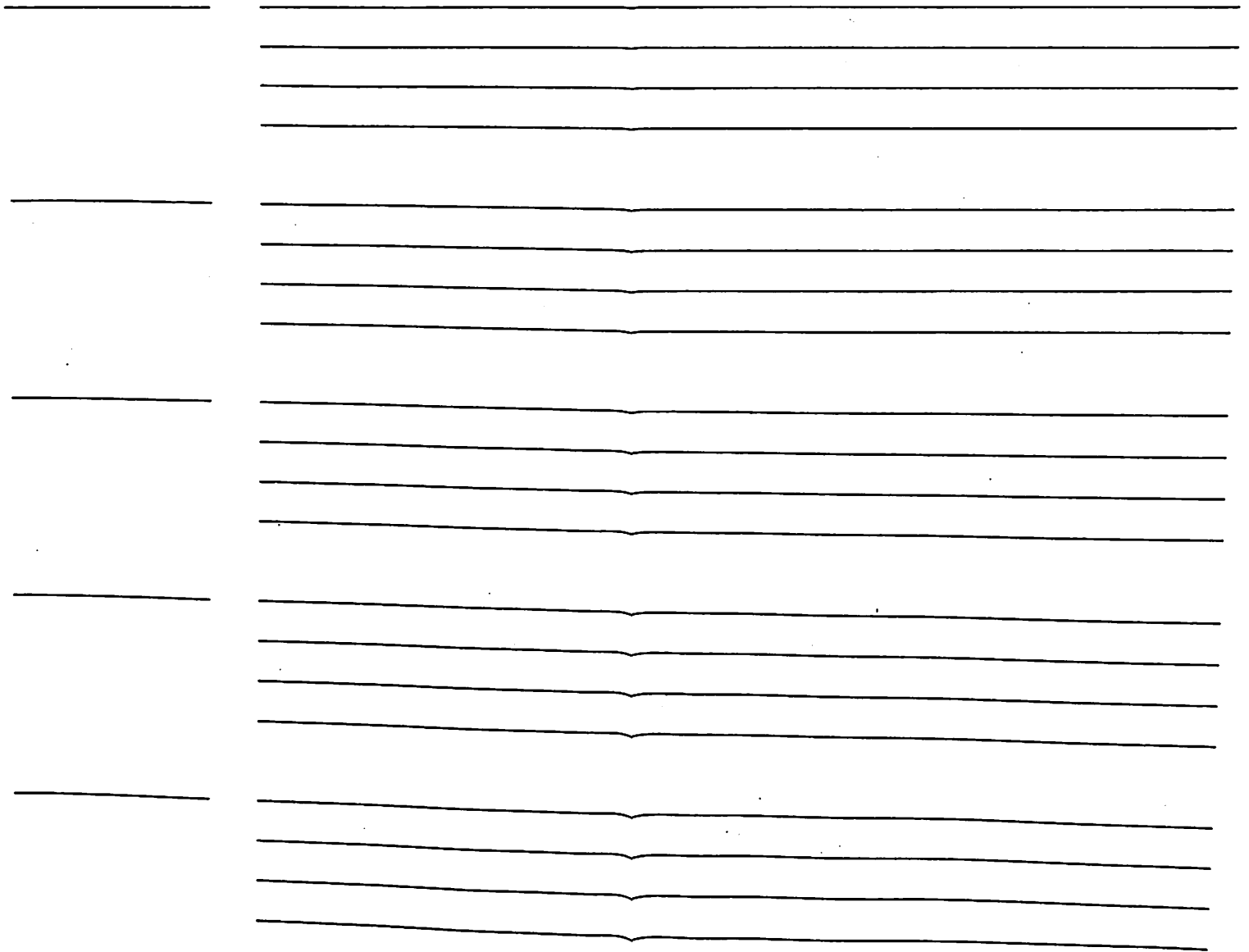
Shucllacuicuna:

PIRCA: pircayana, pircac, pircacu, pircalla, pircasapa, pircashcapacha,  
pircachin, pircanacun, pircashpa, pircacpi, pircamun, pircacun,  
pircaran, pircai, pircayuc, pircana, pircashca, shuccunapash.

CAI QUILLCACUNATA RURANCAPACPASH 80 PANCAPAI ALLI RUCUPAICHIC  
IMA YAPARICCUNALLATAC TIYAN







SHUYUMANTA RICUSHPA MUSHUC SHIMICUNATA  
SAPAN MILCACUNAPI QUILLCAPAI  
Shucllacuicunata ricupai

yuyai (\*)

yuyac

yuyayuc

yuyaimana

yuyaima


(\*) Tucui mashnami YUYAIta charinchic.

yuyacuni

yuyacrinchic

yuyapaichic

yuyamunqui

yuyarupai


## TUCUI CAMUMANTA TAPUICUNA

- 1.- Quichuaca imashina shimitac cashca.
- 2.- Imacuna tantarishpatac ishancata huallpan.
- 3.- Imatac yaparicca can.
- 4.- Imatac quipa yaparicca can.
- 5.- Mashna chican sapicunatac tiyan.
- 6.- Maicancunatac chai sapicunaca can.
- 7.- Imatatac shuti ninchic.
- 8.- Imatatac shutichina ninchic.
- 9.- Imatatac shutiman cusca ninchic.
- 10.- Imatatac yupai ninchic.
- 11.- Imatatac shuti ranti ninchic.
- 12.- Imatatac shimi cachic cusca ninchic.
- 13.- Ima shimi shuellatatac shimi cachic ninchic.
- 14.- Imatac tatica can.
- 15.- Ima shimi shuellacunatac ructu ninchic.
- 16.- Ima shimi shuellatatac ñauchic ninchic.
- 17.- Imatac ticsica can.
- 18.- Imatatac -ni yaparicca ruran.
- 19.- Imatatac -ya yaparicca ruran.
- 20.- Shucman tucuchic yapariccunaca mashnapitac raquirin.
- 21.- -cu yaparicpash -lla yaparicpash imatatac ruran.

- 22.- -sapa yaparicpash -pacha yaparicpash imatatac rurancuna.
- 23.- Carma pacha, llapa pacha: ishcanachu cancuna. Imamantatac.
- 24.- -imana yaparicca imatatac ruran.
- 25.- -nic yaparicpash -ma yaparicpash ima shuti ya pariccunatac cancuna. Imamantatac.
- 26.- Mashnapitac unyachi yapariccunaca raquirin.
- 27.- Maicancunatac unyachi yapariccunaca can.
- 28.- -chi yaparicca ima shutitac can. Imatatac ruran.
- 29.- -nacu yaparicca ima shutitac can. Imatatac ruran.
- 30.- -ri yaparicca ima shutitac can. Imatatac ruran.
- 31.- -hua yaparicca ima shutitac can. Imatatac ruran.
- 32.- -pa yaparicca ima shutitac can. Imatatac ruran.
- 33.- Mashnapitac unai yapariccuna raquirin.
- 34.- Maicancunatac unai yapariccunaca can.
- 35.- -ra yaparicca ima shutitac can. Imatatac ruran.
- 36.- -cu yaparicca ima shutitac can. Imatatac ruran.
- 37.- -cri yaparicca ima shutitac can. Imatatac ru-

- ran.
- 38.- -mu yaparicca ima shutitac can. Imatatac ruran.
- 39.- Ishcainiqui yapariccunaca mashnapitac raquirin. Maicancunatac.
- 40.- -i yaparic, -cana yaparic, caicunaca imatatac rurancuna.
- 41.- -yuc yaparic, caica imatatac ruran.
- 42.- -manta yaparic, caica imatatac ruran.
- 43.- -i, -cana, cai yapariccunaca paipuracunachu cancuna. Imamantatac.
- 44.- -i, -cana, -yuc, -manta, cai yapariccunaca ima mantatac paicunapura cancuna.
- 45.- -na yaparic, caica imatatac ruran.
- 46.- -shca yaparic, caica imatatac ruran.
- 47.- -shpa yaparic, caica imatatac ruran.
- 48.- -cpi yaparic, caica imatatac ruran.
- 49.- -shpa, -cpi, cai yapariccunaca paipuracunachu cancuna. Imamantatac.
- 50.- -na, -shca, -shpa, -cpi, cai yapariccunaca ima mantatac paicunapura cancuna.
- 51.- Shimi cachic shutichic nishpaca, imatatac nisha nin. Maican yaparicta cai shutiyuc can.
- 52.- Aipuri nishpaca, imatatac nisha nin. Maican ya paricta cai shutiyuc can.
- 53.- Paltai nishpaca, imatatac nisha nin. Maican ya

paricta cai shutiyuc can.

54.- Llu<sup>shichic</sup> yapariccunamanta shucniqui yapariccunata paicunapurata tantarichishpa quillcapai.

55.- Llu<sup>shichic</sup> yapariccunamanta ish<sup>cainiqui</sup> yapariccunata paicunapurata tantarichishpa quillcapai.



## SHIMIYUC PANCA

A  
Ahuacana: luchar, guerrear  
Aipuri: participio  
Ancha yupai: muy interesante  
Apucnau: domingo  
Apushcai: presunción  
Arahua: teatro  
Ashtai: relación  
Aullina: funcionar

C  
Callari: introducción  
Callma: rama  
Camu: texto, redacción  
Canchantai: lugar, sitio  
Carma pacha: tiempo  
Catichic: continuativo  
Catina: imitar  
Catinacui: recíproco  
Cusca: junto

CH  
Chantana: bordar  
Chicachana: certificar  
Chicchichana: coquetear  
Chilina: núcleo  
Chilinapac quiquin imapash:  
atributo  
Chutai cachic: enfatizador,  
intensificador  
Chutai cai: intensidad

H  
Huillca: idolo  
I  
Imai cai: cualidad  
Imai maita: dirección  
Imaimana: ser supremo  
Ishcanca: sintagma

J  
Jahuari: cuento, fábula  
Janchacuna: estar con la bo-  
ca abierta  
Jamui: clasificación  
Jamuna: clasificar  
Jamutana: entender  
Juñinacui: conjugación  
Juñu: reunión, conjunto

LL  
Llapa pacha: espacio  
Llucshichic yaparic: afijos  
derivativos

M  
Mita: fase, período

N  
Napana: saludar



Nichishca: predicado  
Nucana: sujetar  
Nucashca: sujeto

Ñ

Nauchi: palabra aguda

P

Paltai: gerundio  
Paña: lado derecho  
Parachai: orden de posición  
Pitita: cuarto

QU

Quipa yaparic: sufijo

R

Raicui: causativo  
Rimai yachai: gramática  
Rimai yachai huallpaicuna:  
formas gramaticales  
Rimai yachai yuyaicuna:  
ideas gramaticales  
Rirpui: reflexivo  
Ructu: palabra grave

S

Samai unyai: sonidos aspirados  
Sananpana:  
Sapi: raiz  
Seque: guión, raya  
Sequena: rayar  
Sihuina: silbar

SH

Shimi amauta: lingüista  
Shimi cachic: verbo  
Shimi cachic shuti: infinitivo  
Shimi llica: sistema de la  
lengua  
Shimi shuclla: palabra  
Shimi shuclla aullichic:  
funcional  
Shimi shuclla aullichic ri-  
mai yachai llucshichic  
yaparic: afijos derivativos  
funcional-grama-  
ticales  
Shimi shucllapac juñu: léxico  
Shimi shucllapac juñu rimai  
yachai llucshichic ya-  
paric: afijos derivativos  
léxico-gramatica-  
les  
Shina cai: modalidad  
Shucllacui: oración  
Shucman ticrachina: convertir  
Shucniqui ishcaniqui rir-  
pui: reflexivo de primera  
y segunda persona  
Shuti: nombre

T

Tati: sílaba  
Ticsi: base, fundamento  
Ticnina: latir el pulso  
Tiscuna: declinar  
Tucuna: modificar

## Y

Umiña: piedra preciosa  
Unai: aspecto  
Unancha: signo  
Unancha llica: sistema de  
    signos  
Unanchai: significado  
Unyachi: voz (en gramática)  
Unyachi sinchiyachina: elevar  
    la voz  
Unyachi tancai: golpe de voz  
Unyai: voz

Yalli cai: superlativo  
Yaparc: afijo  
Yaparc shimi: lengua agluti  
    nante  
Yupaichai: respeto, aprecio,  
    cortesía  
Yupaichana: respetar, apre-  
    ciar, agradecer  
Yupai: número  
Yupana: numerar

-----

## TARIPASHCA PANCACUNA

- Aguilar, R. Gramática Quechua y Vocabularios. Universidad Nacional Mayor de San Marcos, Lima, 1970
- Ajmanova, O. O. Diccionario de Términos Lingüísticos. Enciclopedia Soviética, Moscú, 1966
- Almeida, Ileana. "Algunos Aspectos de la Aglutinación en Lengua Quichua". La Cultura Andina en el Ecuador, Vol. VII, No. 21b, Cultura, Banco Central del Ecuador, Quito, 1985
- Bascacov, N. A. "Orden y Jerarquía de los Afijos en la Base de las Palabras de las Lenguas Turcas", Tipología Morfológica y el Problema de la Clasificación de las Lenguas. Academia de las Ciencias de la URSS, Moscú, 1965 (en ruso)
- Bazin, L. "Le Turc", Le Langage, Vol. XXV, 929-949, Enciclopedia de la Pléiade, Edition Gallimard, Bélgica, 1968
- Borobkov, A. K. "Aglutinación en las Lenguas Turcas", Tipología Morfológica y el Problema de la Clasificación de las Lenguas. Academia de Ciencias de la URSS, Moscú, 1965
- Cerrón Palomino, Rodolfo. El Quechua: una Mirada de Conjunto. Centro de Investigación de Lingüística Aplicada, Universidad Mayor de San Marcos, Lima, 1980
- Cerrón Palomino, T. Gramática Quechua: Junín-Huanca. Ministerio de Educación, Lima, 1976
- Cooms, D; Cooms, H; Weber, R. Gramática Quechua: San Martín. Ministerio de Educación, Lima, 1976
- Cordero, Luis. Diccionario Quichua-Español, Español-Quichua. Universidad de Cuenca, Cuenca, 1976
- Cusihuamán, A. Gramática Quechua: Cuzco-Callao. Ministerio de Educación, Lima, 1976
- Escobar, G. Vocabulario y Praxis de la Lengua General de los Indios del Perú Llamada Quichua. Quinta edición, Instituto de Historia, Lima, 1951

- Guardia, C. Gramática Kechwa. Ediciones Los Andes, Lima, 1973
- Muysken, P. Syntactic Development in the Verb Phrase of Ecuatorian Quichua. The Peter Ridder Press, Lissc, 1977
- Naula, J.: Burns, D. Un Estudio de Fonología, Morfología y Sintaxis del Quichua de la Provincia del Chimborazo. Quito, 1972
- Parker, G. Gramática Quechua: Ancas-Huailas. Ministerio de Educación, Lima, 1976
- Quesada, F. Gramática Quechua: Cajamarca-Cañaris. Ministerio de Educación, Lima, 1976
- Serebrenikov, B. A. "Causas de la estabilidad del sistema aglutinativo", Tipología Morfológica y el Problema de Clasificación de las Lenguas. Academia de Ciencias de la URSS, Moscú, 1965 (en ruso)
- Storik, P. Ya. "Sobre la Relación de la Aglutinación y la Incorporación", Tipología Morfológica y el Problema de Clasificación de las Lenguas. Academia de Ciencias de la URSS, Moscú, 1965 (en ruso)
- Soto, C. Gramática Quechua: Ayacucho-Chanca. Ministerio de Educación, Lima, 1965
- Spirkin, A. El Origen de la Conciencia Humana. Editoriales Platina Stilcograf, Buenos Aires, 1965
- Sunik, O. P. "Cuestiones sobre la Tipología de las Lenguas Aglutinantes", Tipología Morfológica y el problema de la clasificación de las Lenguas. Academia de Ciencias de la URSS, Moscú, 1965 (en ruso)

## QUICHUA SHIMIYUC PANCACUNA

- Aquilar Páez, Rafael. Gramática Quechua y Vocabularios. Universidad Nacional de San Marcos, Lima, 1970
- Ajmanova, O. S. Diccionario de Términos Lingüísticos. Enciclopedia Soviética, Moscú, 1966
- CIEI-PUCE. Caimi Ñucanchic Shimiyuc-Panca. Quito, 1982
- Cordero, Luis. Diccionario Quichua-Español, Español-Quichua. Universidad de Cuenca, Cuenca, 1955
- Guardia Mayorga, César. Runasimi Allin Rimay Yachay. Ediciones Los Andes, Lima, 1973
- Lira, Jorge. Diccionario Kkechuwa-Español. Librería León, Cusco.
- Ministerio de Cultura. Diccionario Filosófico. Moscú, 1954
- Ricardo, Antonio. Vocabulario y Phrasis en la Lengua General de los Indios del Perú, Llamada Quichua. Edición de Guillermo Escobar, Instituto de Historia de la Facultad de Letras, Lima, 1951
- Salvat Editores. Enciclopedia Salvat. Barcelona, 1973
- Shanski, N. M.; Ivanov V. V. Diccionario Etimológico de Lenguas Eslavas e Indoeuropeas. Ministerio de Educación, Moscú, 1961
- Torres Fernández de Córdoba, G. Diccionario Runashimi-Yurakshimi. Casa de la Cultura Ecuatoriana, Núcleo del Azuay, Cuenca, 1982

# TIYASHCACUNATA RICSICHIC PANCA

	Panca
Callari .....	I
1.- Quichua yaparic shimi .....	1
2.- Shimi shuc <u>lla</u> parachai camachishca manta chilinapac quiquin imapash + chilina .....	4
3.- Imashina quichua shimipi shimi shuc <u>lla</u> tucucmanta .....	11
4.- Unanchai pitishca sapi .....	15
- Shuti unanchai pitishca sapi (N)	15
5.- Llu <u>shichic</u> yapariccuna .....	28
6.- Shuc <u>niqui</u> I yapariccuna .....	32
- Shutita shimi cachic ticsiman ti- crachin IV1 .....	36
- Shucman tucuchic yapariccuna I-2	37
- Uchillayachic IN2 .....	37
- Uchillayachicpash jatunyachicpash yapariccuna IN2 .....	39
- Yalli caipash chutai caipash yapa- riccuna IN2 .....	45
- Unyachipash unaipash yapariccuna IV2 .....	51
- Unai yapariccuna IV2 .....	58

7.- Ishcainiqui II yapariccuna .....	67
- Shuticunahuanpash yapariccuna-	
huanpash IIN .....	70
- Shimi caticpash shutichic yaparic	
pash IIV .....	75
Tucui camumanta yapariccuna .....	80
Tucui camumanta tapucuna .....	86
Taripashca pancacuna .....	92
Quichua shimiyuc pancacuna .....	95

-----

Primera edición  
financiada por Swissaid  
Tiraje 1.500 ejemplares  
Quito, julio de 1987.