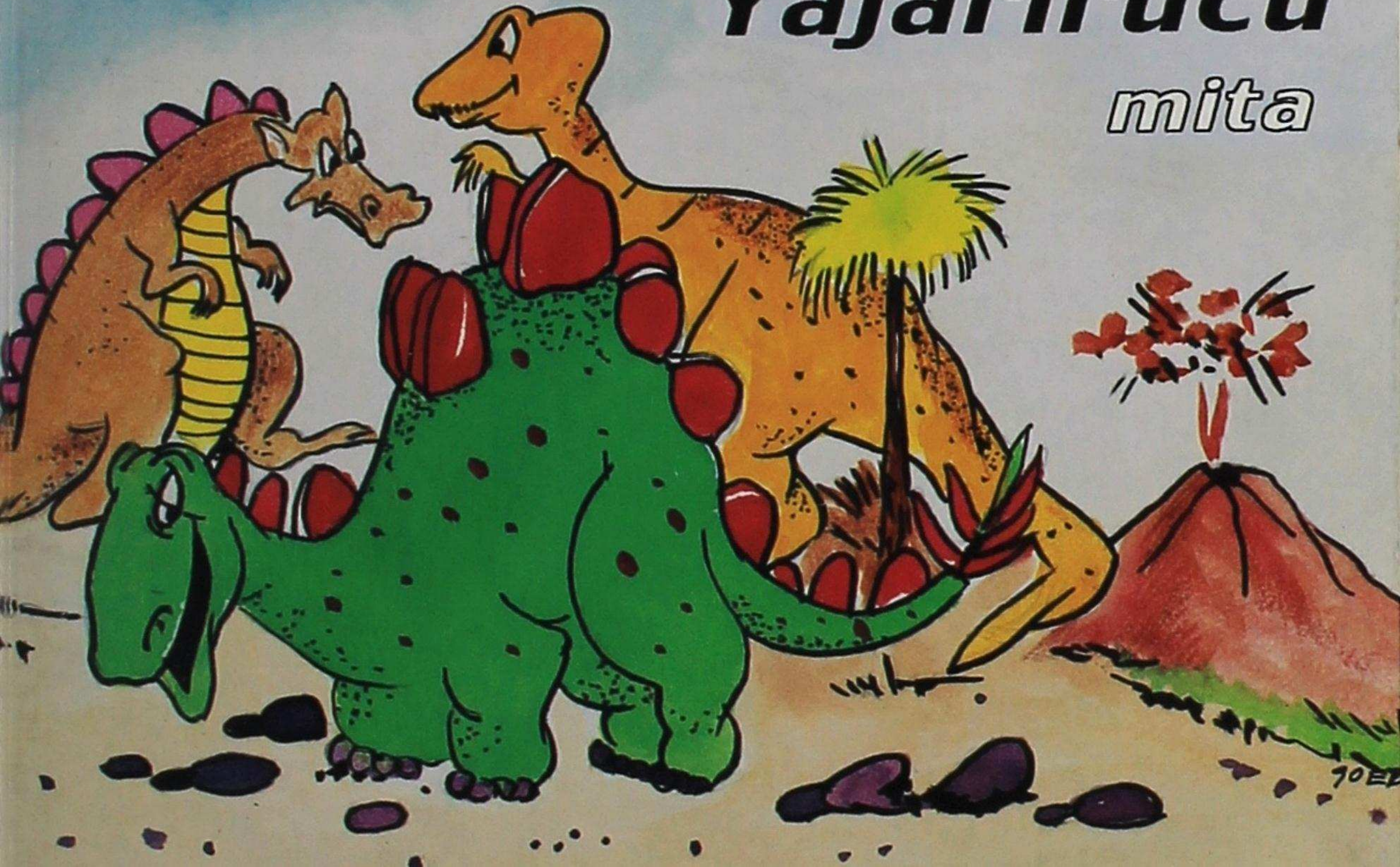


# ***Yajarirucu***

*mita*



# Yajarirucu mita

**Dirección Nacional de Educación Intercultural Bilingüe**

Quito - 2001

**Publicación financiada por el convenio  
Ministerio de Educación y Cultura-Fondo de Solidaridad.**

© DINEIB

© Consuelo Yáñez Cossío, Macac

*Interpretación al quichua: Juan Cuji*

*1ra. edición*

*Dibujos: Goering Cabezas*

*Diseño y diagramación: "Macac"*

*Impresión: Imprenta Mariscal*

*Tiraje: 5.000 ejemplares*

ISBN-

No. de registro de derechos de autor:

Quito, 2001

# **YAJARIRUCU MITA**

**Consuelo Yáñez Cossío**

**Quito - 2001**

## C a l l a r i

Ñaupá pacha causaita ricsishpami pachamamapi cashca yu  
yaiman chayachin.

Tucui allpa pachapi imalla tiyashcatami yachashun. Runa-  
cuna ricuri pacha imashina cashcatami ricshishun. Runacuna  
shuctac tiyashcacunahuan imashina **quimirishcatami** yacha-  
shun.

Causai pacha imashina cururayashcata, imashina chican-  
yashpa catishcatami yachai ushashun. Chai yachaicunahuanmi  
pachamamta alli pushac tucushun. Mana huaclichishpa runa-  
cunata yanapachunmi camana.

Pacha mamapac huiñai causaimi can. Chai huillaimi runacunapac causaita allichincapac yanapanca. Allpapica ima ruranata, ima pucuchinatami yuyana. Ima huihuacunata mirachinata, ima tiyashcacunatami alli apana.

Yajarirucu yachaica, pachamama huiñai causaipac shuc sami huillaillami can. Caica pachamamata yachacuna munaitami churaipac can. Huiñai causai yachai munaitapashmi churan.

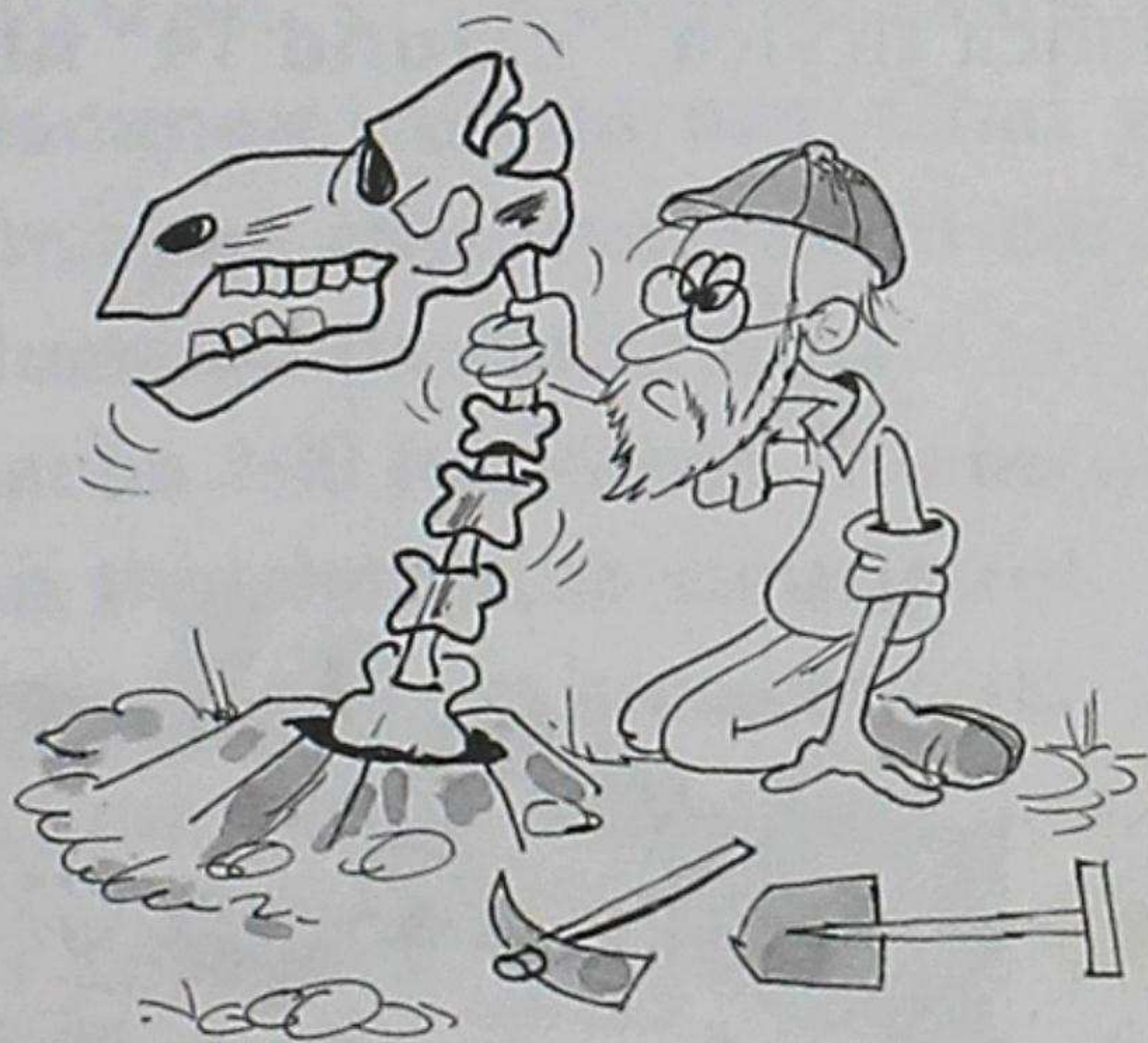
Runacunaca llactacunapac huiñai causaitami ruranchic. Pacha mamapac huiñai causaitapashmi quillcashpa yanapanchic. Chaimi yachai huallpai saquirin.

Pacha mamaca runacuna shinami huiñai causaiyuc can.

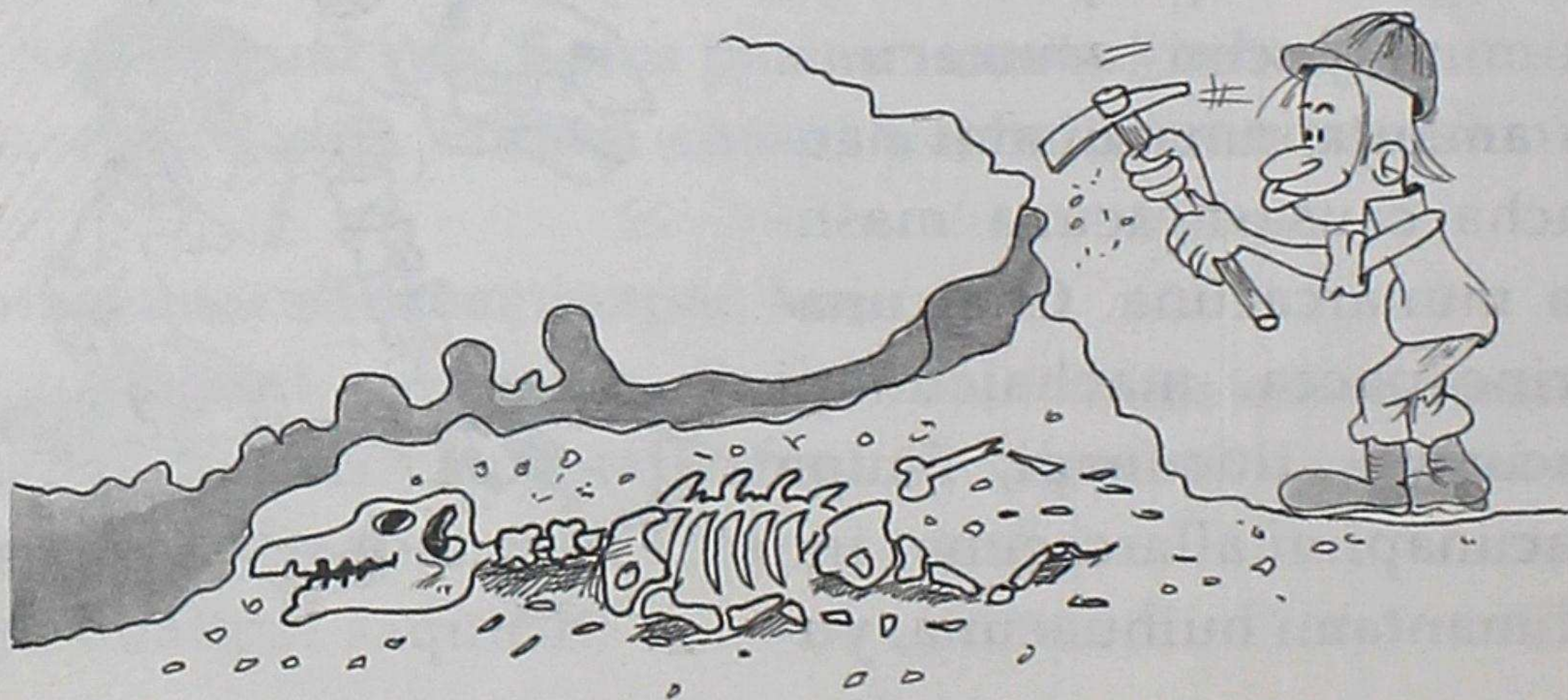
# T a r i p a i c u n a

Runacunaca paicunapac, pachamamapac ñaupa pachata ya chana munaiyucmi tucurcacuna. Tauca **amauta** runacunami ñaupapacha causashcacuna mashcanata munarcacuna. Chaicunata tarincapacca, machaicunapi panpacunapi, tiucunapi, ñaupacu-chacunapimi allarcacuna.

Allimantami huihuacuna, yu-



racuna, runacunapac puchucunata tarircacuna. Chaicunataca mashna huatayuc cashcatami yachancapac chayarcacuna. Chai-pacca sinchiyaita shitac ruraitami mutsuncuna. Cai tupuipi mut sushca ticsica, "carunu 14" nishca shutimi can.





## Callari causaccuna

Allpapi callari causaica "quimicu yacu" shutipimi cashcata iñincuna. Chaica 3.500 junu huatacunami tucun nin. Chai yacuca callari causaccunaman carancapac sinchiyaiyucmi carca. Chashnami allimanta allpaman llucshishpa catircauna.

Chai pachamanta ñucanchic pacha 100 huaranca huatacuna ñaupallamantami tucui ima cunan tiyashcacuna ricurimun.

Cai shuyucunapimi allpamamapi callari causaccunata ni-quishpa ricuchi ushanchic. Runacuna, tulluyuc huihuacuna, aichahuacuna, chuchuccuna, pishcucuna, yuracunami can. Chai cunaca chican **samicunami** ricurin.

## Mashna huatayuc



runa cac: 100.000



jatun cushillu: 26'000.000



cunan pacha huihuacuna:  
53'000.000



pishcucuna: 136'000.000



yajarirucu: 195'000.000



ñaupa pacha huihuacuna:  
225'000.000



cunan pacha yuracuna:  
345'000.000



ñaupa aichahuacuna:  
395'000.000



ñaupa yuracuna:  
440'000.000



mana tulluyuc caccuna:  
600'000.000



mana tulluyuc caccuna:  
1.000'000.000



ñaupa callanpacuna:  
3.000'000.000

Cai cac-  
cunaca  
paicu-  
napura  
quimiri  
shcacu-  
nami  
can.  
Tucui-  
mi  
pacha  
mama-  
huan  
cancu-  
na.

Callari yuracunaca 440 junu huatacuna ñaupamanmi macucha ucupi ricurirca nin. Chaica puchucuna tarishcapimi yacharin. Chai yuracunami huairamanta **osijinu** aisac tucurca. Ñaupamanca yacumanta oxígenota aisaccunami carca.

Yacu ucupi causac yuracuna, huihuacunami tiyan. Chaicunaca tauca uchilla causaccunata, yacupi tiyaccunatami micuncuna.

Allpapi causac callari huihuacunaca 225 junu huatacuna ñaupallami ricurca. Huaquinca panpapi puriccunami can. Huaquinca huairatami ancancuna. Cutin huaquinca yacuyuc allpapi llucancuna.

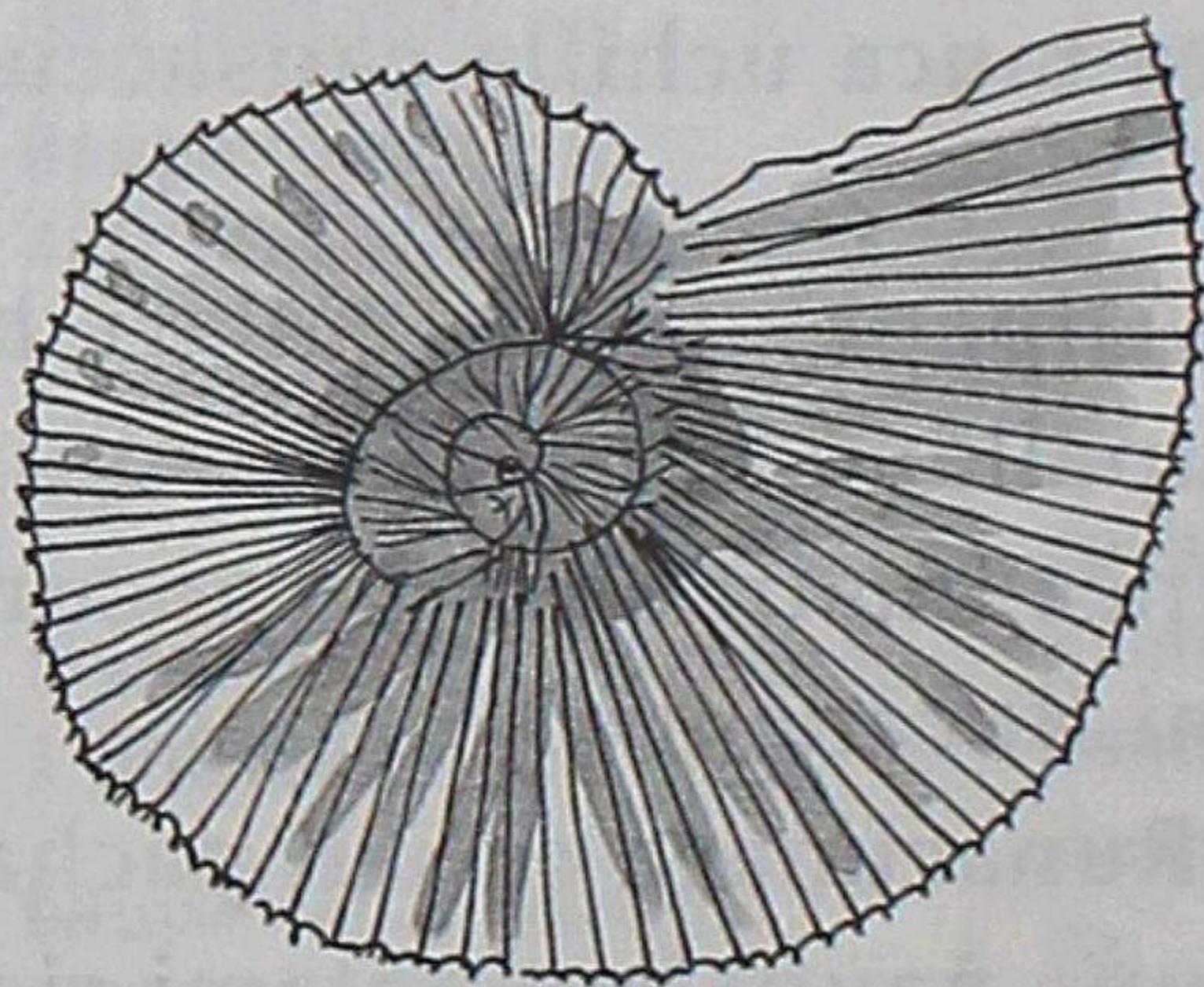
Runacunaca cunan pacha causacun shina 100 huaranca huatacuna ñaupallamantami ricurircacuna.

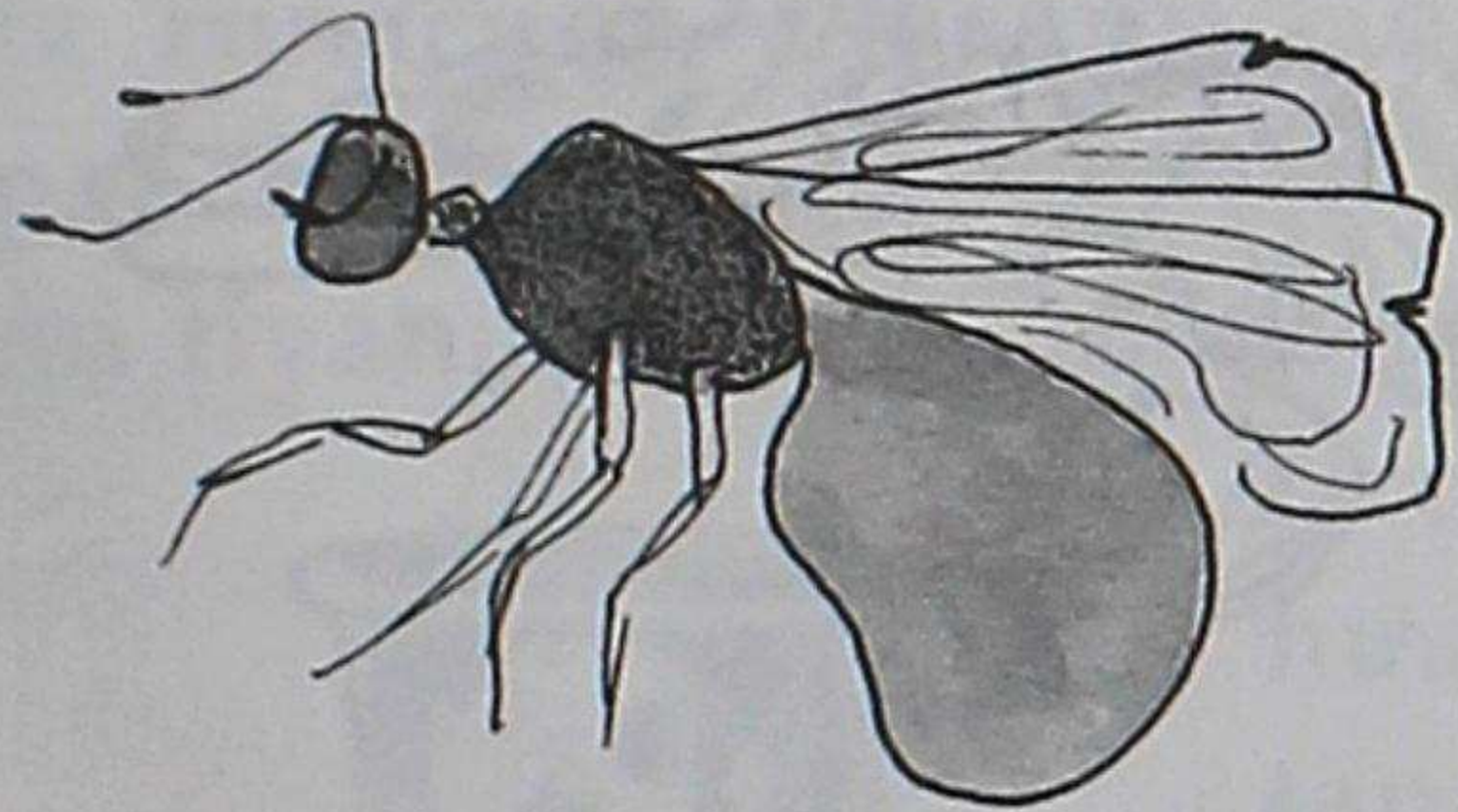
## Puchu huallpacuna

Causaccuna huañushpaca ismun, mana cashpaca huihuacunami micun. Shuctaccunaca allpapi panparishpami huacai-chirincuna.

Jahualla cuscacunaca ismun. Cutin sinchi **cuscacunaca** shuc taccunahuan yanaparishpami sinchiyashpa causancuna.

Chai puchucunami rumicunapi llutarishca tiyan. Quiquin huallpami saquirin.



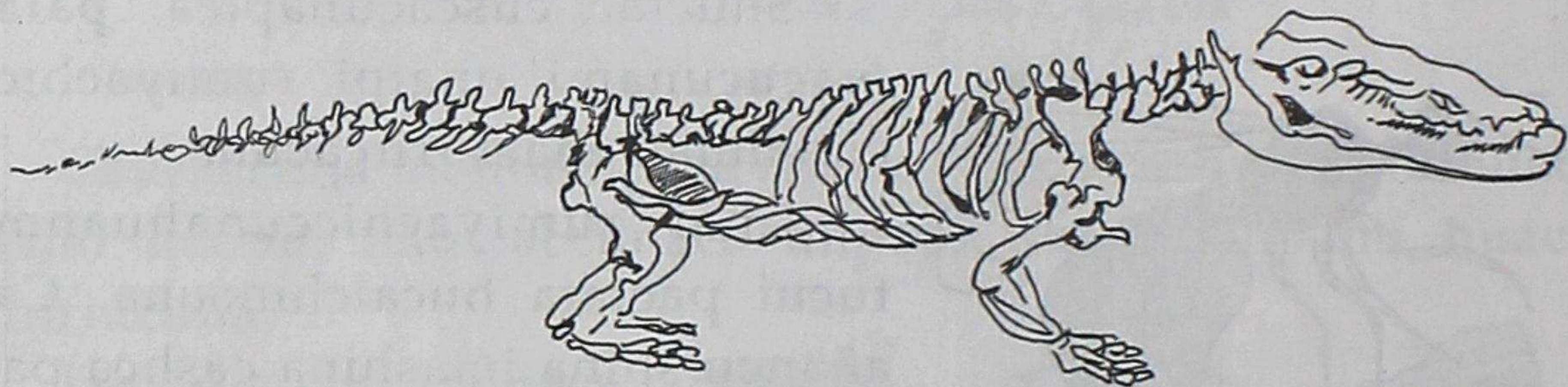


Shuctac cuscacunapica, **palamacucunami** unaipi rumiyachic-cunahuan chacrurircacuna.

Chai rumiyachiccunahuanmi tucui pactata hucaichincuna. Cai añancu shina imashina cashca paçtami panparishca tiyancuna.

Cai palamacuca 40 junu huata-cuna ñaupamanmi **yura huiqui** yacupi panparishpa rumiyarca nincunami. Chaitami **puchumi** nincuna.

Allashpaca tullucunatami tarircacuna. Runacunapac, jatun huihuacunapacmi carca. Chai puchumicunaca yapa chaquishca, rasu cuscacunapi panparishpami causancuna.



Cai huihua puchucunataca Alemania llactapi allashpami tarircacuna. Chai huihuacunaca, mayucunapi, cuchacunapimi causarcacuna. Shuctac huihuacunata, quihuacunatami micuccuna carca.

Amauta runacuna cai tulluta allichinaca mana jahuallachu carca. Sapan tullucunata tantachishpami huihua huallpata rurarcacuna.

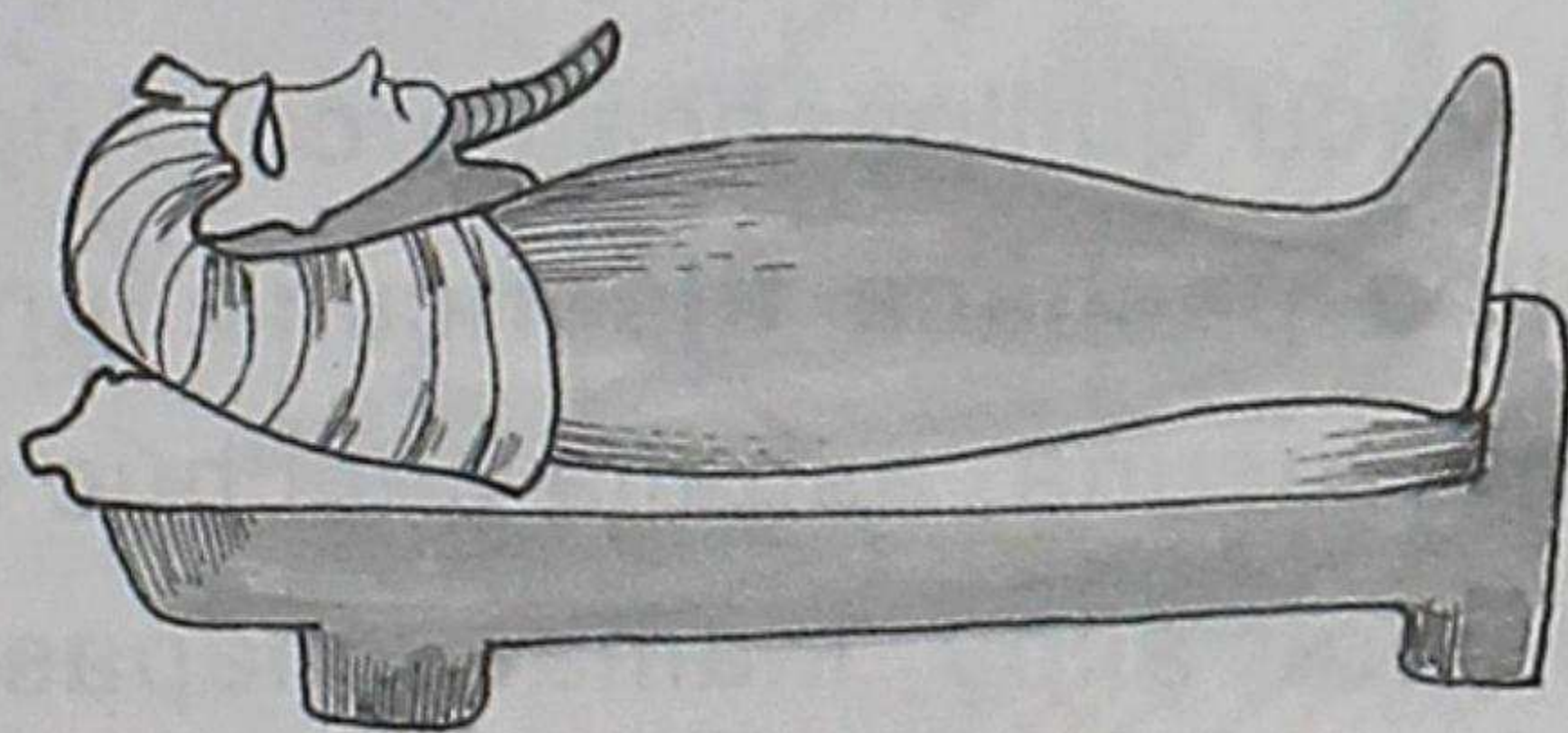
Huaquin tullucunaca mana tarirircachu. Illac tullucunataca paicunami imahuan rurashpa pactachircacuna.

Tullucunaca tauca illacmi taririncuna. Pactachincapacca amauta runacunami huallpashpa rurancuna. Chashnami tucui pactachinaman chayancuna.

Chai cuscacunapimi ñaupa pacha llaqta runacuna causarcacuna. Runacunapac, huihuacunapac achca puchucunamim tiyan. Chaicunatami **tiupi**, allpapi, rasupi panpashcata tarircacuna.

Chaquiri, rasumi sumacta huacaichincuna.

Sapan causai munaicunahuan panpashca runacunapac tullucunata pashmi tarircacuna.



## YAJARIRUCUCUNA

195 huatacuna ñaupaman allpapica, jatun huihuarucucunami causarcacuna. Chai pachaca rupacmi carca. Urcucunapi rasupash mana tiyarcachu.

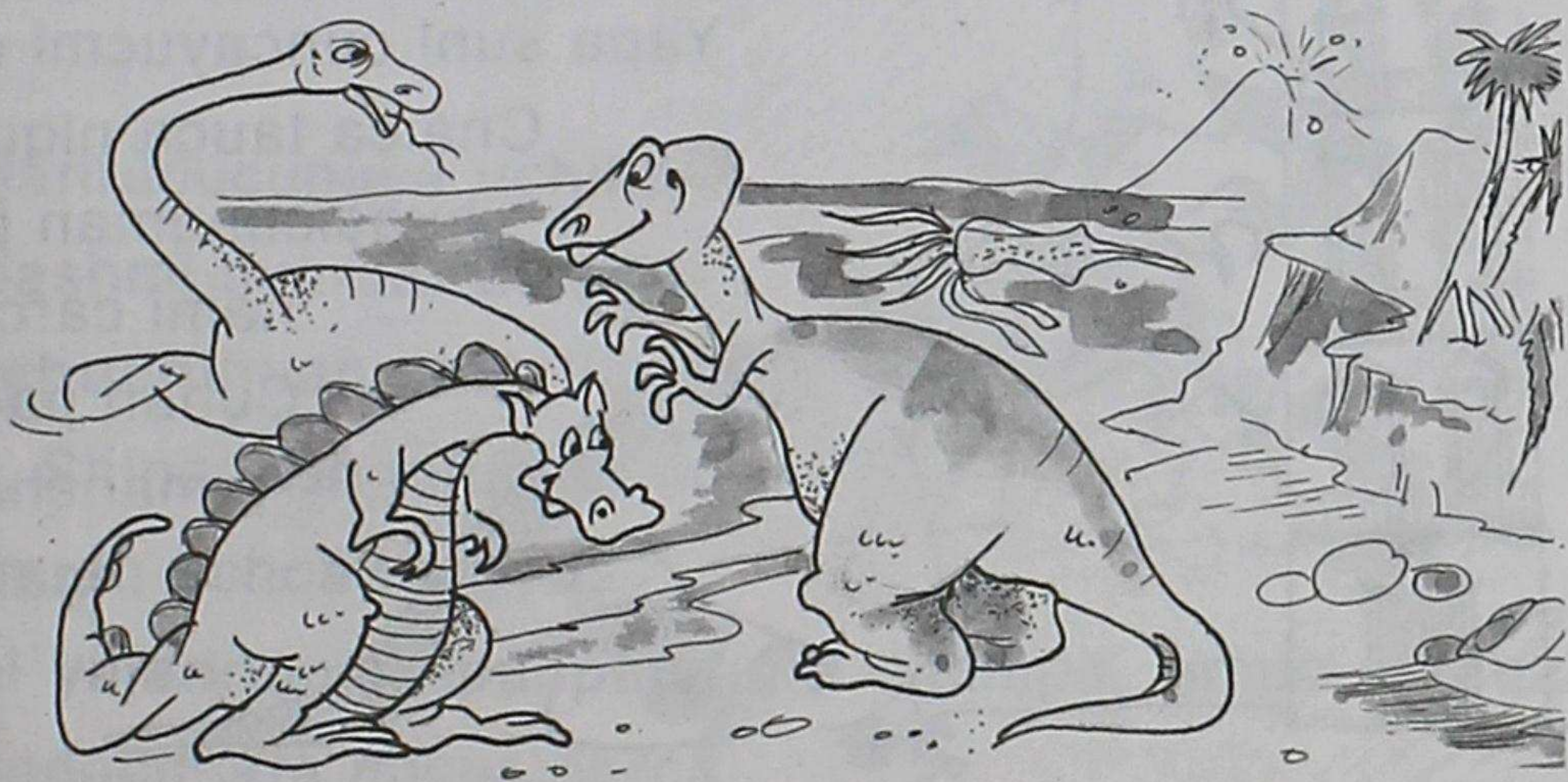
Mama cuchapash mana ucuchu carca. Pachamamapi achcami yacu quillpashca carca. Alpaca jucumi carca.

Allpa pachaca **tijsancuna** juntashcami carca. Tauca sami palamacucuna, ashalla chuchuc uchilla huihuacunami tiyarca.

Huaira, allpa, mamacuchapash jatunrucu llucaccuna jatun,



uchilla, huihuacuna camashcami carca. Chaicunaca yajariru-  
cu shutimi carca. Allpa pachaca paicunapacmi carca.



Allpa pachapica braquiosaurio shuti huihuami yapa jatun  
causarca. Chupa ñaupimanta sinca ñaupi-  
camanca30 tatquimi tupuric carica.

Yapa suni cuncayucmi carica.

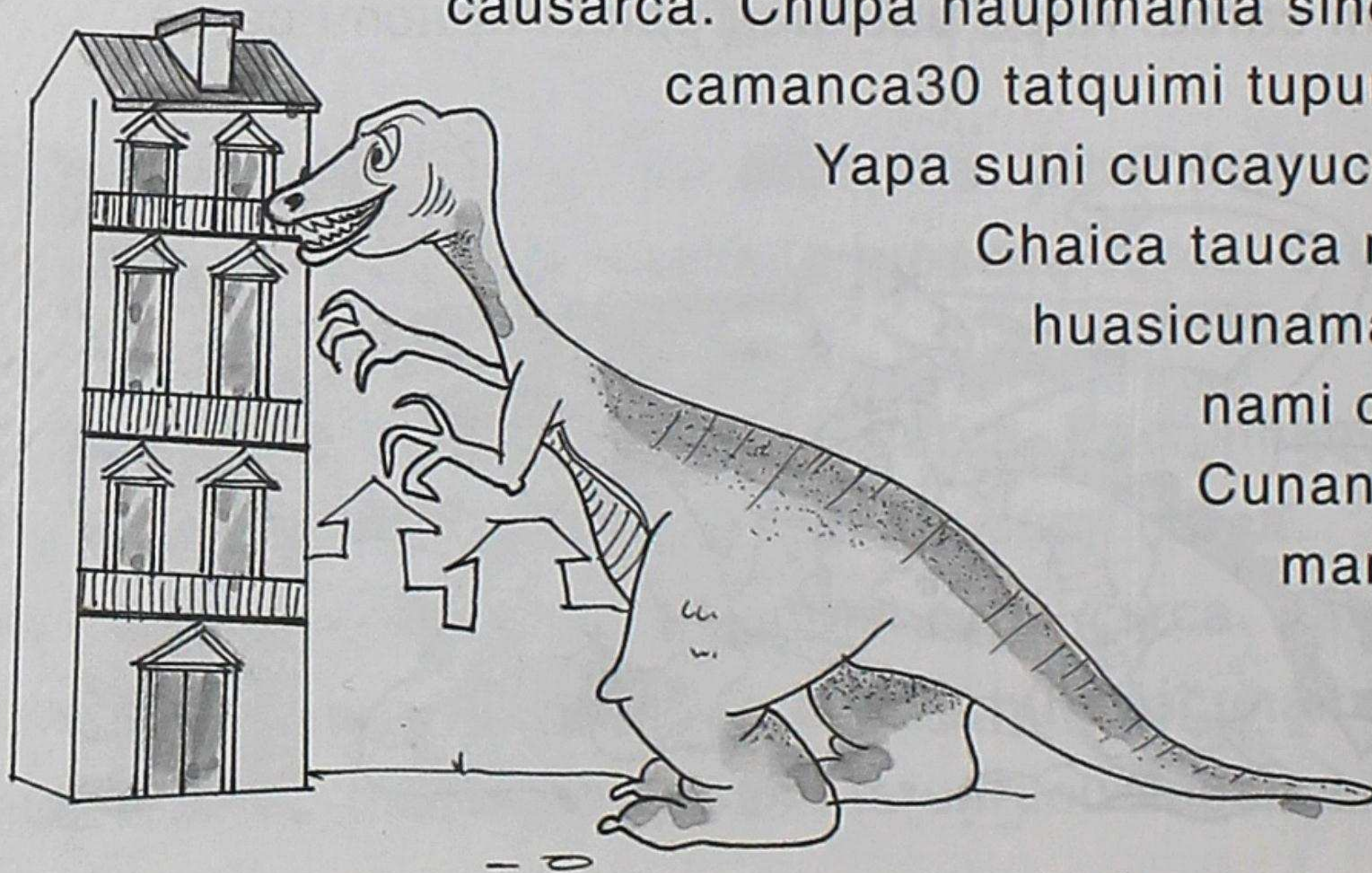
Chaica tauca niqui acsi  
huasicunaman pacta-

nami carica nin.

Cunan pachaca

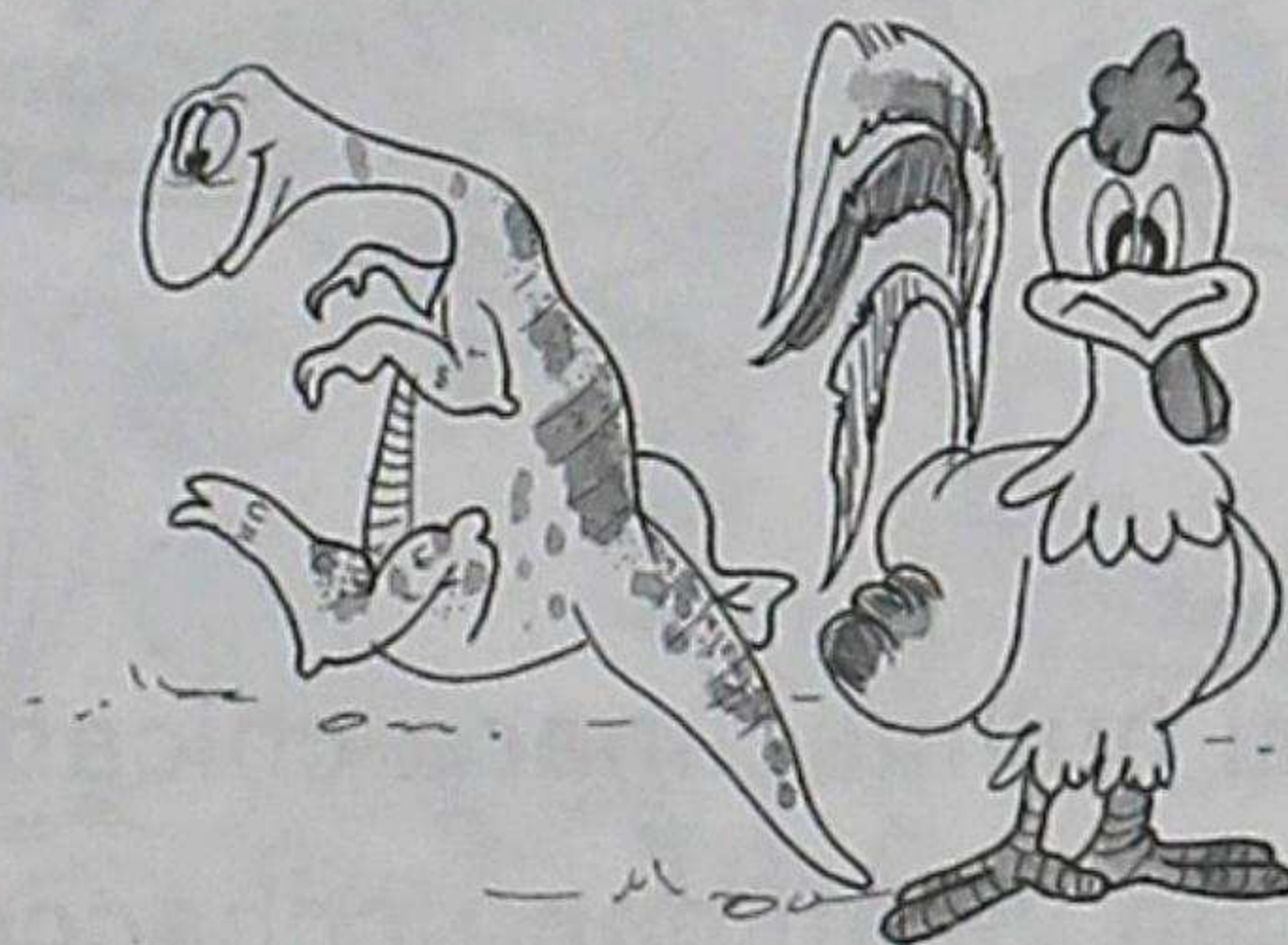
manchanami

canman.

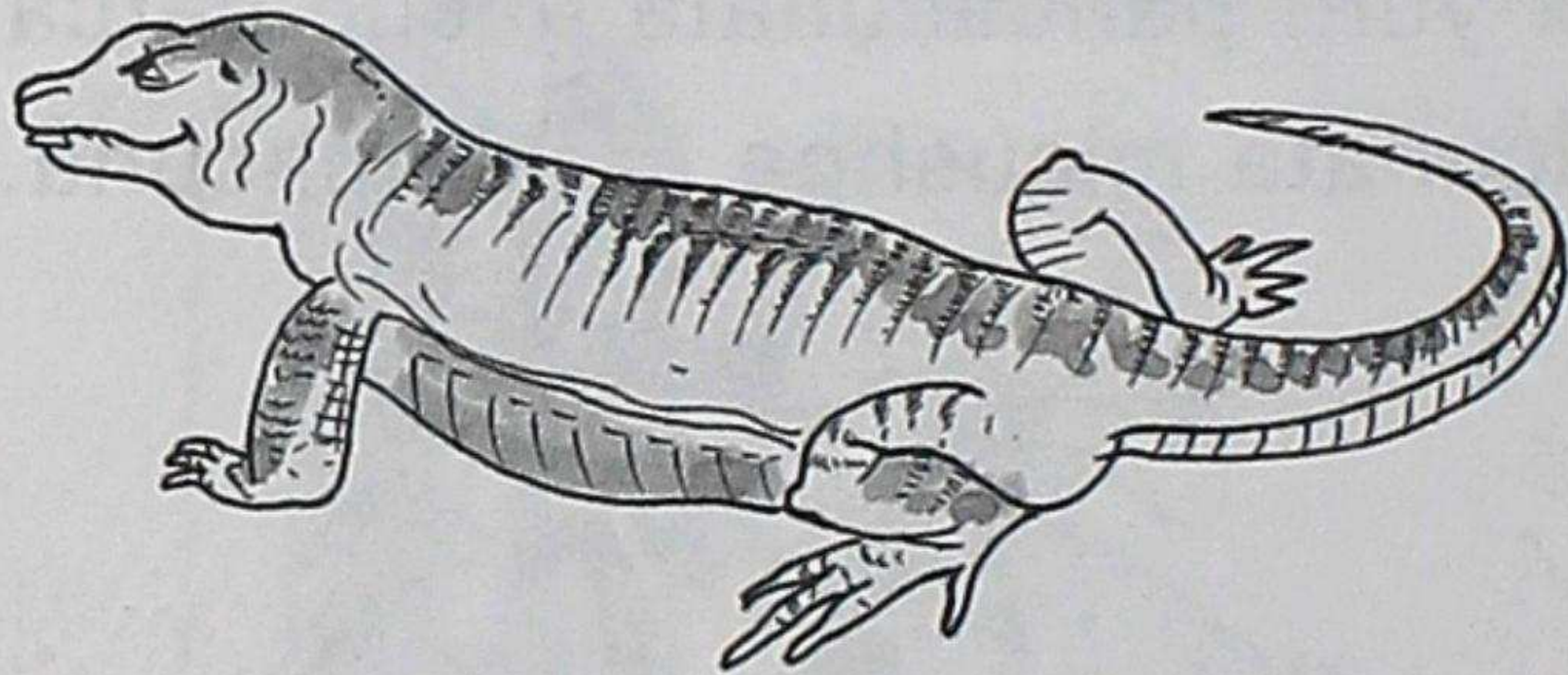


Chai huihuarucuca yura pancacunatami micuc carca. Yapa suni cuncayuc cashpami acsi yura pancacunata micuc carca. Chashnami tucui sami pancacunata micushpa causarcacuna.

Yajarirucucunaca uchillacunapashmi tiyarca. Chaicunaca **chuchihuan** pactallami carca. Shinapash jatuncunami ashtahuan achca tiyarca.



Cai yajarirucuca panpamanta pitishpa, amuc quihuacunata, panpacunata micuc carca.



Uchilla chaquiyuc panpapi  
llucac yajariru-  
cucunapashmi  
tiyarca. Chaicunaca  
yacu cuchucunapimi  
causarcacuna.

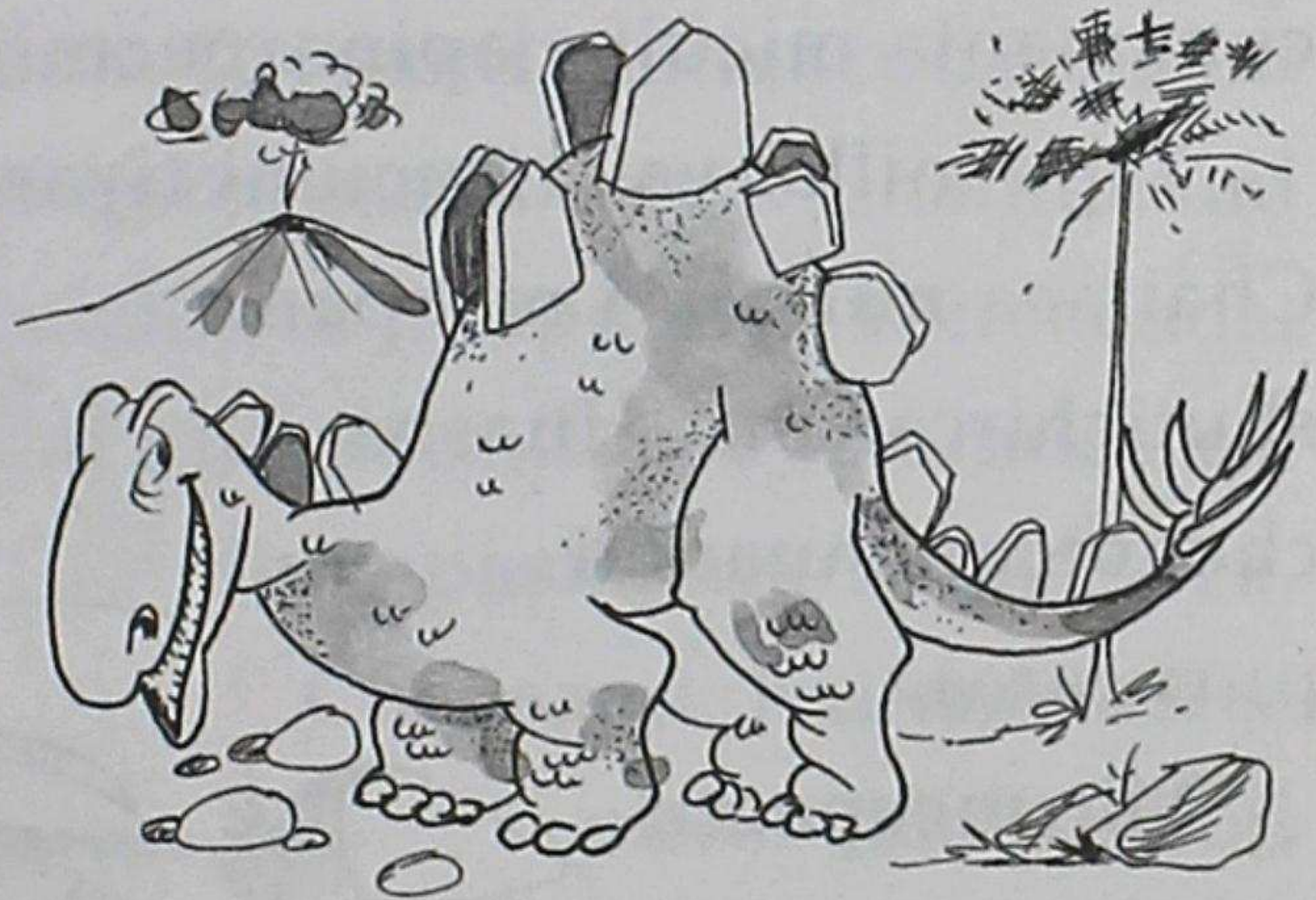
Chai huihuacunaca chican samicunami carca. Cunan pacha  
causacun yajariman ricchaccunami carca.

Piñacunami carca. Pishcucunapac luluncunata, shuctac u-  
chilla huihuacunata japishpami micushpa causarcacuna.

Pacta chaquicunayuc  
yajarirucunapashmi tiyar-  
ca. Chaicunaca **aunchi-**  
yuc carica.

Chai huihuaca sinchi,  
piñami carica. Huashapi  
**sucamayucmi** carica.

Chupa cachucunahuan-  
mi shuctac huihuacuna-  
manta mitsarircacuna. Ya-  
cu cuchu cuscacunapimi  
causarcacuna.



Huaquin yajarirucunaca suni chaqui, suni cuncacunami  
catiyarca. Chaicunaca yapa jatun, suni yura-  
cunamanta micuita japincapacmi yanaparca.

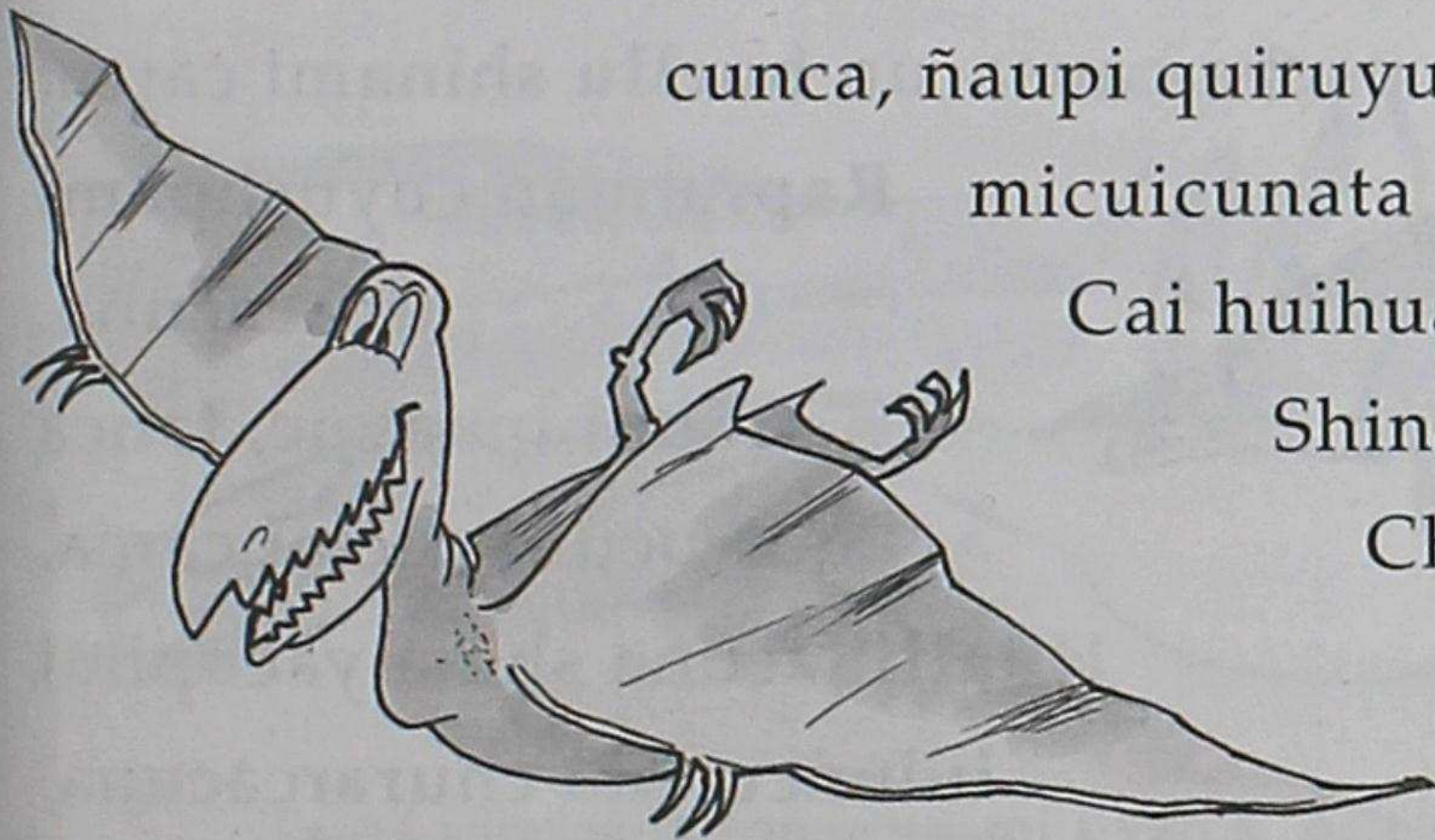
Yapa millai yajarirucumi tiyarcas.

Chaitaca **millajari** nishpami  
shutichircacuna. Huasha  
chaquicunahuanmi  
puri carca.

Micuncapacca  
sillucunahuanmi  
japiccuna carca.

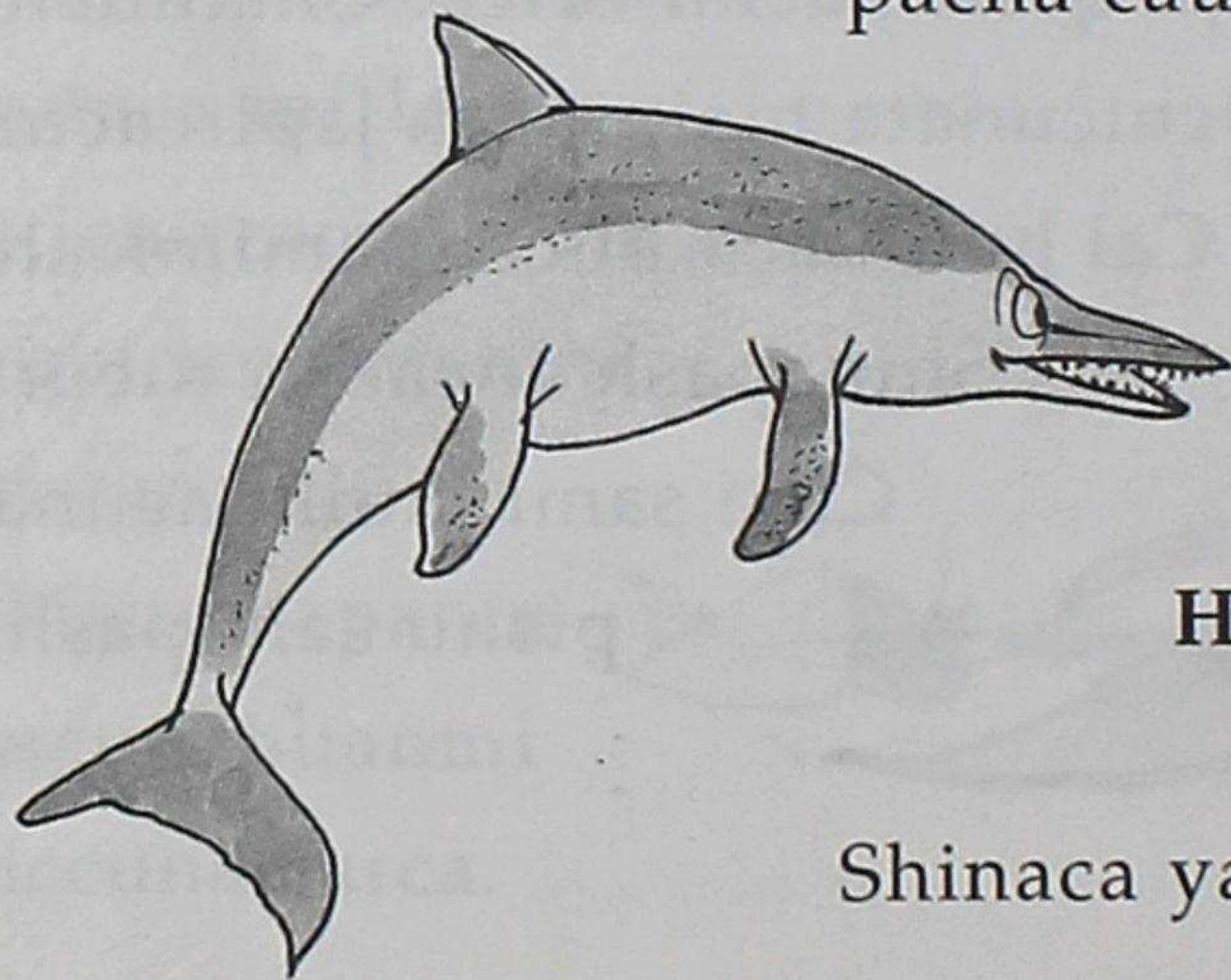


Shuctac yajarirucucunaca ancaccunami carca. Chaicunaca  
palamacucunata, aichahuacunata, uchilla huihuacuna-  
tami micurcacuna. Cai sami huihuacunaca suni  
cunca, ñaupi quiruyucmi carca. Chaihuanmi  
micuicunata maipipash japircacuna.  
Cai huihuaca llucac samimicarca.  
Shinapash ancacmi tucurca.  
Chai sami huihuacunaca  
pishu samipashmi  
tiyarca.



Uchilla, jatunmi carca.

Yajariruccunapac mitapica, llucac huihuacumi cururayarcacuna. Chaicunaca yacupimi causarcacuna. Huaquinca cunanapacha causacun **hucllu** shinami carca.



**Raprahuan** cuyushpami  
purircacuna.

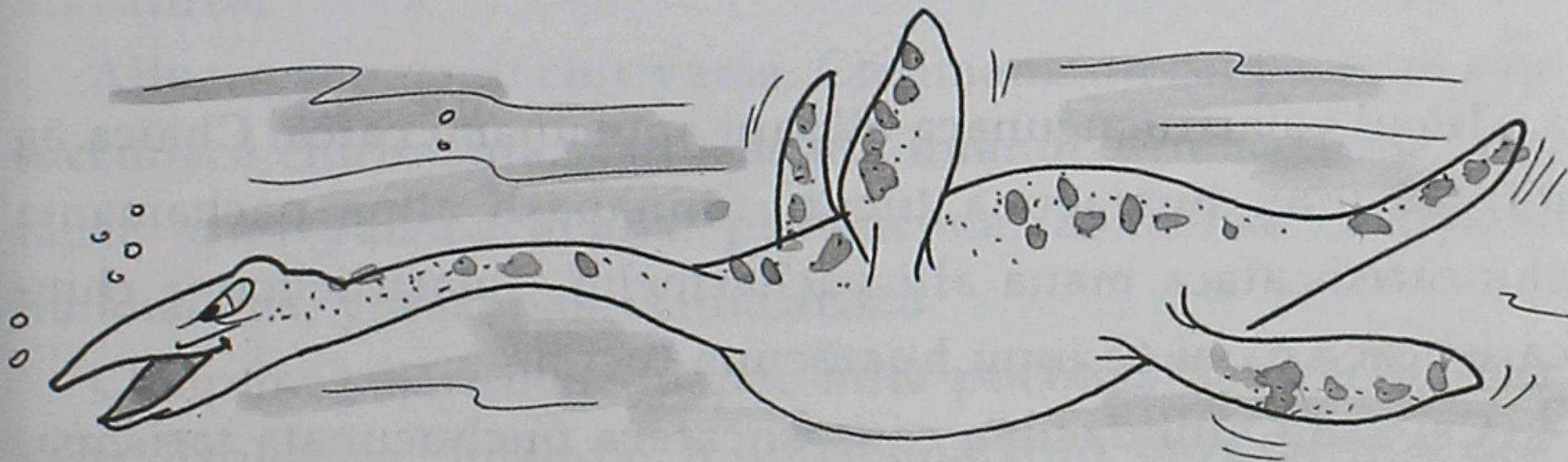
Suni umayuc, tauca  
quirucunayucmi carca.

**Huallinacuna** shina yacupimi  
luluncunata churarcacuna.

Shinaca yacullapitacmi mirarircacuna



Shuctac huihuacunaca suni cunca, uchilla uma, ñaupi illac  
quiruyucmi carcacuna. Aichahuacunata, yacupi tiyac uchilla  
huihuacunatami micushpa causarcacuna.



Tauca sami yajarirucucunami tiyarca. Allpapi purishpa, llucashpa,  
yacupi huan pushpa, huairapi ancashpami causarcacuna.

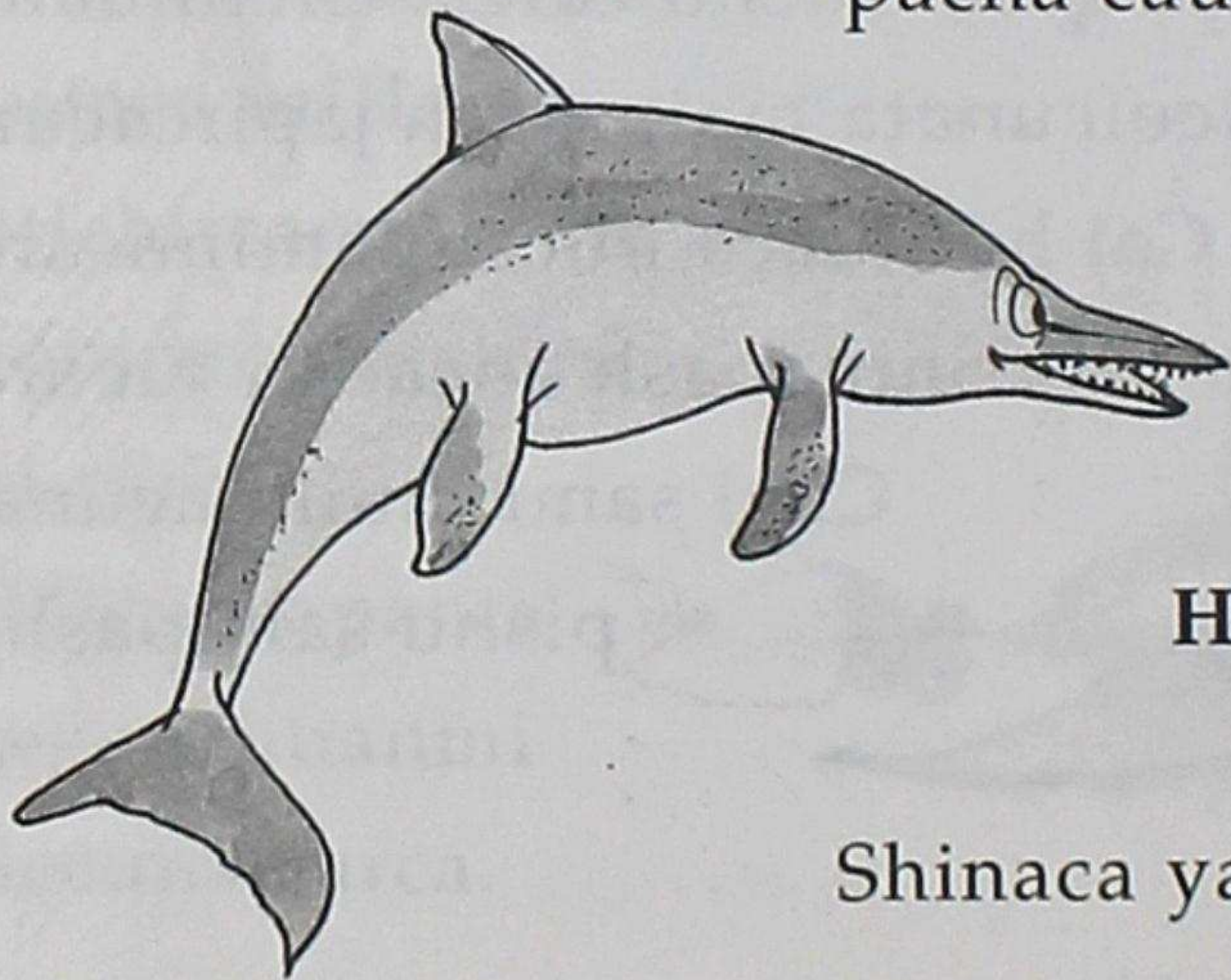
Yajariruccunapac mitapica, llucac huihuacumi cururayarcacuna. Chaicunaca yacupimi causarcacuna. Huaquinca cunan pacha causacun **hucllu** shinami carca.

**Raprahuan** cuyushpami purircacuna.

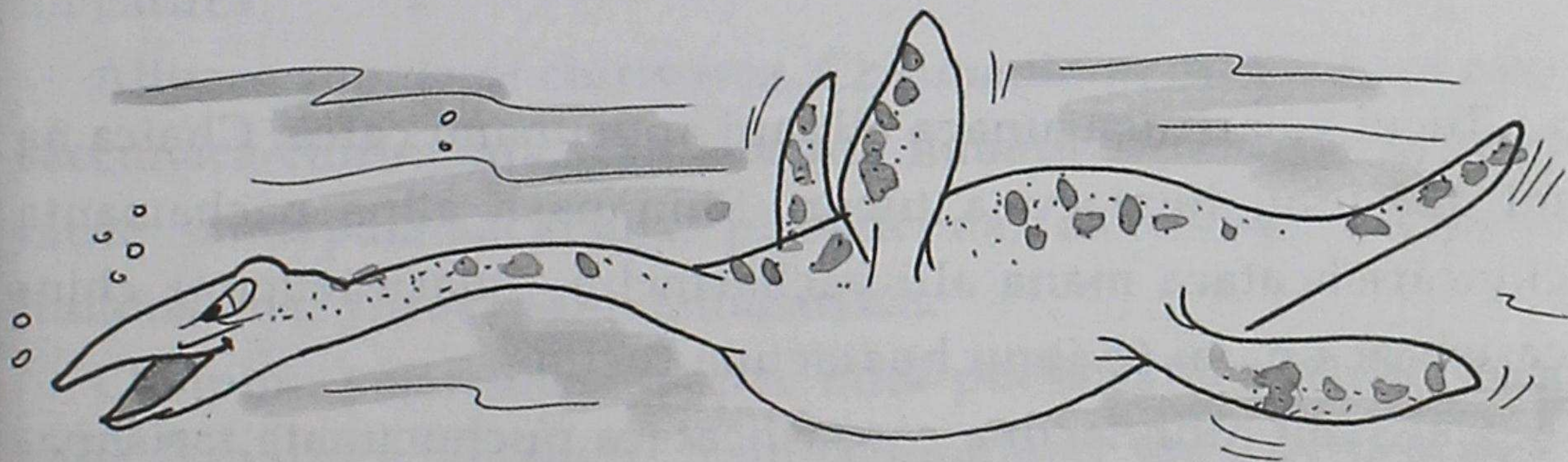
Suni umayuc, tauca quirucunayucmi carca.

**Huallinacuna** shina yacupimi luluncunata churarcacuna.

Shinaca yacullapitacmi mirarircacuna.



Shuctac huihuacunaca suni cunca, uchilla uma, ñaupi illac  
quiruyucmi carcacuna. Aichahuacunata, yacupi tiyac uchilla  
huihuacunatami micushpa causarcacuna.



Tauca sami yajarirucucunami tiyarca. Allpapi purishpa, llucashpa,  
yacupi huan pushpa, huairapi ancashpami causarcacuna.

## Yajarirucucuna chincari pacha

Tucui yajarirucucunaca allpapi apucunami carca. Chaica ñami 140 junu huatacuna tucun. Shinapash allpa pachamanta chincarishcataca mana alli yacharinchu. Yajarirucucuna chincarishcaca ñami 65 junu huatacuna tucun.

Cai sami huihuacuna causashcataca puchucunata tarishpami yachancuna. Puchucunataca tauca llactapimi taricuncuna.

Huaquin amautacunaca, allpa pachapi jatun rumi urmarca

nincunami. Chai rumi huatacpimi jatun jutcu tucurca. Chaipica yapa **jancan** jatarishpa allpa quillparca nin. Chaipimi inti chincarirca. Allpa pachapi causac huihuacunaca huacllirishpami catirca.

Allpaca yapatami chiriyarca. Chaimantami cai pachapi causaccunaca chirimanta, yarcaimanta huañurcacuna. Shinallatac tauca sami palamacucuna, pishcucuna, aichahuacuna, jatun huihuacuna, yuracunami chincarirca.

Chaipimi yajarirucucunapac mita puchucaí chayarca. Chai yapa llaquipica, huaquin huihuacunallami quishpirircacuna. Chai puchu huihuacunami causai callarircacuna nin.

Amautacunaca, punchantami puchucunata taricuncuna.  
Chai tarishcacunami huillaicunata mushuyachishpa caticun.

Amautai yachaicunaca llancaicunata manatac saquinchu. Ru  
nacunapac munaica taripashpa catinami can. Chasna munayuc  
runacunaca yachaisapacunami tucuncuna.

Cai huiñai causai huillacunata mana cuncancapacca, tauca  
runacunami camucunata quillcan. Shinapash, tauca shuyu  
cuyuric ricuchiccunata rurancuna.

## Yachaicuna

Cai pachapica, yajarirucucunapac causaita amautai yachaimi achcata munan. Cai yachaica tucui causayuccunapac callaritamimashcacun.

Tucui runa caccunamimaimanta shamushcata yachashunmunanchic. Tucui llactacunamipaicunapac causaiticsita ricsishunmunancuna. Maimantac yachac llactacunaca sinchi yuyayuccunamican. Huiñai causai huillai illac, llactacunaca chin-carishpamicatincuna.

Quichua llactacunapash maimanta shamushcata, picuna

cashcata, imata munashcata, maiman ricushcashta yachanami canchic. Chaipacmi, tucui quichuacuna ñucanchic causai callarita taripana canchic.

Ashtahuan yachaccuna canatami mutsunchic. Ashtahuan sin chi alli runacunami tucuna canchic.

Tucui quichua runacunami -cari, huarmi, huamra, huahua-cunami-, quiquin causaita allichina.

Ñucanchic causai ticsitaca mamacuna, taitacuna tapushpami yachashun. Sapan runacunami punchanta huiñai causaita ruranchic. Huiñai causaitaca mana shuctac yancata japinachu can. Huiñai causaica punchanta causashpa ima rurashcacunamimi can.



## Mushuc shimicuna

**aichahua:** pez  
**amauta:** científico  
**aunchi:** escama  
**carunu:** carbono  
**cusca:** sitio, lugar  
**chuchi:** pollo  
**huallina:** ballena  
**jancan:** polvareda  
**millajari:** tinarosaurio (millai +  
yajari)  
**mita:** época, era  
**osijinu:** oxígeno  
**palamacu:** insecto

**puchumi:** fósil (puchu + rumi)  
**quimiri:** relación  
**quimicu yacu:** caldo químico  
**rapra:** ala  
**sami:** clase, variedad, raza  
**sinchiyai:** energía  
**sucama:** cresta  
**taripai:** investigación  
**tijsan:** palmera  
**tiupi:** pico de aves  
**uclu:** bufeo, delfín  
**yajarirucu:** dinosaurio  
**yura huiqui:** resina

## Taripashca camucuna

- Roberts, J.M. "La prehistoria", Ed. Debate, S.A. Bogotá, 1991
- Cork, Bárbara. "El libro de la evolución", Ed. Lagos, Madrid, 1986
- Gayrard-Valy, Yvette. "Los fósiles, huellas de mundos desaparecidos, Aguilar Universal, Madrid, 1989